

# SCHOCK



**CONOS PRO**  
528006EDM/A



[www.schock.de/en/easy-conospro](http://www.schock.de/en/easy-conospro)





## PRODUKTMERKMALE

### PRODUCT SPECIFICATIONS



**Anschluss Schlauchlänge**  
Length of supply hoses



**Gewindegröße Anschluss Schlauch**  
Thread size of supply hose



**Schwenkbereich**  
Swivel range



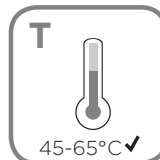
**Seitenbrause**  
Sidespray



**Anschluss Schlauchlänge Seitenbrause**  
Sidespray length of supply hoses



**Wasserdruck**  
Water pressure



**Temperatur**  
Temperature



**Wasserdurchlaufmenge**  
Water flow rate





**SCHOCK**

**SICHERHEITSHINWEISE**  
SAFETY NOTES

- DEU**    **DIE GEWÄHRLEISTUNG VERFÄLLT BEI LAIENMONTAGE.  
SCHOCK EMPFIEHLT DIE VERWENDUNG DES GROBPARTIKELFILTERS SF-100 (629883).  
KEINEN CHLORREINIGER VERWENDEN.**
- ENG**    **THE WARRANTY IS VOIDED BY NON-PROFESSIONAL INSTALLATION.  
SCHOCK RECOMMENDS THE USE OF THE SF-100 (629883) COARSE PARTICLE FILTER.  
DO NOT USE CHLORINE-BASED CLEANING AGENTS.**
- ES**    **LA GARANTÍA CADUCA CUANDO EL MONTAJE NO ES REALIZADO POR PERSONAL ESPECIALIZADO.  
SCHOCK RECOMIENDA LA INSTALACIÓN DEL FILTRO CONTRA PARTÍCULAS GRUESAS SF-100 (629883).  
SE ADVIERTE NO UTILIZAR DETERGENTES QUE CONTENGAN CLORO.**
- TR**    **YETKILI KİŞİLERCE YAPILMAYAN MONTAJLARDA GARANTI GEÇERSİZ SAYILACAKTIR.  
SCHOCK SF-100 (629883) KALIN PARÇACIK FİLTRESİNİ KULLANMANIZI ÖNERİR.  
ASLA KLORLU TEMİZLEYİCİLER KULLANMAYINIZ.**
- POL**    **GWARANCJA TRACI WAŻNOŚĆ W PRZYPADKU NIEWŁAŚCIWEGO MONTAŻU. SCHOCK ZALECA UŻYCIE  
ZAWORU KĄTOWEGO Z FILTREM SF-100 (629883). NIE STOSOWAĆ ŚRODKÓW NA BAZIE CHLORU.**
- RUS**    **ГАРАНТИЯ РАСПРОСТРАНЯЕТСЯ НА СМЕСИТЕЛИ УСТАНОВЛЕННЫЕ КВАЛИФИЦИРОВАННЫМ САНТЕХНИКОМ.  
SCHOCK РЕКОМЕНДУЕТ ИСПОЛЬЗОВАТЬ ФИЛЬТР ГРУБОЙ ОЧИСТКИ SF-100 (629883).  
НЕ ИСПОЛЬЗОВАТЬ ХЛОРСОДЕРЖАЮЩИЕ ЧИСТЯЩИЕ СРЕДСТВА.**



## WERKZEUGE TOOLS



19 mm  
23 mm  
36 mm

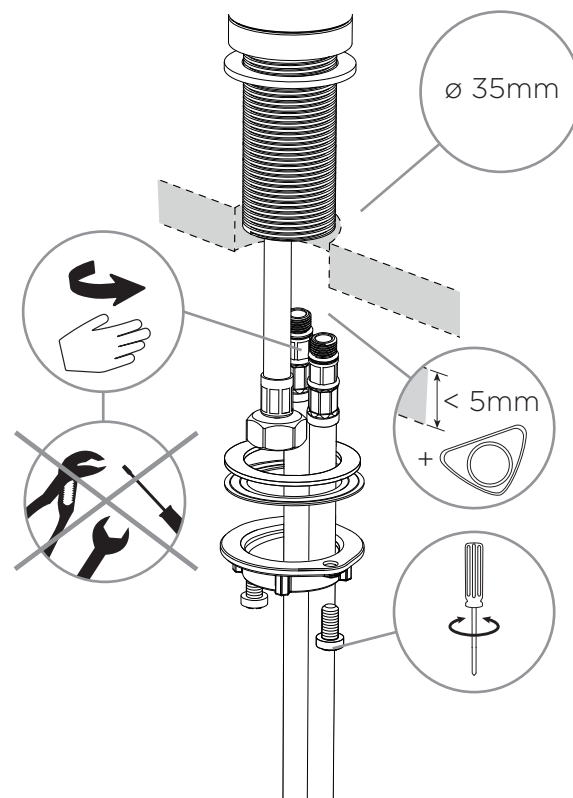


## INSTALLATION INSTALLATION

1

### Anschlusschläuche handfest anziehen

Hand - tighten supply hoses





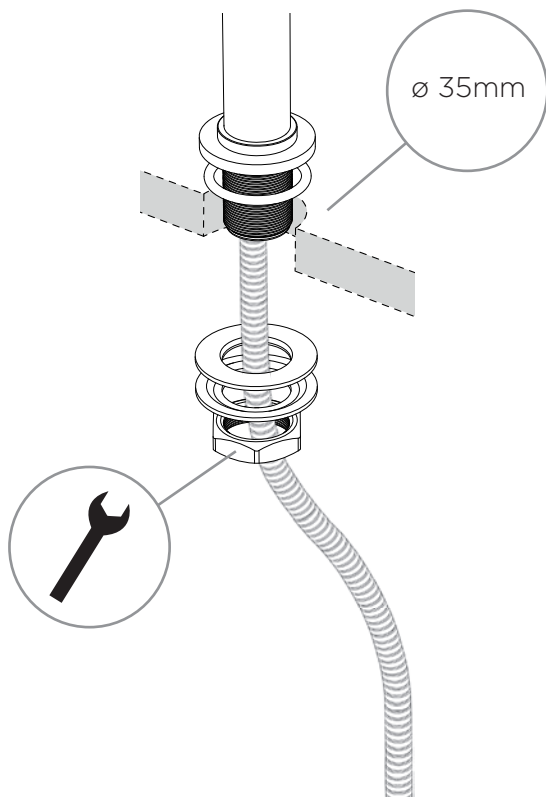
## INSTALLATION INSTALLATION

2



### **Anschlusschläuche handfest anziehen**

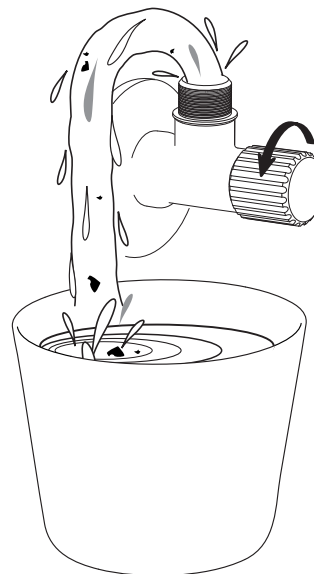
Hand - tighten supply hoses



3

### **Eckventile vor der Installation gründlich ausspülen**

Flush piping system before installation of fitting thoroughly



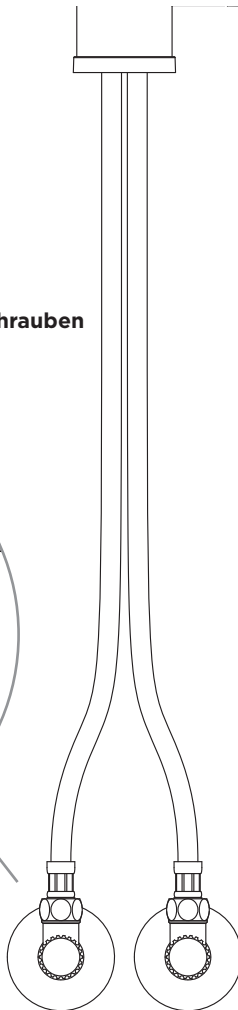
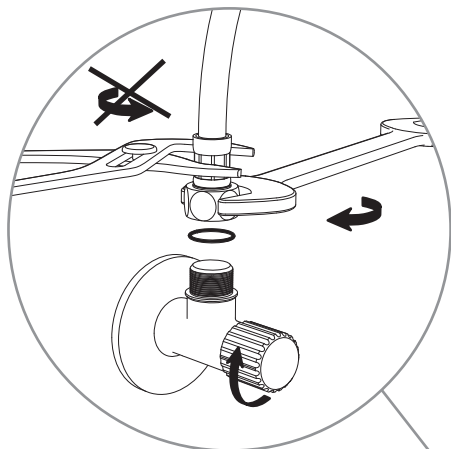


## INSTALLATION INSTALLATION

4

### Anschlusschläuche an Eckventile anschrauben

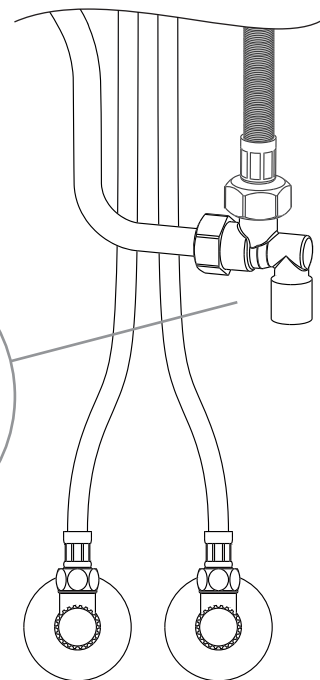
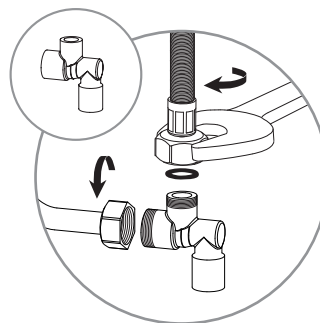
Screw supply hoses onto angle valves



5

### Fest anziehen

Tighten





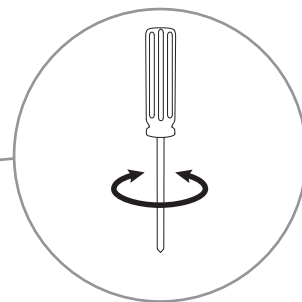
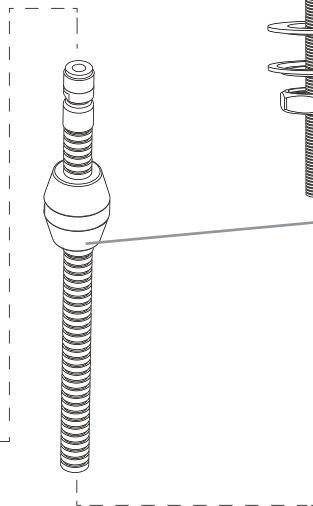
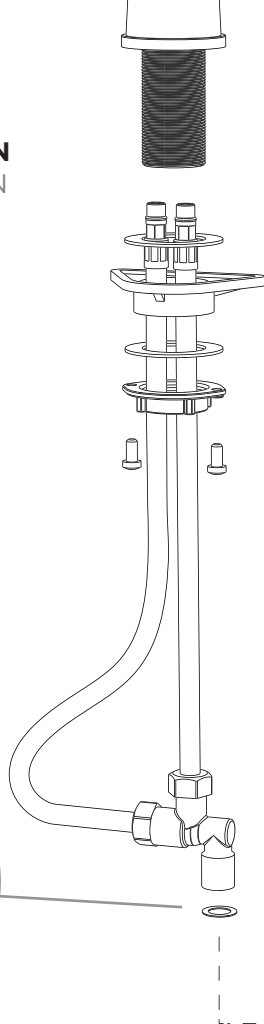
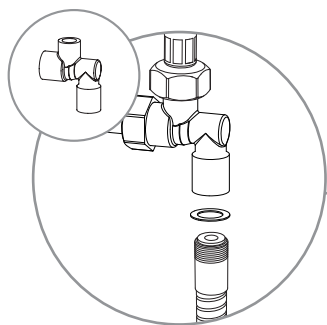
## INSTALLATION INSTALLATION

5



**Fest anziehen**

Tighten



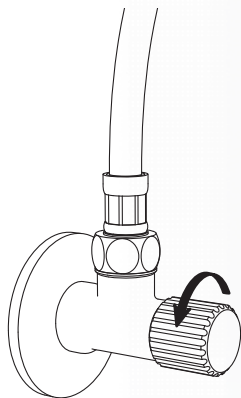


## INSTALLATION INSTALLATION

6

### Eckventile öffnen

Turn on water supplies and check connections for leaks









## WERKZEUGE TOOLS



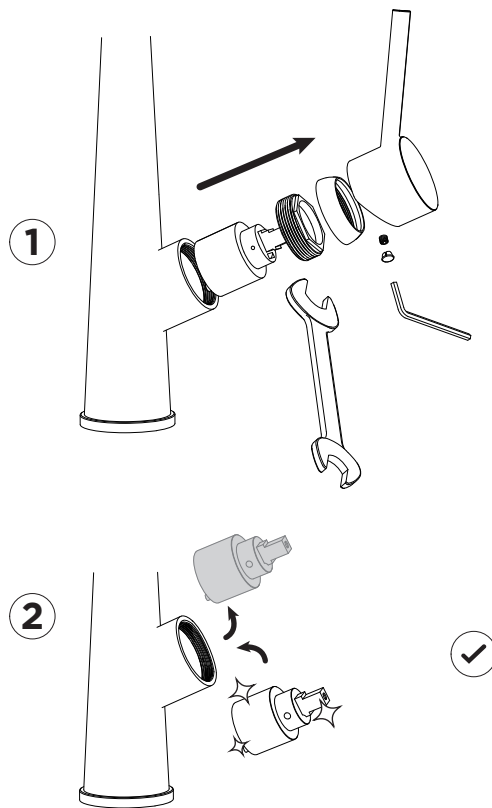
2,5 mm



30 mm



## KARTUSCHENWECHSEL CHANGING THE CARTRIDGE





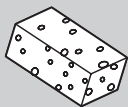
**WEBSHOP**



[WWW.SCHOCK.DE/SHOP](http://WWW.SCHOCK.DE/SHOP)

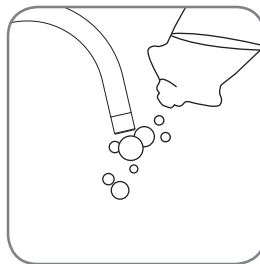


**PFLEGEPRODUKTE**  
CARE PRODUCTS

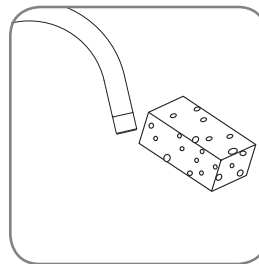


**PFLEGEHINWEISE**  
CARE INSTRUCTIONS

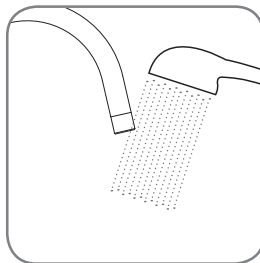
1.



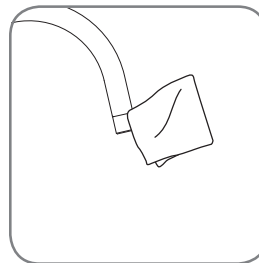
2.



3.



4.



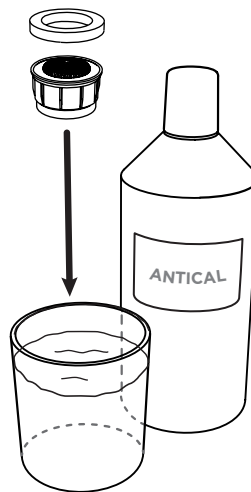
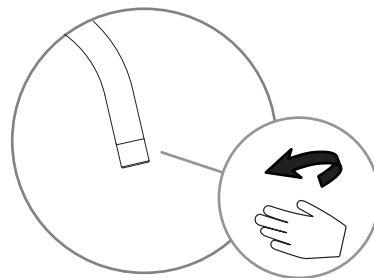


## WERKZEUGE TOOLS

Kein Werkzeug benötigt  
No tools needed



## PERLATORREINIGUNG CLEANING THE AERATOR



60 min



## ERSATZTEILE SPARE PARTS

1 628741/1

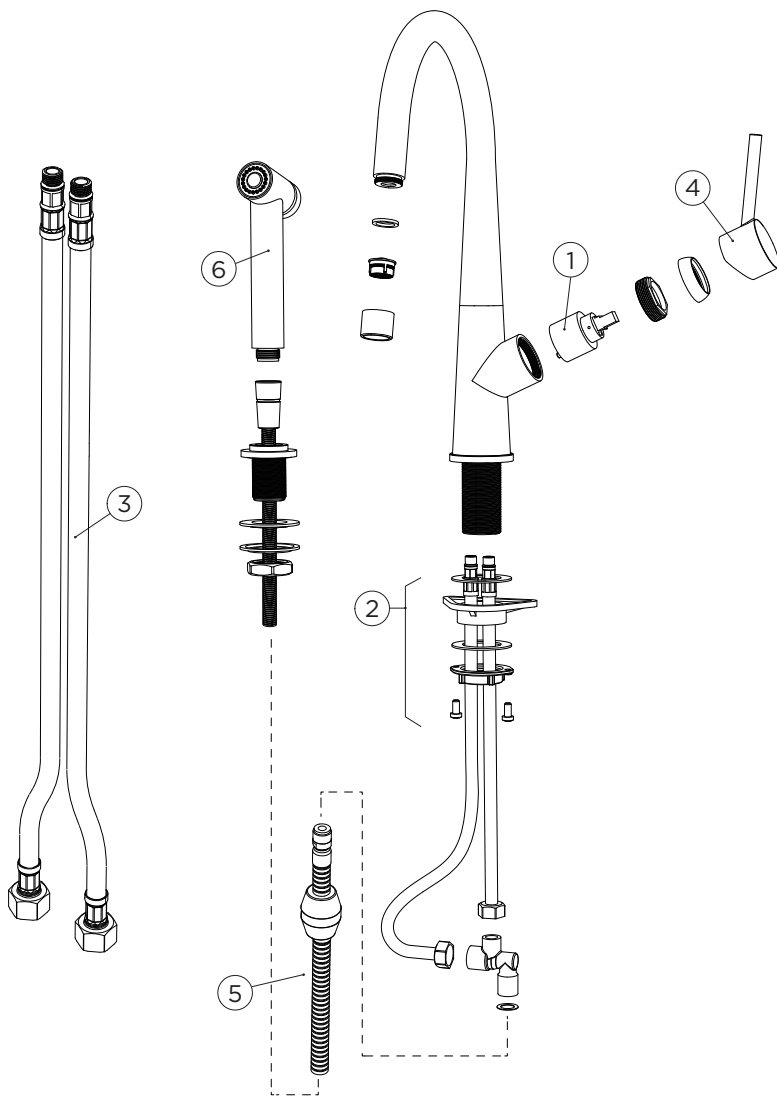
2 628740/2

3 628740/3

4 628783EDM

5 628740/5

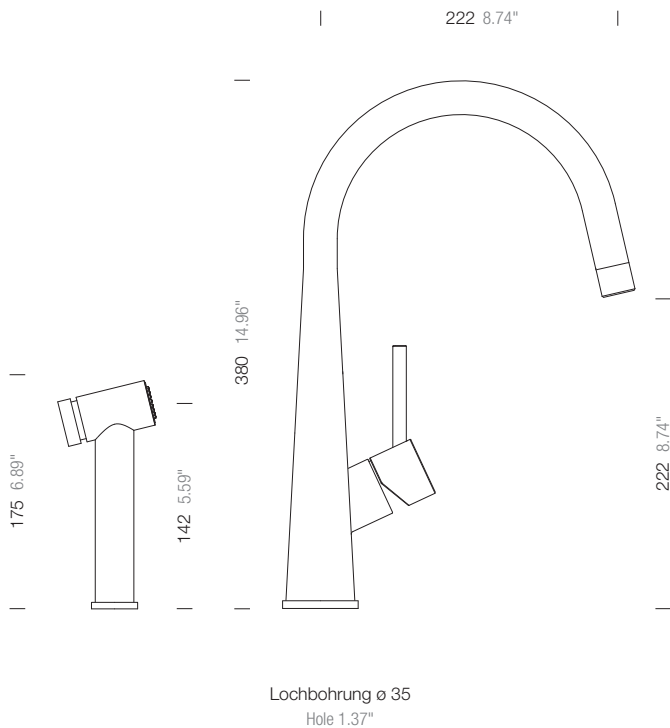
6 628740/3





**MASSE**  
MEASUREMENTS

## SCHOCK





[www.schock.de/en/service](http://www.schock.de/en/service)



[www.schock.de/en/shop](http://www.schock.de/en/shop)

SCHOCK GmbH • Hofbauerstr. 1 • D-94209 Regen  
Telefon: +49-9921-600-0 • Fax: +49-9921-600-253

Email: [info@schock.de](mailto:info@schock.de) • [www.schock.de](http://www.schock.de)