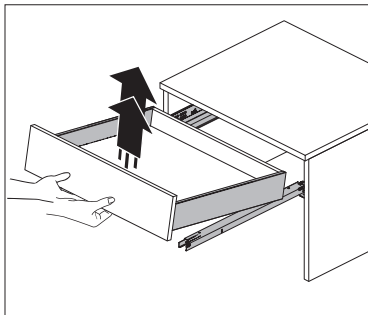
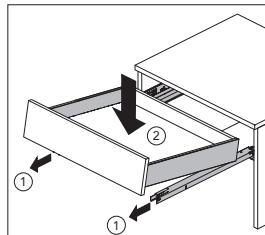


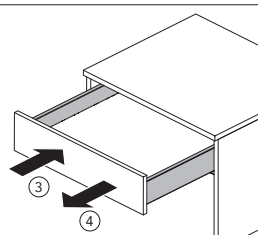
REMOVING DRAWER



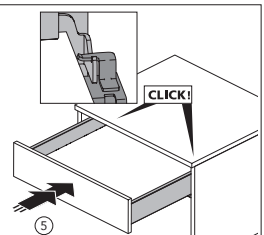
INSERTING DRAWER



1. Pull drawer runners out
2. Place drawer on runners

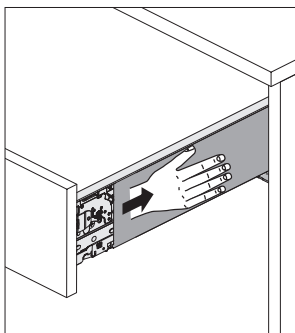


3. Push drawer in softly
4. Pull drawer back out

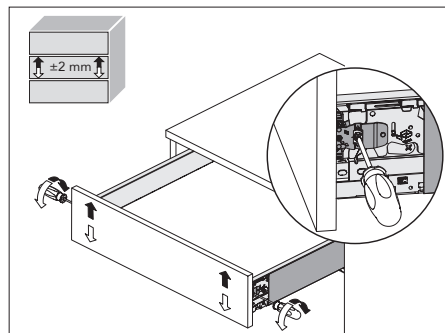


5. You will then need to apply a little force to push drawer in to connect to runners, listen for a click.

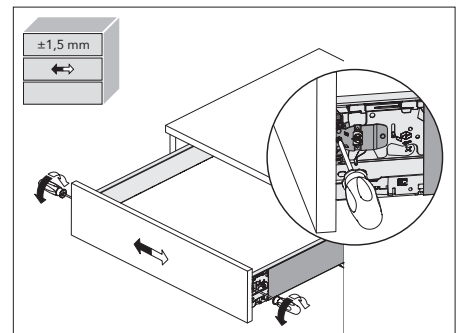
SLIDE DRAWER COVER



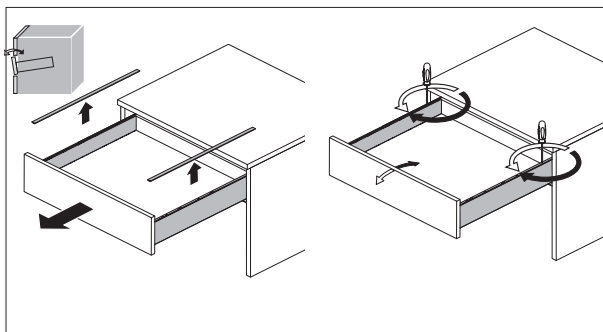
HEIGHT ADJUSTMENT



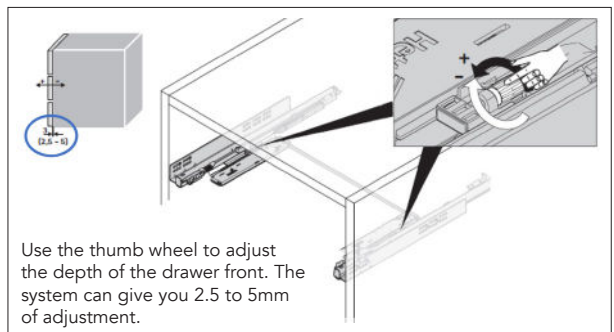
LATERAL ADJUSTMENT



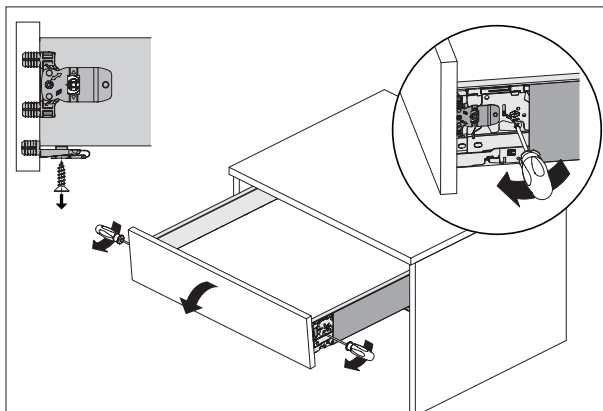
TILT ADJUSTMENT



DEPTH ADJUSTMENT (FOR PUSH-TO-OPEN ONLY)



DRAWER FRONT REMOVAL



DRAWER FRONT INSTALLATION

