

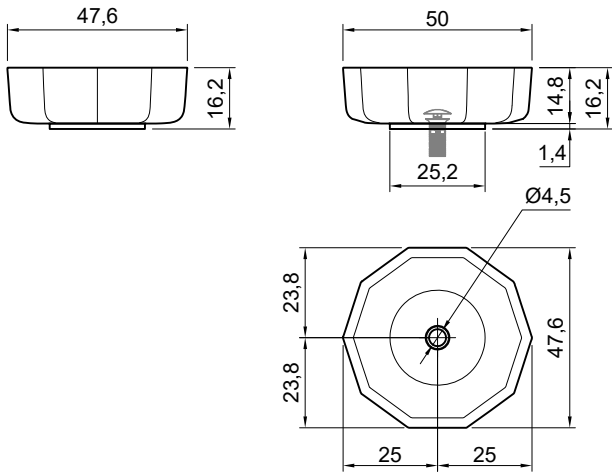
OPALE

Articolo: **OPALE10**  
Materiale: Cristalmood  
Troppopieno: NO  
Peso lordo: kg 8 ca.  
Peso netto: kg 7 ca.  
Dimensione imballo: cm 53 x 53 x 25,5

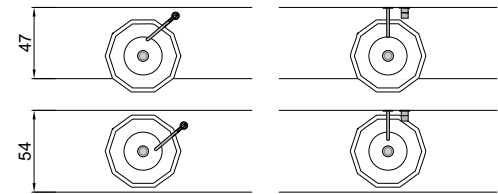
**Descrizione:** Lavabo decagonale in Cristalmood disponibile in diversi colori come da nostro campionario, sopraiano o abbinabile con colonna Art. OPALE20 o Art. OPALE21 completo di piletta con scarico libero e raccordo per sifone.

Article: **OPALE10**  
Material: Cristalmood  
Overflow: NO  
Gross weight: kg 8 ca.  
Net weight: kg 7 ca.  
Packing dimensions: cm 53 x 53 x 25,5

**Description:** Decagonal shape sink in Cristalmood available in various colors as per our color chart, to be used top mount or combined with base Art. OPALE20 or Art. OPALE21 complete with drain pipe fitting and open plug.



schema d' installazione lavabi e rubinetteria / sinks and taps installation layout



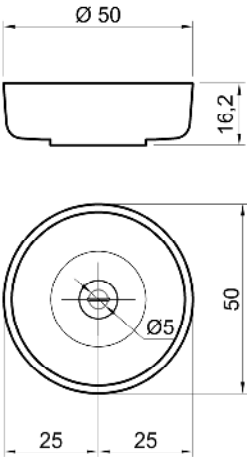
OPALE

Articolo: **OPALE11**  
Materiale: Marmo Carrara - Nero Marquinia - Calacatta Viola - Port Laurent - Emperador - Rosso Levanto - Verde Alpi - Pietra Stone Gray  
Troppopieno: NO  
Peso netto: kg 20 ca.

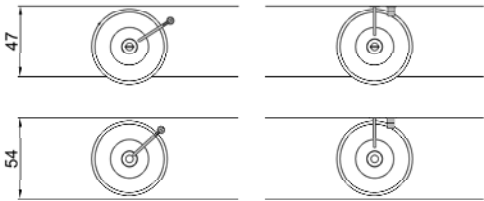
Descrizione: Lavabo tondo in pietra, soprapiano o abbinabile con colonna Art. OPALE20 o Art. OPALE21, completo di piletta con scarico libero e raccordo per sifone.

Article: **OPALE11**  
Material: Marble Carrara - Nero Marquinia - Calacatta Viola - Port Laurent - Emperador - Rosso Levanto - Verde Alpi - Pietra Stone Gray  
Overflow: NO  
Net weight: kg 20 ca.

Description: Round stone sink to be used top mount or with base Art. OPALE20 or Art. OPALE21 complete with drain pipe fitting and open plug.



schema d' installazione lavabi e rubinetteria / sinks and taps installation layout



## OPALE

**Articolo:** OPALE20  
**Materiale:** Cristalmood  
**Peso lordo:** kg 15,5 ca.  
**Peso netto:** kg 14 ca.

**Dimensione imballo:** cm 36 x 36 x 88

**Descrizione:** Colonna da terra in Cristalmood disponibile in diversi colori come da nostro campionario, con scarico a pavimento, sifone, tubo rigido o flessibile.

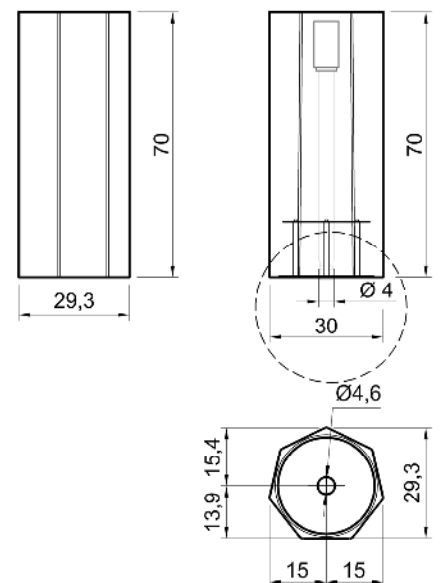
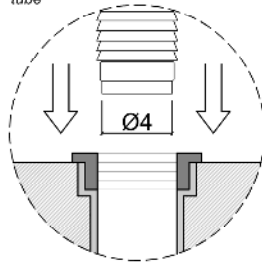
**Article:** OPALE20  
**Material:** Cristalmood  
**Gross weight:** kg 15,5 ca.  
**Net weight:** kg 14 ca.

**Packing dimensions:** cm 36 x 36 x 88

**Description:** Pedestal in Cristalmood in various colors as per our samples, with floor drainage, siphon, rigid or flexible hose.



Predisporre scarico a pavimento per tubo Ø4cm  
 Prepare the floor drain for a Ø4cm tube



## OPALE

**Articolo: OPALE21**

**Materiale:** Marmo Carrara - Nero Marquinia - Calacatta Viola - Port Laurent - Emperador - Rosso Levanto - Verde Alpi - Pietra Stone Gray

**Peso lordo:** kg 65,6 ca.

**Peso netto:** kg 60 ca.

**Dimensione imballo:** cm 33 x 33 x 70,5

**Descrizione:** Colonna da terra in pietra con scarico a pavimento, sifone e tubo flessibile.

**Article: OPALE21**

**Material:** Marble Carrara - Nero Marquinia - Calacatta Viola - Port Laurent - Emperador - Rosso Levanto - Verde Alpi - Pietra Stone Gray

**Gross weight:** kg 65,6 ca.

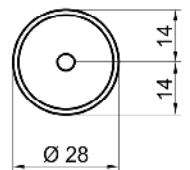
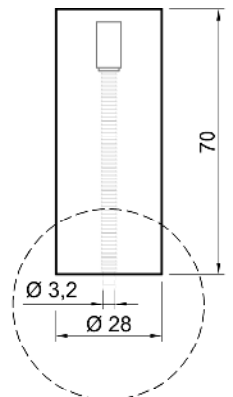
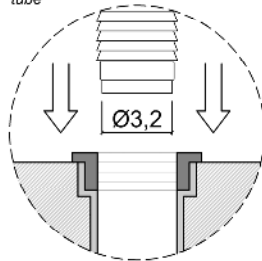
**Net weight:** kg 60 ca.

**Packing dimensions:** cm 33 x 33 x 70,5

**Description:** Pedestal in stone with floor drainage, siphon and flexible hose.



Predisporre scarico a pavimento per tubo Ø3,2cm  
Prepare the floor drain for a Ø3,2cm tube



**ATTENZIONE**

Si declina ogni responsabilità relativa ad eventuali inesattezze contenute in queste istruzioni dovute ad errori di trascrizione.

**WARNING**

We decline all responsibility and eventual inaccuracy contained in the instructions due to transcript errors.

**ATTENTION**

Nous ne nous retenons pas responsable des erreurs éventuelles contenu dans ces instructions dues à une mauvaise transcription.

**ACHTUNG**

Für eventuelle Fehler bei der Übersetzung der technischen Liste weißt Antonio Lupi Design S.p.A jegliche Verantwortung von sich.

**ATENCIÓN**

Declinamos cualquier responsabilidad por eventuales inexactitudes contenidas en estas instrucciones debidas a errores de transcripción.

**ВНИМАНИЕ**

Компания снимает с себя любую ответственность за возможные неточности, содержащиеся в данных инструкциях и возникшие при перепечатке материалов.

**antoniolupi**  
**73**  
VIA MAZZINI  
**75**

Antonio Lupi Design S.p.A.  
via Mazzini 73/75 - 50050 Stabbia  
Cerreto Guidi (Firenze) - Italy  
T +39 0571 586881\_95651  
[www.antoniolupi.it](http://www.antoniolupi.it)  
[lupi@antoniolupi.it](mailto:lupi@antoniolupi.it)