

## AXOR Showers/Front

### Overhead shower 240 2jet with shower arm

Surfaces: **Chrome** Article Number: **26021000**

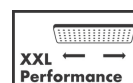


## Description

### product features

- shower head size: 279 mm
- shower arm length: 400 mm
- shower arm swivels by 150°
- overhead shower angle adjustable
- spray type: Rain, RainAir
- flow rate Rain spray (at 0.3 MPa): 15 l/min
- flow rate RainAir spray (at 0.3 MPa): 15 l/min
- Select button on overhead shower
- fully chrome-plated spray disc
- material spray disc: metal
- spray disc removable for cleaning
- installation: wall
- connection thread G ½
- connection dimension: DN15
- suitable for continuous flow water heaters with an output of 18 kW

## Technology



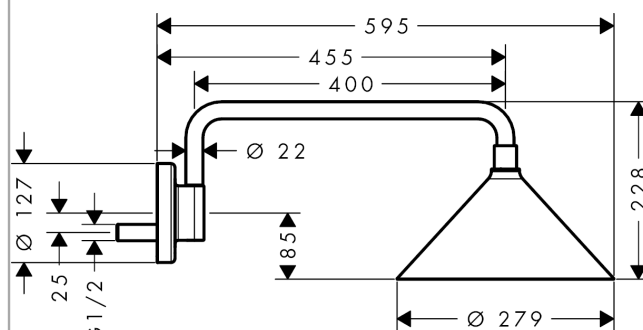
## Design awards



## Product image



## Scale drawing



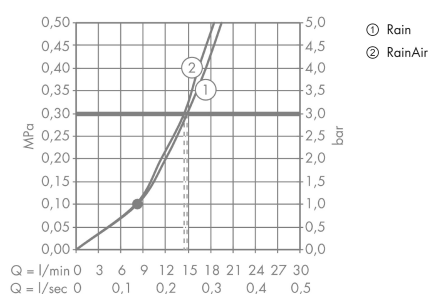
## AXOR Showers/Front

### Overhead shower 240 2jet with shower arm

Surfaces: **Chrome** Article Number: **26021000**



## Flowchart



The consumption was measured in combination with the appropriate fittings (thermostat/mixer/in-wall valve) to reflect actual application in practice.

## AXOR Showers/Front

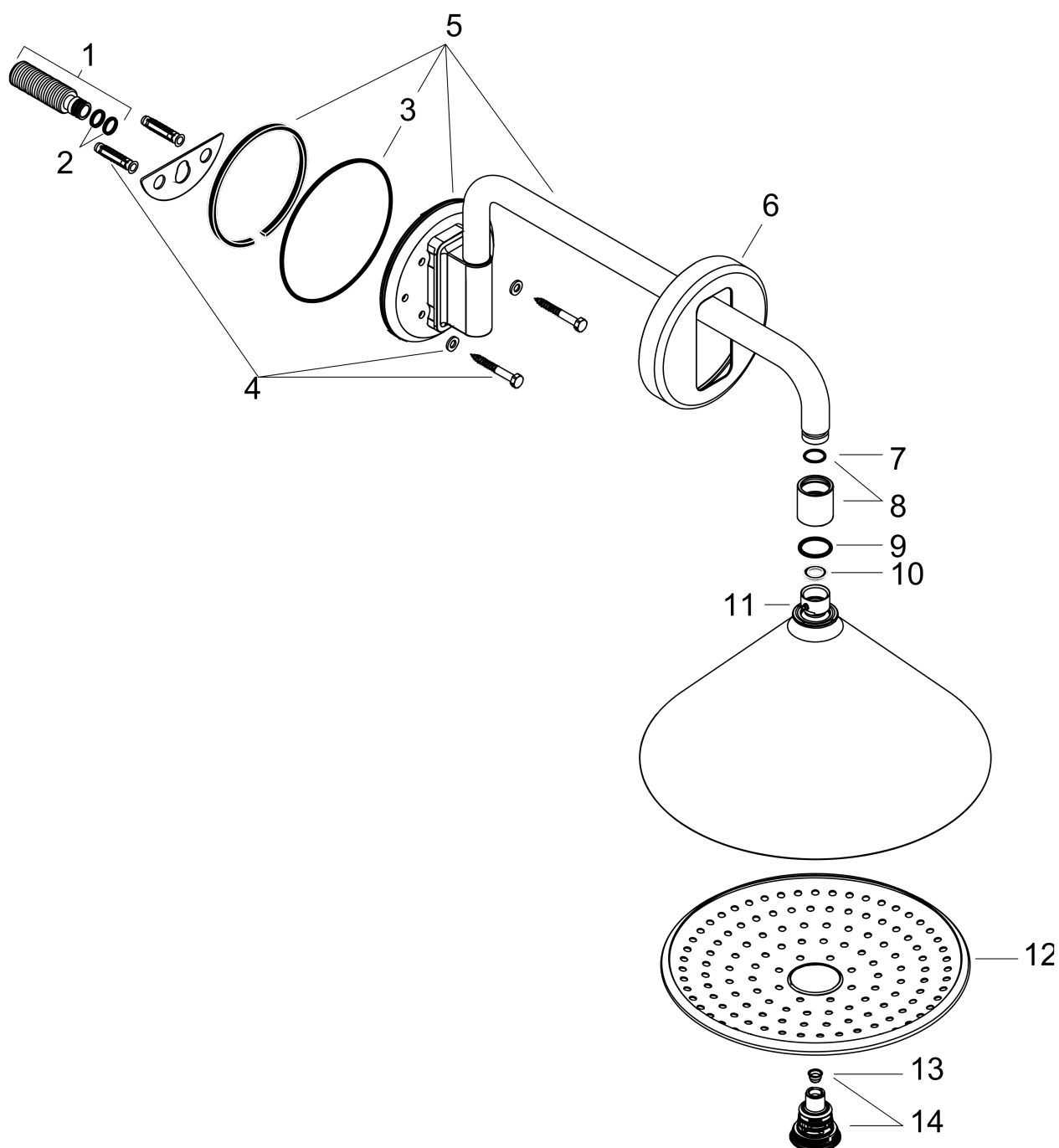
### Overhead shower 240 2jet with shower arm

Surfaces: **Chrome** Article Number: **26021000**



## Exploded Drawing

Year of production: >09/13



**AXOR Showers/Front**  
**Overhead shower 240 2jet with shower arm**  
 Surfaces: **Chrome**    Article Number: **26021000**



## Spare part list

Year of production: >09/13

Pos.	Description	Article Number	PC	PU
1	connecting thread G½	92195000	0	1
2	O-ring 11x2	98127000	0	1
3	O-ring 100x2,5	98417000	0	1
4	mounting kit	95430000	0	1
5	shower arm	92194000	0	1
6	escutcheon	92193000	0	1
7	O-Ring 21x3	98182000	0	1
8	deco-ring	92203000	0	1
9	O-ring 27x3	92503000	0	1
10	seal	98058000	0	1
11	hollow set screw M4x6	97767000	0	1
12	spray body	92192000	0	1
13	filter	97735000	0	1
14	selector assy	92387000	0	1
a	shower arm cpl.	92318000	0	1
b	base body	26909180	0	1