

AXOR Citterio

Single lever shower mixer for concealed installation with lever handle

Surfaces: **Chrome** Article Number: **39655000**

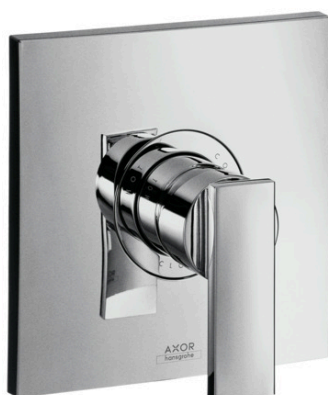


Description

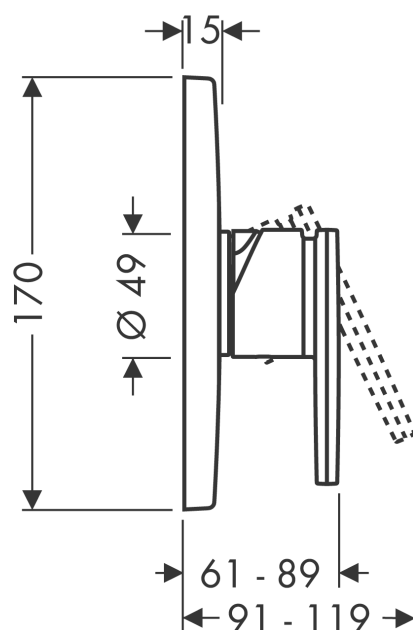
product features

- 1 outlet
- connection type: basic set
- ceramic cartridge
- min. operating pressure: 1 bar
- max. operating pressure: 10 bar
- temperature limitation adjustable
- with silencer
- suitable for continuous flow water heaters
- SVGW 0411-4903
- DVGW NW-6506CQ0125
- PA-IX 9710/IB
- ETA VA 1.42/18751
- ACS 19 ACC LY 233, valide jusqu'au 09.12.2023
- JWWA E-382
- Kiwa K6161_Mechanical Mixers EN817
- SINTEF 1426
- STA 1392

Product image



Scale drawing



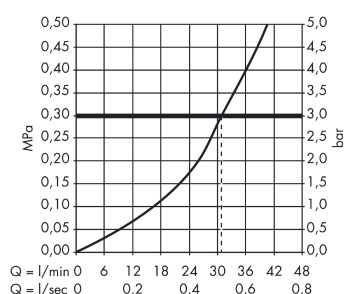
AXOR Citterio

Single lever shower mixer for concealed installation with lever handle

Surfaces: **Chrome** Article Number: **39655000**



Flowchart

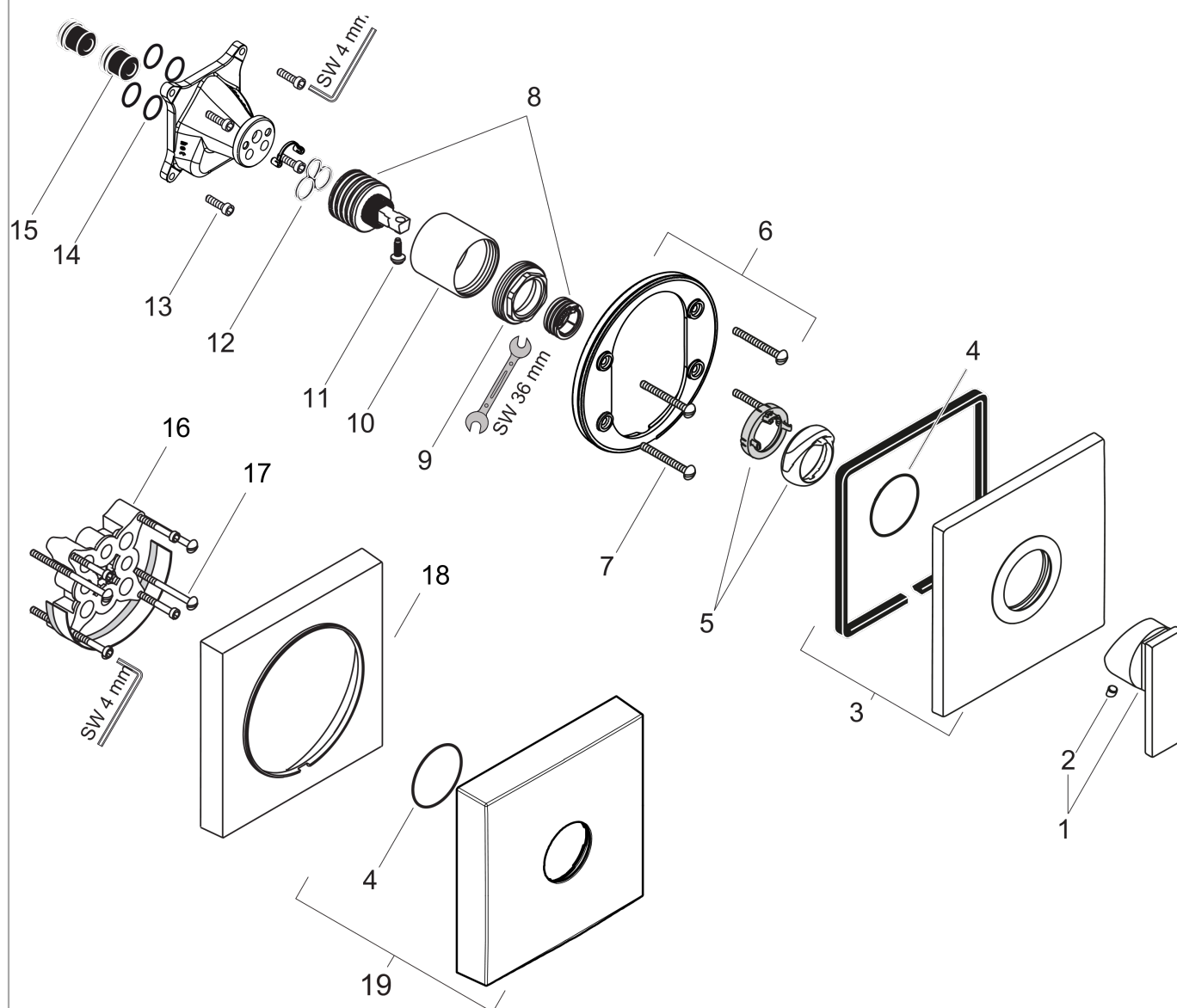


AXOR Citterio
Single lever shower mixer for concealed installation with lever handle
 Surfaces: **Chrome** Article Number: **39655000**



Exploded Drawing

Year of production: >05/12



AXOR Citterio
Single lever shower mixer for concealed installation with lever handle
 Surfaces: **Chrome** Article Number: **39655000**



Spare part list

Year of production: >05/12

Pos.	Description	Article Number	PC	PU
1	handle	39491000	0	1
2	screw cover	96338000	0	1
3	escutcheon 170 / 170 mm	96749000	0	1
4	O-ring 48x5	98174000	0	1
5	flange (Rotating Protector)	96395000	0	1
6	holder for escutcheon	98793000	0	1
7	set of fixing screws	96454000	0	1
8	cartridge, assy	92730000	0	1
9	nut	96461000	0	1
10	sleeve	95980000	0	1
11	locking screw for handle	96059000	0	1
12	seal	95008000	0	1
13	set of screws	96525000	0	1
14	O-ring 16x2	98133000	0	1
15	noise reduction	94073000	0	1
16	extension 25 mm	13595000	0	1
17	set of fixing screws	97747000	0	1
18	extension 22 mm	97407000	0	1
19	escutcheon height = 33 mm (when wall is not deep enough).	14965000	0	1
a	concealed item	01800180	0	1
b	adapter for exchanged connections	93181000	0	1