

**AXOR Citterio**  
**Single lever bath mixer for concealed installation**  
 Surfaces: **Chrome** Article Number: **39455000**



## Description

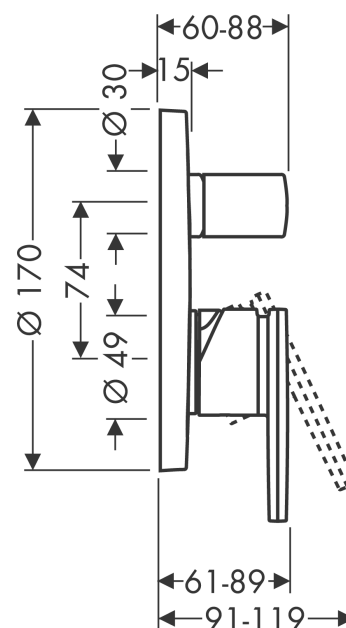
### product features

- connection type: basic set
- ceramic cartridge
- min. operating pressure: 1 bar
- max. operating pressure: 10 bar
- temperature limitation adjustable
- with automatic resetting
- with silencer
- suitable for continuous flow water heaters

## Product image



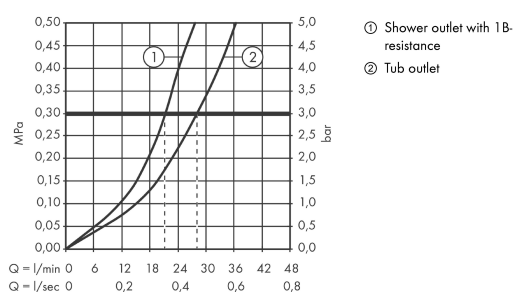
## Scale drawing



**AXOR Citterio**  
**Single lever bath mixer for concealed installation**  
 Surfaces: **Chrome**    Article Number: **39455000**



## Flowchart

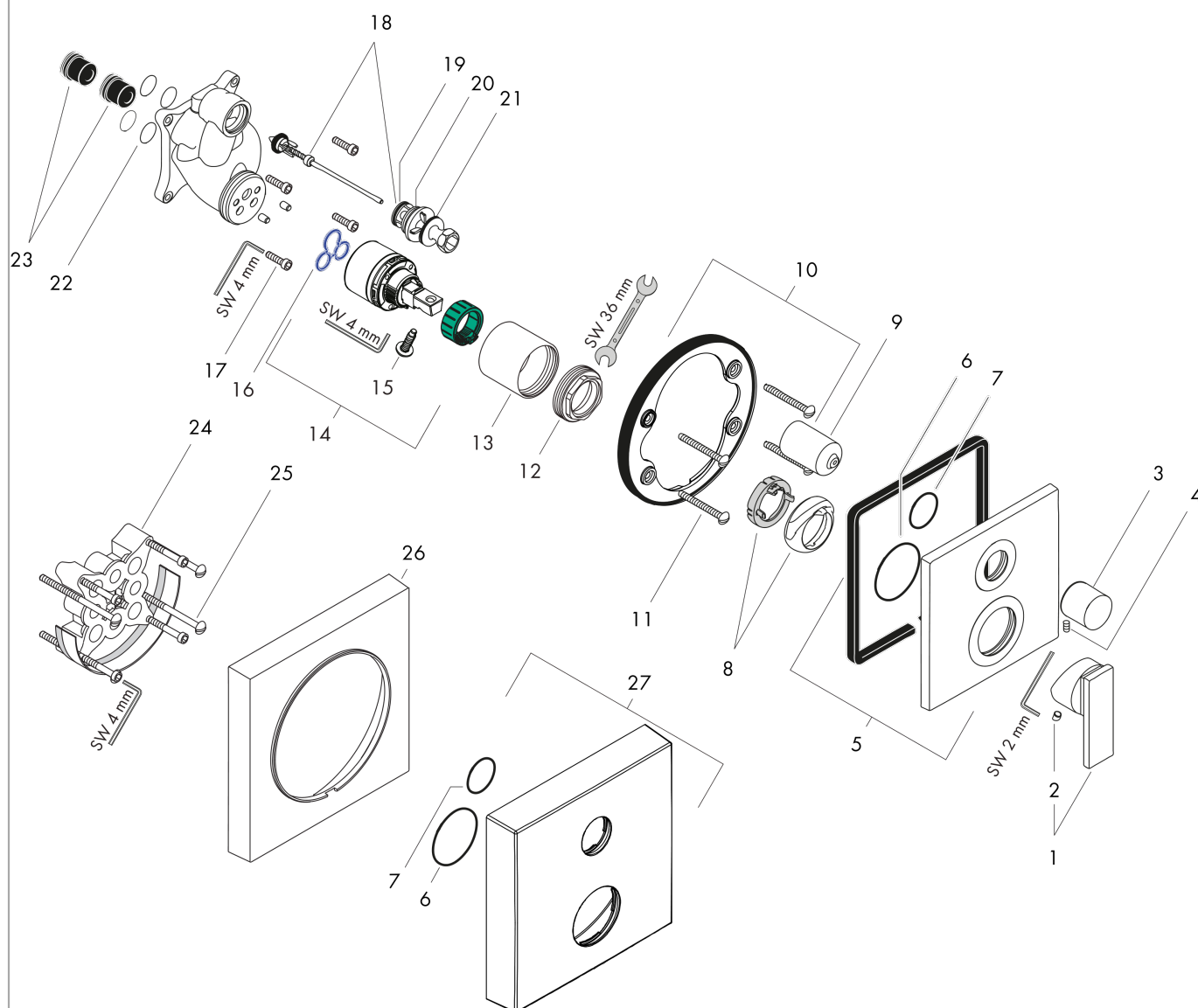


**AXOR Citterio**  
**Single lever bath mixer for concealed installation**  
 Surfaces: **Chrome**    Article Number: **39455000**



## Exploded Drawing

Year of production: >01/16



**AXOR Citterio**  
**Single lever bath mixer for concealed installation**  
Surfaces: **Chrome**    Article Number: **39455000**



## Spare part list

Year of production: >01/16

| Pos. | Description   | Article Number | PC | PU |
|------|---|----------------|----|----|
| 1    | handle  | 39491000       | 0  | 1  |
| 2    | screw cover   | 96338000       | 0  | 1  |
| 3    | diverter knob   | 96473000       | 0  | 1  |
| 4    | hollow set screw M4x10                                    | 97667000       | 0  | 1  |
| 5    | escutcheon  | 96751000       | 0  | 1  |
| 6    | O-Ring 48x3   | 95508000       | 0  | 1  |
| 7    | O-ring 29x3   | 98371000       | 0  | 1  |
| 8    | flange (Rotating Protector)                               | 96395000       | 0  | 1  |
| 9    | sleeve  | 96448000       | 0  | 1  |
| 10   | holder for escutcheon                                     | 98793000       | 0  | 1  |
| 11   | set of fixing screws                                      | 97747000       | 0  | 1  |
| 12   | nut   | 96461000       | 0  | 1  |
| 13   | sleeve  | 95980000       | 0  | 1  |
| 14   | cartridge, assy   | 92730000       | 0  | 1  |
| 15   | locking screw for handle                                  | 95140000       | 0  | 1  |
| 16   | seal  | 95008000       | 0  | 1  |
| 17   | set of screws   | 96525000       | 0  | 1  |
| 18   | selector assy   | 95014000       | 0  | 1  |
| 19   | O-ring 16x2,3   | 98207000       | 0  | 1  |
| 20   | O-ring 20x2,5   | 92602000       | 0  | 1  |
| 21   | O-ring 21x2   | 98205000       | 0  | 1  |
| 22   | O-ring 16x2   | 98133000       | 0  | 1  |
| 23   | noise reduction   | 94073000       | 0  | 1  |
| 24   | extension 25 mm   | 13595000       | 0  | 1  |
| 25   | set of fixing screws                                      | 96454000       | 0  | 1  |
| 26   | extension 22 mm   | 97407000       | 0  | 1  |
| 27   | escutcheon height = 33 mm (when wall is not deep enough). | 14967000       | 0  | 1  |
| a    | concealed item  | 01800180       | 0  | 1  |
| b    | fixation set  | 96615000       | 0  | 1  |
| c    | spring for exchanged connections                          | 96365000       | 0  | 1  |