

AXOR LampShower/Nendo
LampShower 275 1jet with ceiling connector
 Surfaces: **Chrome** Article Number: **26032000**



Description

product features

- shower head size: 275 mm
- ball-joint: overhead shower angle adjustable
- spray type: Rain
- flow rate Rain spray (at 0.3 MPa): 18 l/min
- spray zones: special spray image from placed inside spray nozzles on the inner diameter
- material spray disc: metal
- spray disc removable for cleaning
- brass ceiling connector
- ceiling connection length: 265 mm
- installation: ceiling
- connection thread G ½
- connection dimension: DN15
- with integrated lighting
- illuminant: LED
- power supply: 12 V
- transformer power supply for concealed installation 12 V, 18 W
- input voltage: 100 - 240 V AC / 50 / 60 Hz
- output voltage: 12 V - DC
- colour temperature: 2700 K
- energy efficiency label: A+
- TÜV certified
- TÜV B 14 04 14237 078
- TÜV B 14 04 14237 078
- TÜV B 14 04 14237 078
- ACS 19 ACC LY 042, valide jusqu'au 20.05.2024

Technology



Design awards



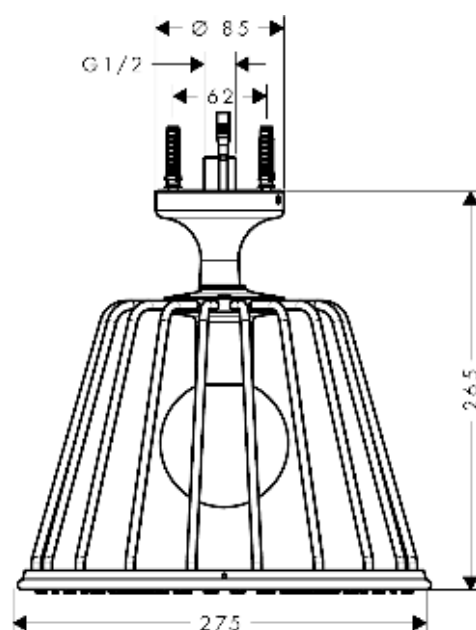
AXOR LampShower/Nendo
LampShower 275 1jet with ceiling connector
 Surfaces: **Chrome** Article Number: **26032000**



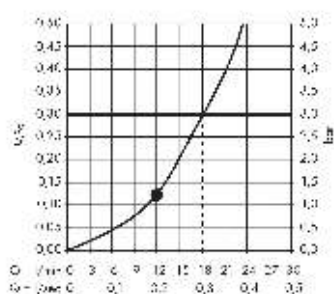
Product image



Scale drawing



Flowchart



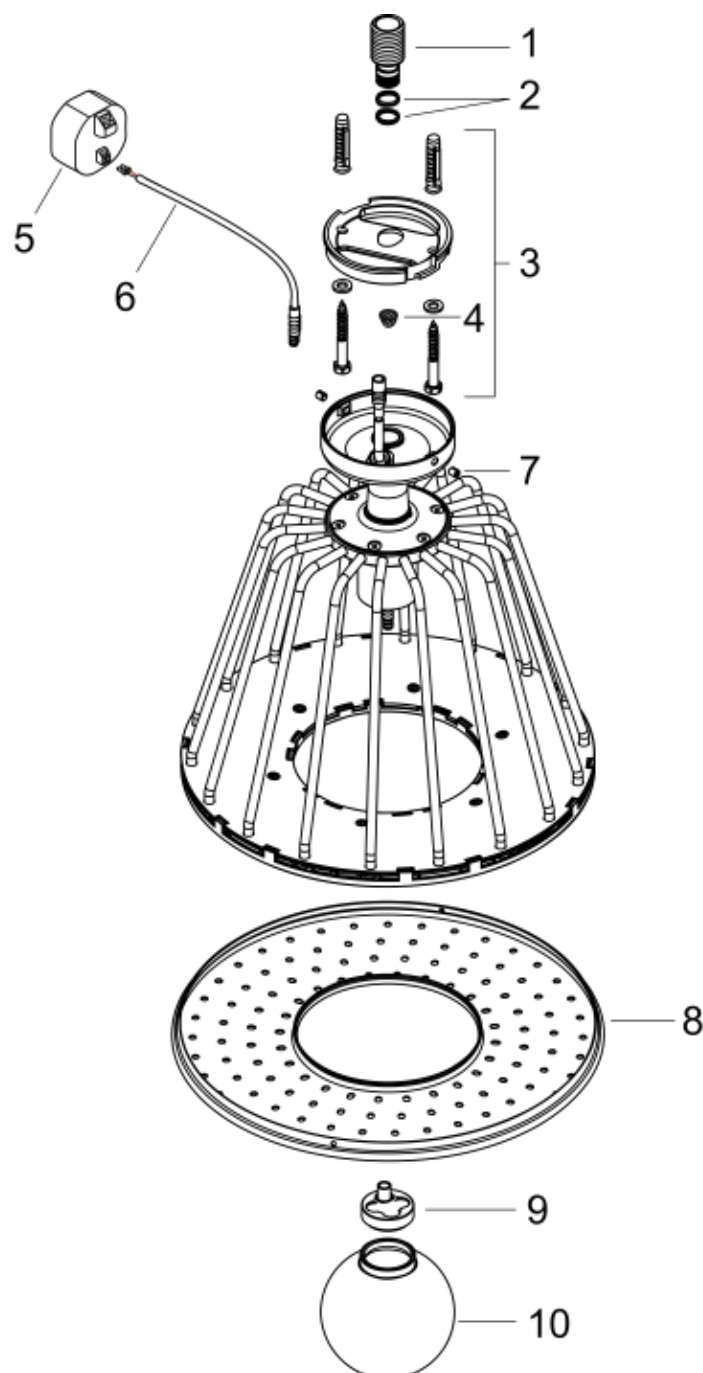
The flow curve was measured in combination with the representative 1/2" copper thermoball valve. It will vary to reflect actual application in practice.

AXOR LampShower/Nendo
LampShower 275 1jet with ceiling connector
 Surfaces: **Chrome** Article Number: **26032000**



Exploded Drawing

Year of production: >11/13



AXOR LampShower/Nendo
LampShower 275 1jet with ceiling connector
 Surfaces: **Chrome** Article Number: **26032000**



Spare part list

Year of production: >11/13

Pos.	Description	Article Number	PC	PU
1	connecting thread G½	92179000	0	1
2	O-ring 11x2	98127000	0	1
3	mounting kit	92180000	0	1
4	filter	97735000	0	1
5	transformer	95585000	0	1
6	cable for illumination (12 V)	95586000	0	1
7	hollow set screw M5x6	98482000	0	1
8	spray body	92181000	0	1
9	bulb	98351000	0	1
10	light glass	92182000	0	1