

**AXOR Montreux**  
**Shower set 0.90 m with hand shower 100 1jet**  
 Finish: **Chrome**    Article Number: **27982000**



## product features

- consists of: hand shower, shower bar, shower hose, slider
- shower head size: 100 mm
- spray type: RainAir
- support for shower hose with conical nuts
- AXOR Montreux wall bar 0.90 m
- maximum flow rate at 3 bar: 16 l/min
- minimum flow pressure: 1 bar
- operating pressure: min. 1 bar/max. 6 bar
- wall mounting: screw fastening
- wall supports of metal
- profile pipe: round
- shower bar diameter: 25 mm
- drilling distance: 915 mm

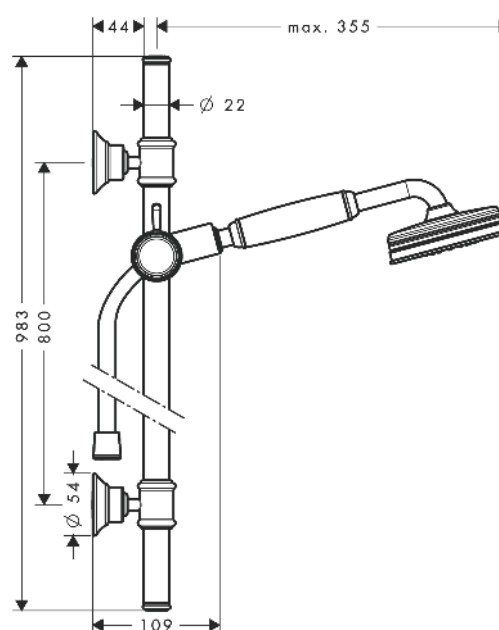
## Technology



## Product image



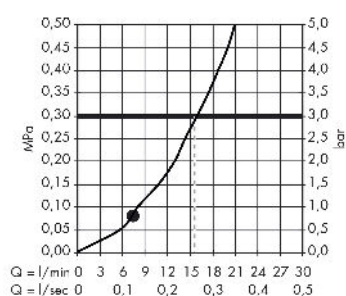
## Scale drawing



**AXOR Montreux**  
**Shower set 0.90 m with hand shower 100 1jet**  
 Finish: **Chrome**    Article Number: **27982000**



## Flowchart



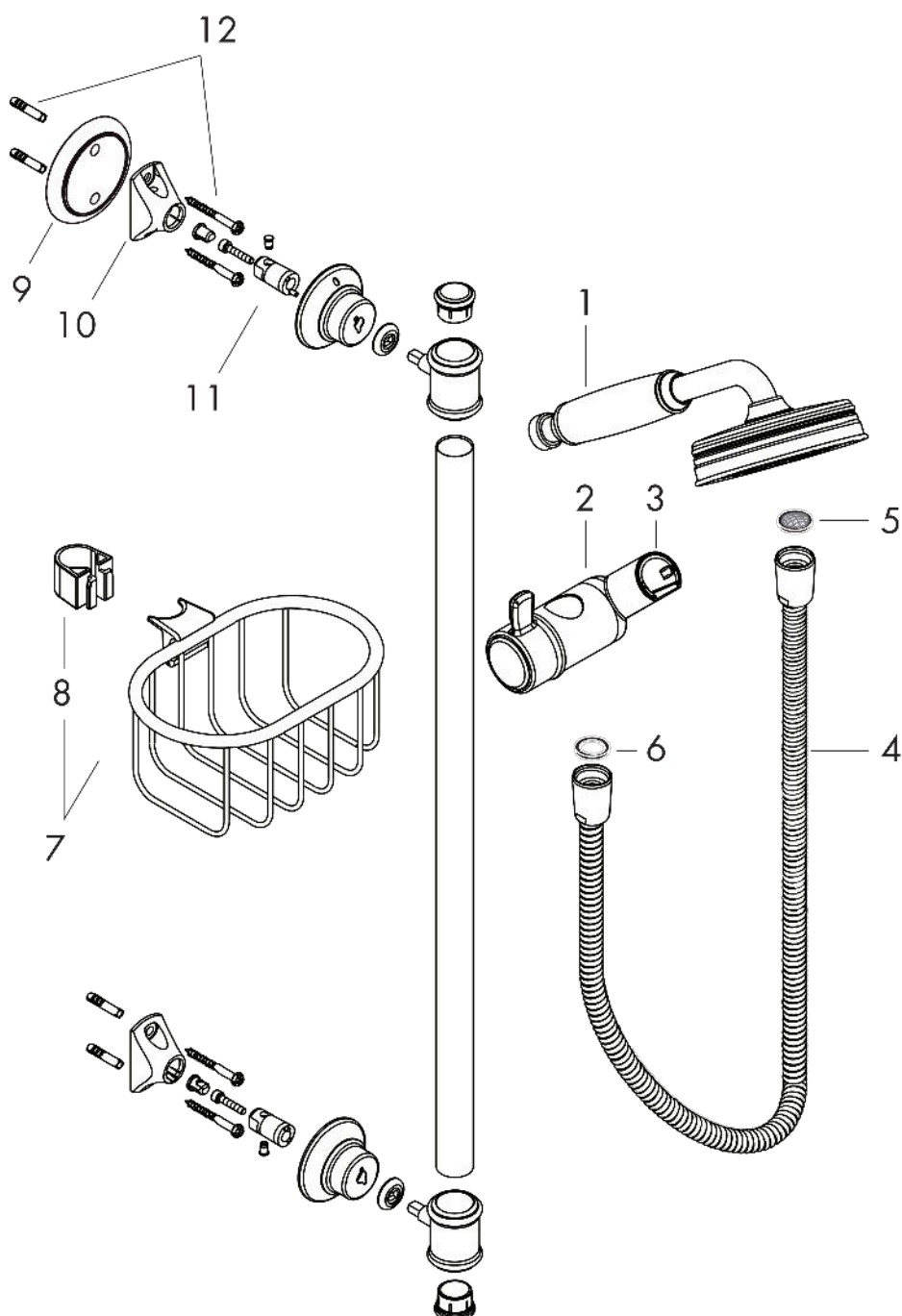
The consumption was measured in combination with the appropriate fittings (thermostatic mixer / in-wall valve) to reflect actual application in practice.

**AXOR Montreux**  
**Shower set 0.90 m with hand shower 100 1jet**  
 Finish: **Chrome**    Article Number: **27982000**



## Exploded Drawing

Year of production: >04/06



**AXOR Montreux**  
**Shower set 0.90 m with hand shower 100 1jet**  
 Finish: **Chrome**    Article Number: **27982000**



## Spare part list

Year of production: >04/06

Pos.		Article Number	PC	PU
1	handshower	16320000	99	1
2	support, assy	98723000	12	1
3	guide	98918000	1	1
4	shower hose 1,60 m	28116000	99	1
5	filter packing	94246000	1	1
6	seal	98058000	1	1
7	soap recess	42066000	99	1
8	clip for Casetta, Ø 22 mm	96189000	2	1
9	tile-matching-disk 7 mm	95538000	5	1
10	support element	96341000	4	1
11	pin	97546000	1	1
12	mounting set	96179000	4	1