

AXOR MyEdition

Single lever basin mixer 70 with push-open waste set

Finish: **Chrome/Mirror Glass** Article Number: **47010000**



product features

- consists of: single lever basin mixer, plate, waste set
- ComfortZone: 70
- projection: 151 mm
- spout height: 70 mm
- handle variant: lever handle
- plate of glass made of safety glass
- spray type: PowderRain
- maximum flow rate at 3 bar: 5 l/min
- ceramic cartridge
- temperature limitation adjustable
- with isolated water conduction - without contact with nickel and lead
- suitable for continuous flow water heaters
- push-open waste set G 1¼
- connection type: G ¾ hose connections
- connection dimension: DN15
- EU taxonomy: max. 6 l/min - Substantial Contribution (SC) possible

Technology



Design awards



reddot winner 2020

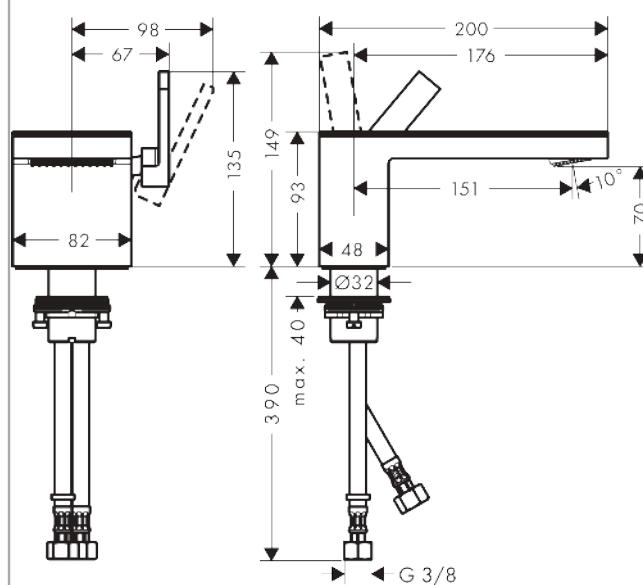


reddot winner 2021

Product image



Scale drawing



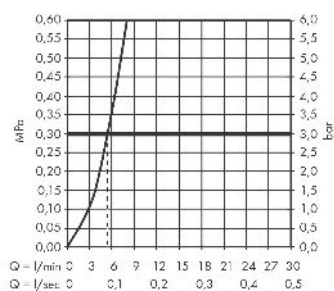
AXOR MyEdition

Single lever basin mixer 70 with push-open waste set

Finish: **Chrome/Mirror Glass** Article Number: **47010000**



Flowchart

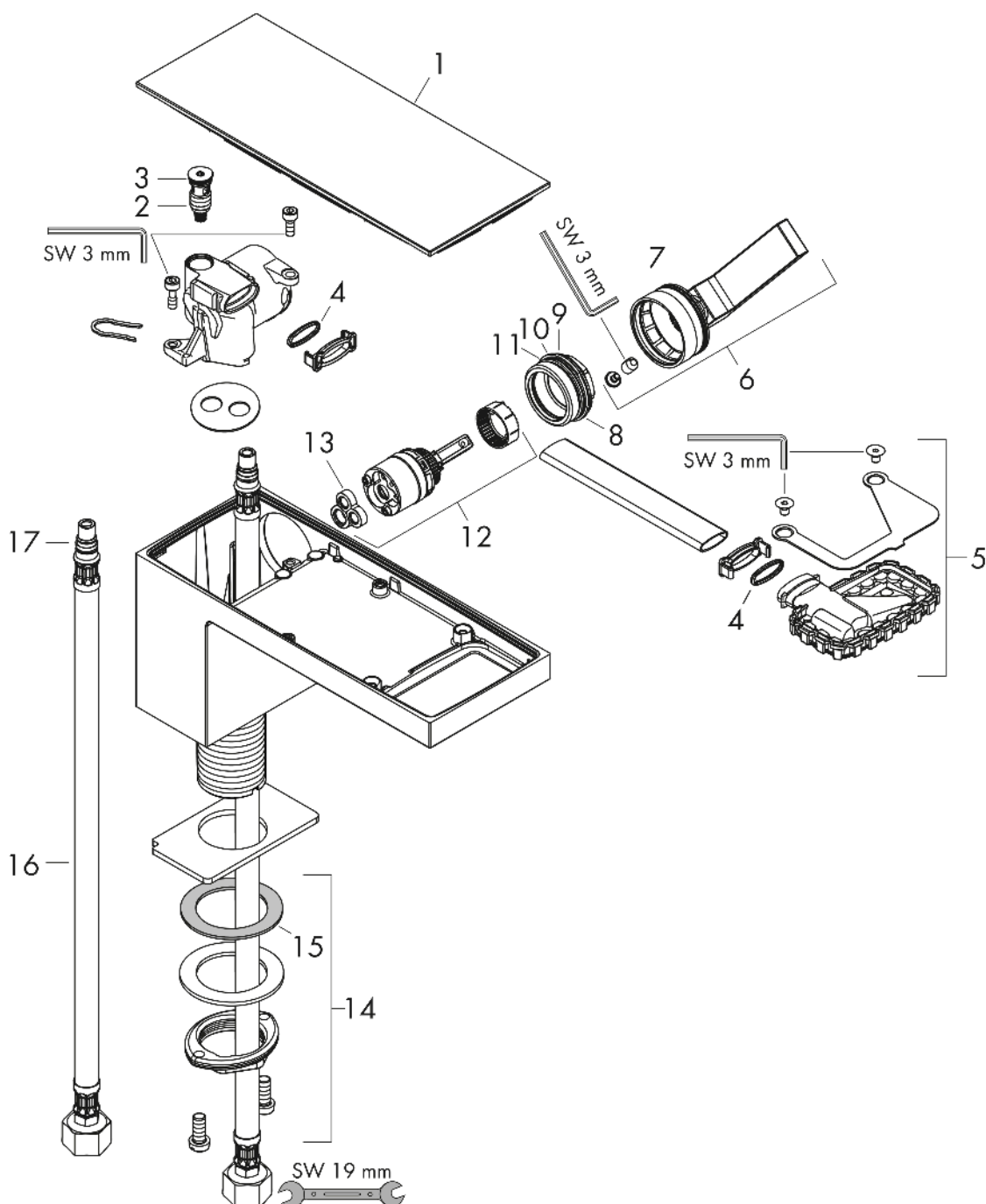


AXOR MyEdition
Single lever basin mixer 70 with push-open waste set
 Finish: **Chrome/Mirror Glass** Article Number: **47010000**



Exploded Drawing

Year of production: >10/18



AXOR MyEdition
Single lever basin mixer 70 with push-open waste set
 Finish: **Chrome/Mirror Glass** Article Number: **47010000**



Spare part list

Year of production: >10/18

| Pos. | | Article Number | PC | PU |
|------|-------------------------------------|----------------|----|----|
| 1 | cover | 47900000 | 99 | 1 |
| 2 | service unit | 93384000 | 10 | 1 |
| 3 | O-ring 8x1,75 | 97827000 | 1 | 1 |
| 4 | O-ring 13x1,5 | 98475000 | 1 | 1 |
| 5 | spray former | 93385000 | 14 | 1 |
| 6 | handle | 93386000 | 15 | 1 |
| 7 | O-ring 33x1,5 | 98164000 | 1 | 1 |
| 8 | nut | 92926000 | 5 | 1 |
| 9 | O-ring 30x1,5 | 98433000 | 1 | 1 |
| 10 | O-ring 29x2 | 98391000 | 1 | 1 |
| 11 | O-ring 25x1,5 | 98146000 | 1 | 1 |
| 12 | cartridge, assy | 92900000 | 10 | 1 |
| 13 | seal | 93383000 | 4 | 1 |
| 14 | fixing set (Ø 32) | 13961000 | 7 | 1 |
| 15 | lever collar | 97548000 | 1 | 1 |
| 16 | connection hose 450 mm M8x0,75 G3/8 | 97206000 | 8 | 1 |
| 17 | O-ring 6,6x1,6 | 93019000 | 1 | 1 |
| a | push-open waste set | 51300000 | 99 | 1 |
| b | fixation extension 35 mm | 13898000 | 12 | 1 |
| c | cover | 47906000 | 99 | 1 |
| d | cover | 47903000 | 99 | 1 |
| e | cover | 47909000 | 99 | 1 |
| f | cover | 47913000 | 99 | 1 |
| g | cover | 47916000 | 99 | 1 |