

AXOR MyEdition

Single lever basin mixer floor-standing with push-open waste set

Finish: **Chrome/Mirror Glass** Article Number: **47040000**



product features

- consists of: single lever basin mixer, plate, waste set
- projection: 196 mm
- spout height: 1158 mm
- handle variant: lever handle
- plate of glass made of safety glass
- spray type: PowderRain
- maximum flow rate at 3 bar: 5 l/min
- ceramic cartridge
- temperature limitation adjustable
- with isolated water conduction - without contact with nickel and lead
- suitable for continuous flow water heaters
- push-open waste set G 1¼
- connection type: basic set
- connection dimension: DN15
- EU taxonomy: max. 6 l/min - Substantial Contribution (SC) possible

Technology



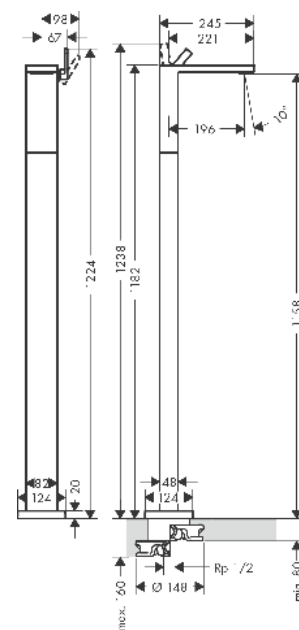
Design awards

red*dot* winner 2020red*dot* winner 2021

Product image



Scale drawing



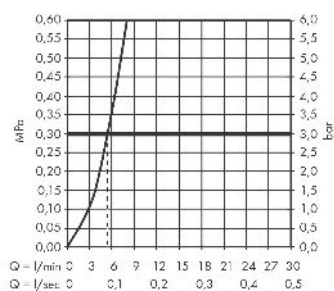
AXOR MyEdition

Single lever basin mixer floor-standing with push-open waste set

Finish: **Chrome/Mirror Glass** Article Number: **47040000**



Flowchart

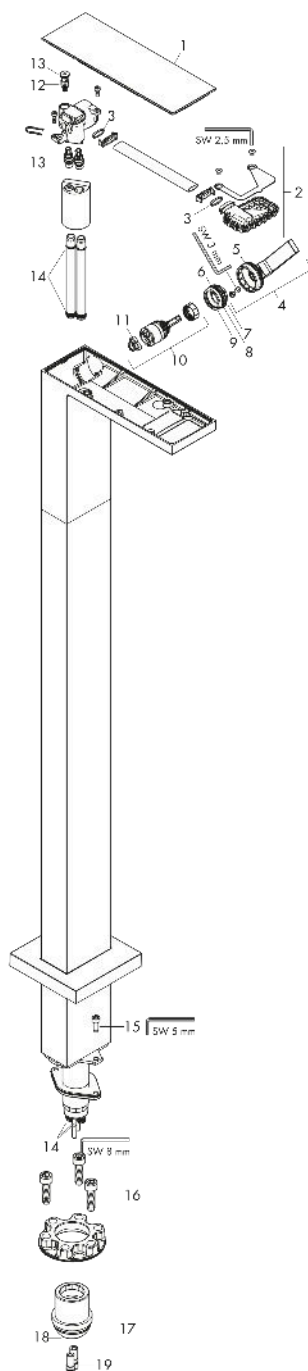


AXOR MyEdition
Single lever basin mixer floor-standing with push-open waste set
 Finish: **Chrome/Mirror Glass** Article Number: **47040000**



Exploded Drawing

Year of production: >10/18



AXOR MyEdition
Single lever basin mixer floor-standing with push-open waste set
 Finish: **Chrome/Mirror Glass** Article Number: **47040000**



Spare part list

Year of production: >10/18

Pos.		Article Number	PC	PU
1	cover	47901000	98	1
2	spray former	93385000	14	1
3	O-ring 13x1,5	98475000	1	1
4	handle	93386000	15	1
5	O-ring 33x1,5	98164000	1	1
6	nut	92926000	5	1
7	O-ring 30x1,5	98433000	1	1
8	O-ring 25x1,5	98146000	1	1
9	O-ring 29x2	98391000	1	1
10	cartridge, assy	92900000	10	1
11	seal	93383000	4	1
12	service unit	93384000	10	1
13	O-ring 8x1,75	97827000	1	1
14	O-ring 9x1,5	98117000	1	1
15	hexagon socket screw M6x16	92857000	1	1
16	hexagon socket screw M10x35	97670000	5	1
17	O-ring 44x2,5	98162000	1	1
18	O-ring 29x3	98371000	2	1
19	O-ring 7x2	98419000	0	1
a	extension set 60 mm	97686000	98	1