

AXOR ShowerSolutions

Thermostatic module Select 600/90 for concealed installation for 4 functions

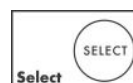
Finish: **Chrome** Article Number: **18357000**



product features

- consists of: thermostatic module, shower holder
- 4 functions
- simultaneous use of several outlets
- Select push-button on/off control for 4 functions
- depending on volume flow and installation situation approx. 50% flow rate reduction and integrated shut off function
- thermostat cartridge, Start/stop valve to operate the functions
- flow rate per outlet: 26 l/min
- flow rate by simultaneous use of all outlets: 38 l/min
- maximum flow rate at 3 bar: 38 l/min
- min. operating pressure: 1 bar
- max. operating pressure: 10 bar
- Safety stop at 40 °C
- temperature limitation adjustable
- for shower hoses with a conical nut
- connection type: basic set
- thermostat is delivered with buttons Waterfall, Rain large, MonoRain, hand shower

Technology



Certificates / Sustainability



AXOR ShowerSolutions

Thermostatic module Select 600/90 for concealed installation for 4 functions

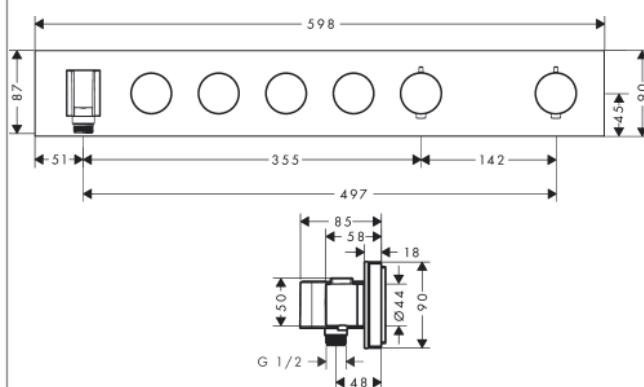
Finish: **Chrome** Article Number: **18357000**



Product image



Scale drawing



AXOR ShowerSolutions

Thermostatic module Select 600/90 for concealed installation for 4 functions

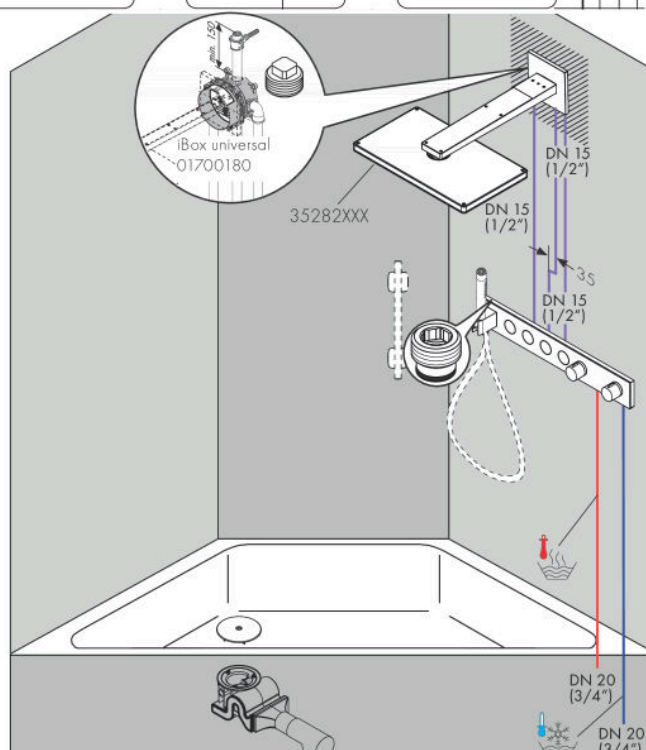
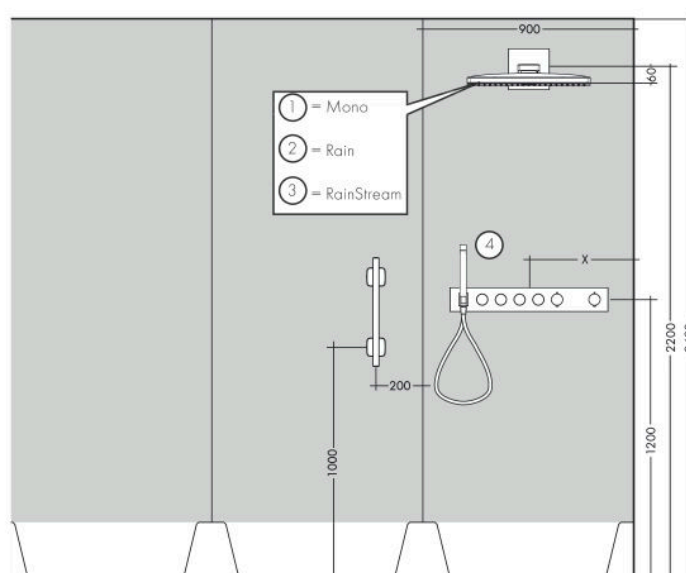
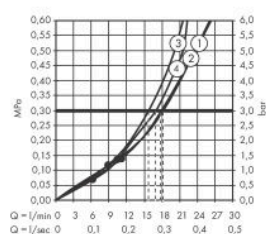
Finish: **Chrome** Article Number: **18357000**



Installation examples

AXOR Select

1831218X/18357XXX



AXOR ShowerSolutions

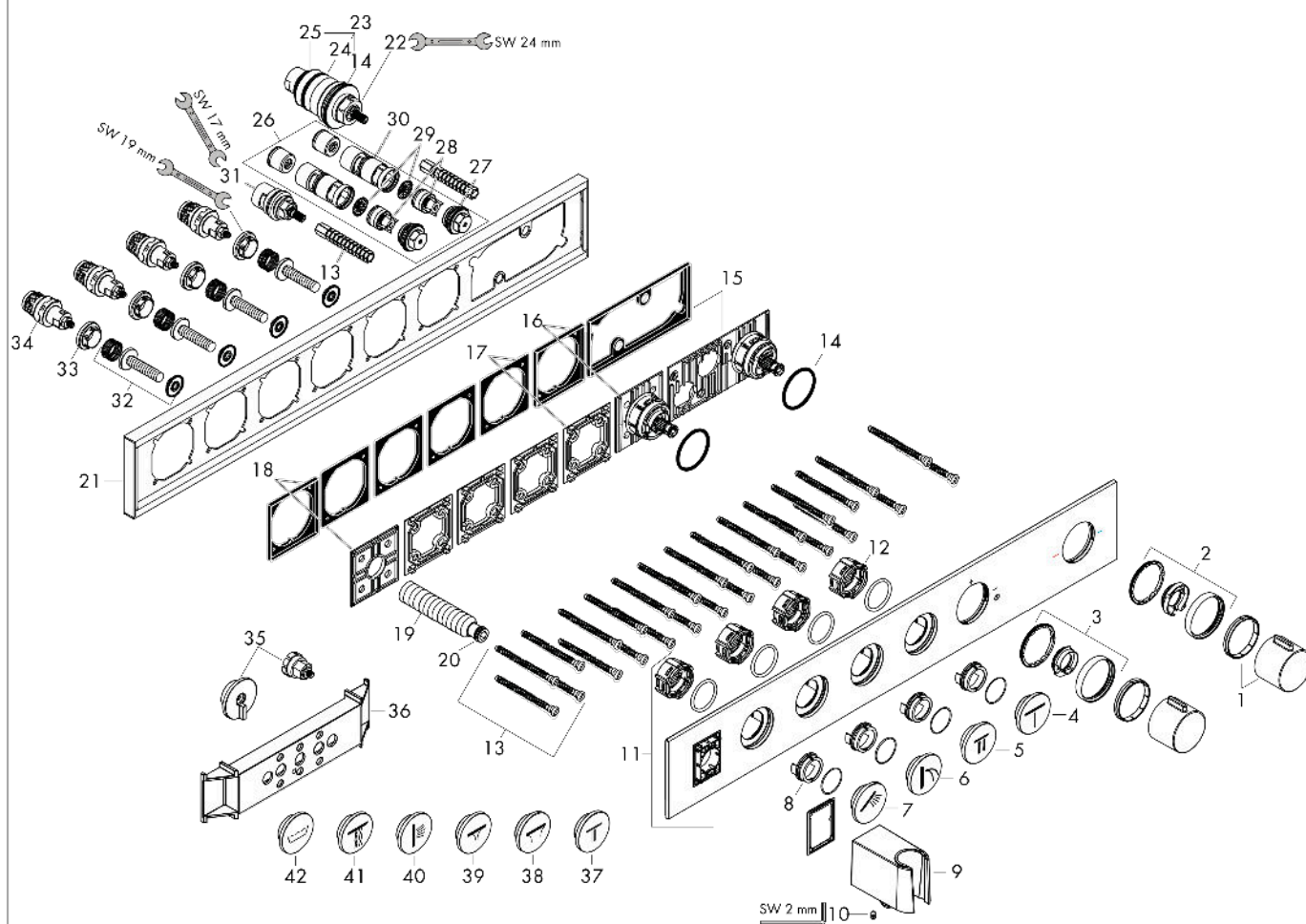
Thermostatic module Select 600/90 for concealed installation for 4 functions

Finish: **Chrome** Article Number: **18357000**



Exploded Drawing

Year of production: >11/22



AXOR ShowerSolutions

Thermostatic module Select 600/90 for concealed installation for 4 functions

Finish: **Chrome** Article Number: **18357000**



Spare part list

Year of production: >11/22

Pos.		Article Number	PC	PU
1	handle	93313000	12	1
2	safety set	93337000	8	1
3	safety set	93338000	7	1
4	symbol Mono	93310000	11	1
5	symbol head shower	93308000	11	1
6	symbol Flood jet	93309000	11	1
7	symbol handshower	93307000	11	1
8	adapter for symbol	93398000	3	1
9	shower holder, assy	94695000	13	1
10	hollow set screw M4x8	97669000	1	1
11	cover	93324000	22	1
12	Select-adapter	94806000	3	1
13	mounting kit	93102000	7	1
14	O-ring 38x2,5	98198000	2	1
15	adapter for handle	93109000	7	1
16	adapter for handle	93315000	10	1
17	support element	93330000	6	1
18	symbol tub	93300000	10	1
19	connecting thread G½	98933000	11	1
20	O-ring 11x2	98127000	1	1
21	escutcheon	93326000	20	1
22	thermostat cartridge	96633000	15	1
23	sealing set	96636000	10	1
24	O-ring 34x2	98383000	2	1
25	O-ring 26x2	98147000	1	1
26	service unit	93406000	13	1
27	O-ring 20x2	98165000	1	1
28	non return valve	96655000	4	1
29	filter	97367000	3	1
30	O-ring 20x1,5	98197000	1	1
31	shut off unit	98536000	12	1
32	Select-adapter	93103000	7	1
33	nut	98368000	4	1
34	shut off unit	95758000	14	1

AXOR ShowerSolutions

Thermostatic module Select 600/90 for concealed installation for 4 functions

Finish: **Chrome** Article Number: **18357000**



Spare part list

Year of production: >11/22

Pos.		Article Number	PC	PU
35	fit-up aid	93487000	5	1
36	fit-up aid	92540000	99	1
37	symbol head shower Rain small	93663000	11	1
38	symbol PowderRain outside	93312000	11	1
39	symbol PowderRain inside	93311000	11	1
40	symbol body shower	93334000	11	1
41	symbol Whirl	93413000	11	1
42	symbol tub	93335000	11	1
a	concealed item	18312180	99	1
b	extension 16 mm	93438000	99	1
c	extension 25 mm	93433000	19	1