

BetteStep



Information

The upper edge of the grips exceeds the bath by 65 mm.

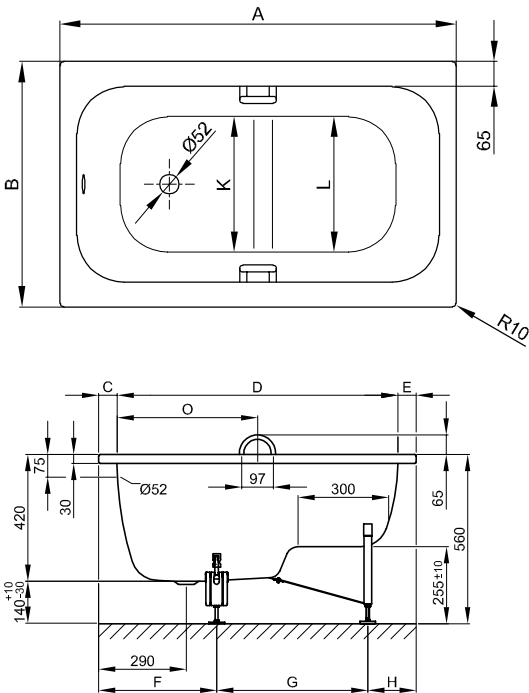
For professional installation we recommend the use of the original bath feet B23-1520.

For our baths, we recommend the enamelled BetteMono waste fittings with push-to-open/close function.

This bath is suitable for undermount installation after on-site inspection and proper installation. We can provide you with the relevant cut-out data on request.

Scope of delivery

Including noise-reducing pads.



Dimensions

article no.	dimensions in mm	A	B	C	D	E	F	G	H	K	L	O	volume*
1050	1050 × 650 × 420	1050	650	60	930	60	390	500	160	450	475	465	36 litre
1060	1180 × 730 × 420	1180	730	67	1046	67	420	610	150	510	555	530	66 litre

\*Water content less 70 litres (for human displacement).