

FIXING DOWN BASIN + SEALING EDGE



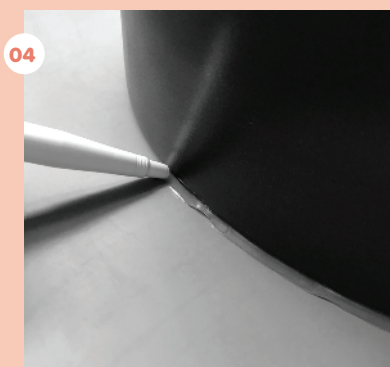
Run a line of clear wet area silicone around the underside of the basin 10mm back from the edge



Run another line of clear wet area silicone 20mm back from the waste hole



Press down into benchtop and remove excess silicone using wax and grease remover and soft cloth



Run a bead of clear wet area silicone to fill the gap between the basin and benchtop



Smooth silicone off to a neat finish and wipe clean with wax and grease remover

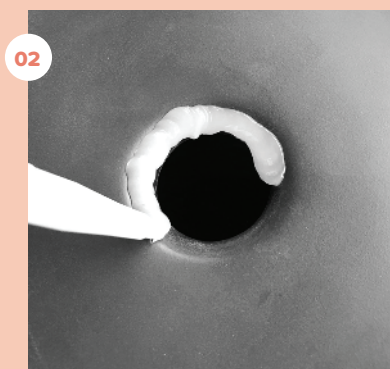


Please ensure the edge is waterproof and 100%, so that water can never get under the basin

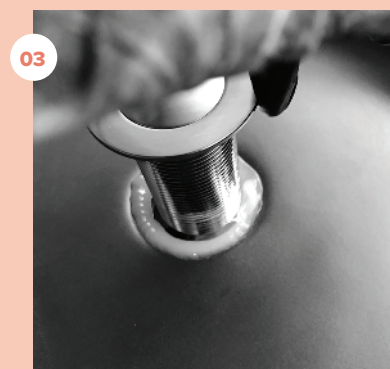
FIXING IN THE WASTE



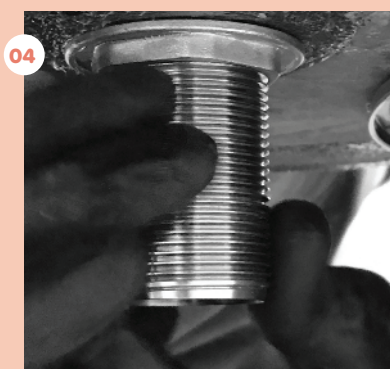
Run a bead of clear wet area silicone around the waste rim



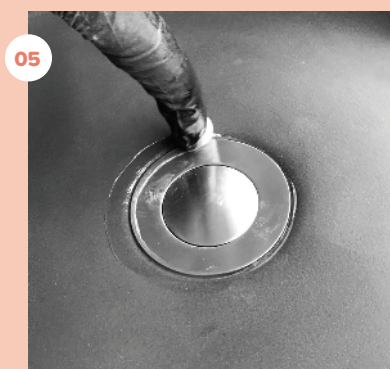
Be generous with application. It is critical that silicone overflows when waste is placed down



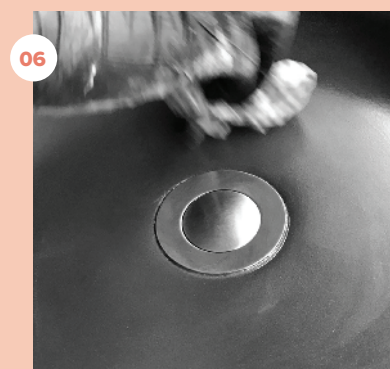
Slide waste into place



Hand-tighten waste. Do not over tighten.



Carefully push silicone around gap between waste and sink

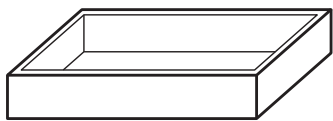


Clean excess with wax and grease remover and let dry for 24 hours

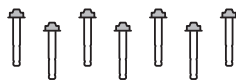
Sink Installation

(Herbert, Shelf 01, Shelf 02, Shelf 03)

YOUR WALL MOUNT SINK KIT WILL CONTAIN:



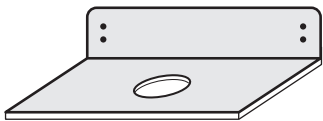
CONCRETE SINK X 1



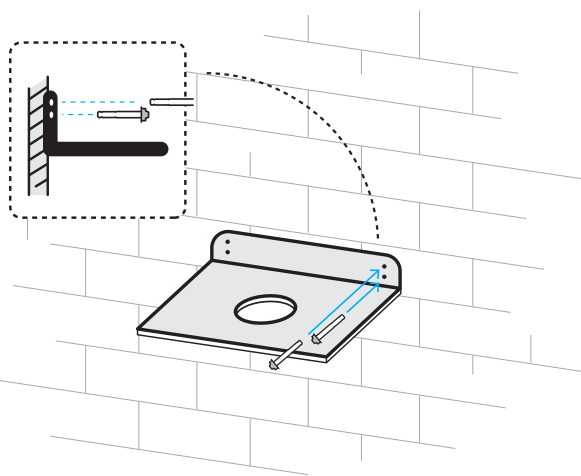
BOLTS



GLUE

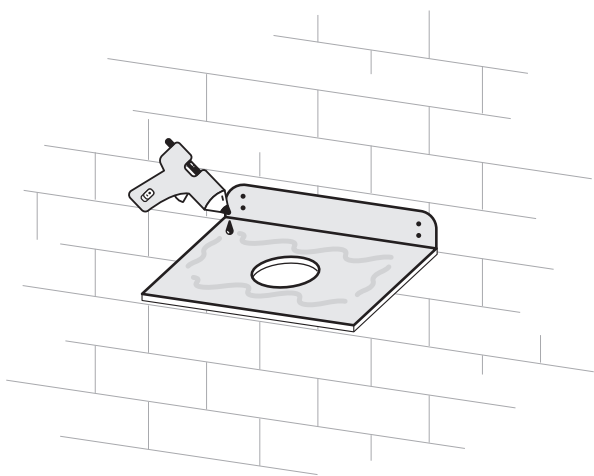


WALL MOUNT PLATE
(DESIGN VARIES PER SINK)



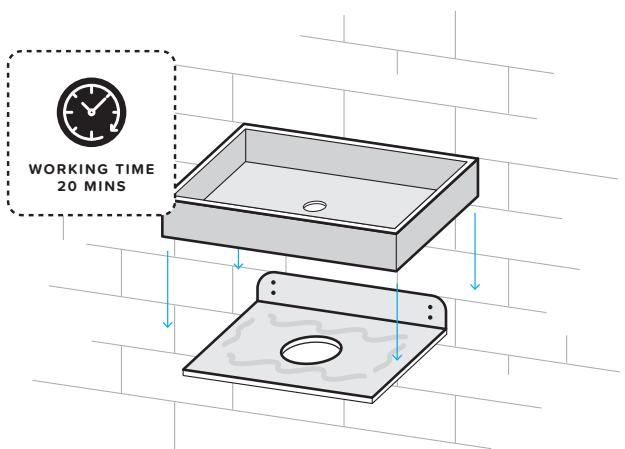
01

Bolt bracket to tiled wall, ensuring bracket is placed at level height. Be sure to tape over tiles before drilling.



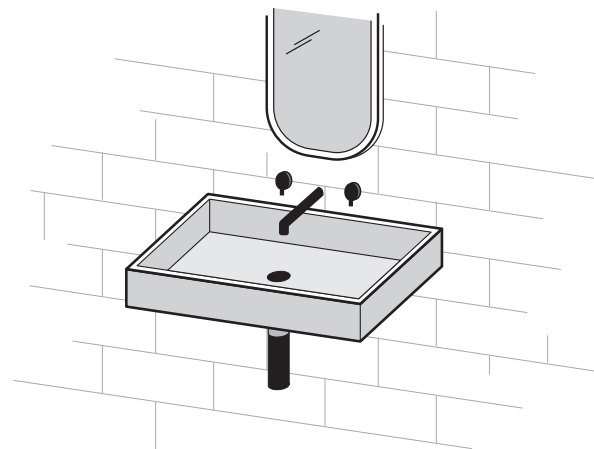
02

Apply adhesive provided to the bracket



03

Lower basin onto glued brackets, ensure placed centrally. Working time: 20 mins

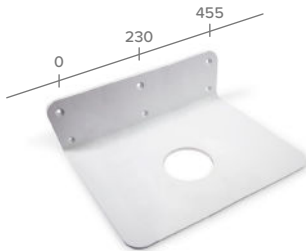


04

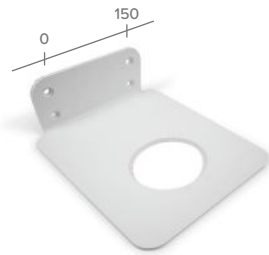
Carefully fit plumbing fixtures while glue dries. Glue needs 20 mins to touch dry



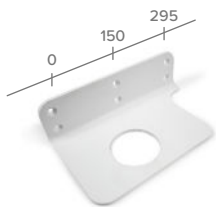
BOWL BRACKET
L365mm x W300mm x H90mm
(L14.3in x W11.8in x H3.5in)
Bowl, Bowl Two Tone, Funl,
Prism Circle, Stepp Circle, Tubb
**Ensure mounted before tiling*



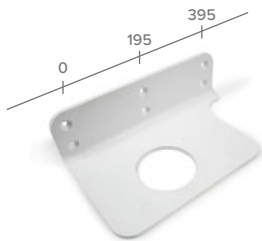
BOX BRACKET
L350mm x W505mm x H100mm
(L13.7in x W19.8in x H3.9in)
Box, Box Two Tone, Prism Rectangle,
Stepp Rectangle, Vesl Rectangle
**Ensure mounted before tiling*



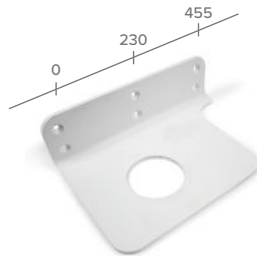
CUBE BRACKET
L320mm x W250mm x H95mm
(L12.5in x W9.8in x H3.7in)
Cube Basin
**Ensure mounted before tiling*



SHELF 01 BRACKET
L192mm x W285mm x H92mm
(L7.5in x W11.2in x H3.6in)
Shelf 01 Basin
**To be mounted after tiling*



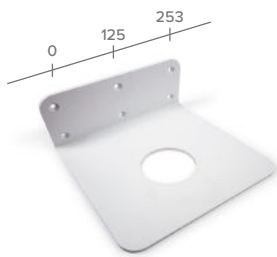
SHELF 02 BRACKET
L242mm x W445mm x H92mm
(L9.5in x W17.5in x H3.6in)
Shelf 02 Basin
**To be mounted after tiling*



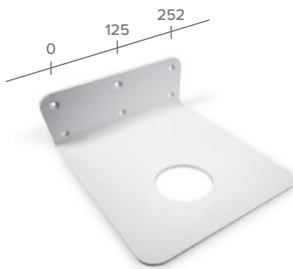
SHELF 03 BRACKET
L342mm x W505mm x H74.5mm
(L13.4in x W19.8in x H2.9in)
Shelf 03 Basin
**To be mounted after tiling*



SHELF OVAL BRACKET
L342mm x W310mm x H92mm
(L13.4in x W12.2in x H3.6in)
Shelf Oval Basin
**To be mounted before tiling*



HERBERT BRACKET
L297mm x W305mm x H122mm
(L11.6in x W12.0in x H4.8in)
Herbert Basin
**To be mounted after tiling*



VESL SQUARE BRACKET
L350mm x W300mm x H100mm
(L13.7in x W11.8in x H3.9in)
Vesl Square Basin
**Ensure mounted before tiling*



L BRACKETS:
To secure Stand or Cylinder to wall

SPEC INFO

Powdercoated white aluminium wall hang bracket. Supplied with fixings for timber/masonry walls.

THICKNESS

Wall Hang Bracket: 8mm (0.3in)
L Bracket: 3mm (0.1in)

WEIGHT

Wall Hang Bracket: 10kg (22lbs)
L Bracket: <250g (0.5lbs)

INSTALLATION

Timber Wall: tiny.cc/udkhlz
Masonry Wall: tiny.cc/Ogkhlz

Note: top measurements are fixing points for timber frame walls (mm).