

STRICTLY TESTED

PROUDLY AUSTRALIAN OWNED



# CAROMA

## Buttons & Bezel - 2000 Series

White

Genuine Parts

**CAROMA**  
Genuine Parts



ENGINEERED FOR AUSTRALIAN  
& NEW ZEALAND CONDITIONS



EASY TO  
INSTALL



GWA  
Bathrooms & Kitchens

**CAROMA INDUSTRIES LIMITED**  
1 Melito Court, Prestons NSW 2170  
ABN 35 000 189 499

Caroma Customer Care ☎ 13 14 16



en.org.au

Scan for  
installation  
instructions or  
see overleaf



Product Code: 405167W



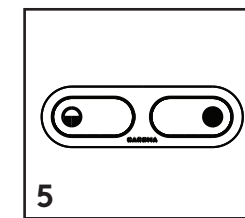
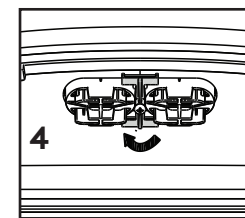
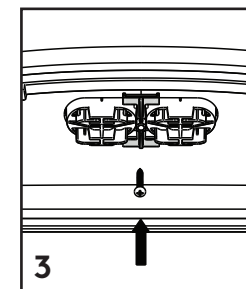
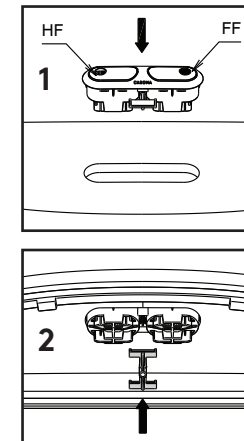
9 311440 166913

**caroma.com.au**  
Made in China

## Buttons & Bezel - 2000 Series

### Installation Instructions

1. Fit the Button assembly into the cistern lid while keeping the half flush button to the left, as shown.
2. Fit the retaining bracket on the button assembly from underneath the lid.
3. Fit the screw into the hole in the retaining bracket.
4. Using a phillips head screw driver tighten the screw until the wings of the retainer are fully in contact with lid underside surface then add half a turn.  
DO NOT OVERTIGHTEN.



**NOTE:** Never use abrasive or harsh chemical cleaners on the button or lid. Wipe with warm soapy water to maintain decorative finish.

Always ensure work is carried out by a licensed plumber.  
Warranty claims can only be made with proof of installation by a licensed plumber.  
For complete warranty details, please visit our website: [www.caroma.com.au](http://www.caroma.com.au)