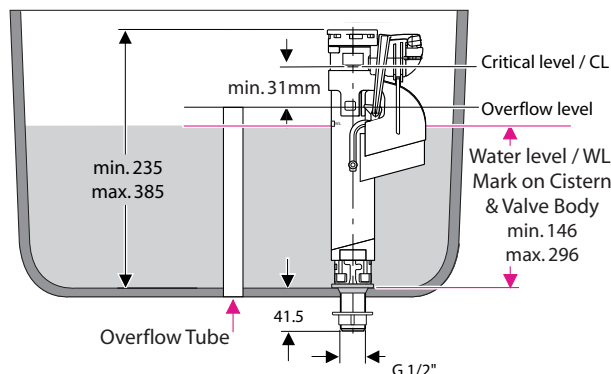
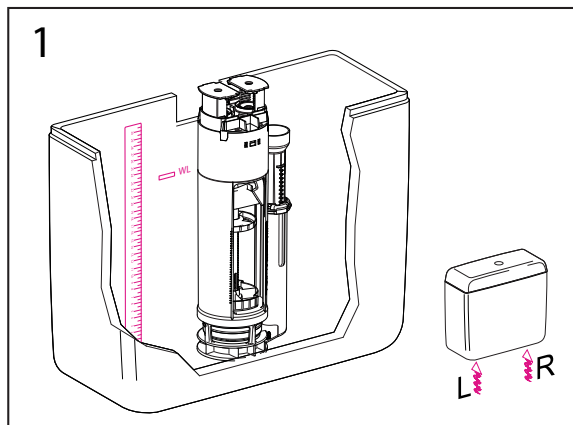


* This Inlet Valve must be installed in accordance with AS/NZS 3500.1

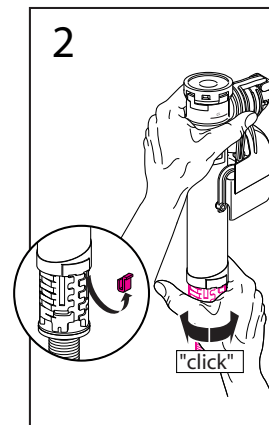
Requirements



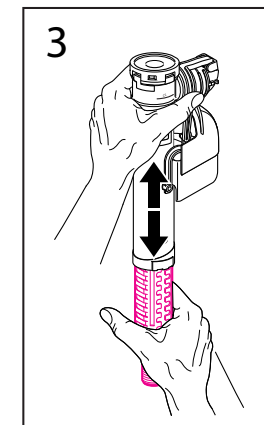
IMPORTANT:- It is critical the 31mm minimum air-separation from the top of the overflow to the critical level mark on the inlet valve is maintained.



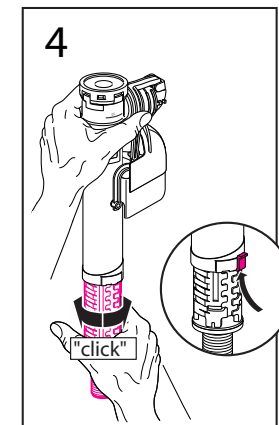
Using a ruler, measure the distance from the base of the cistern to the WL mark on the back of the cistern.



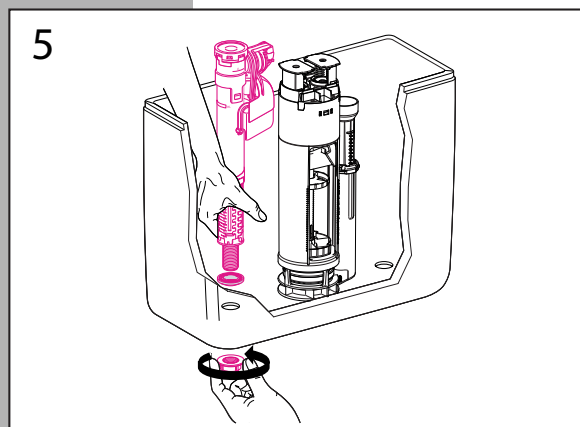
Remove clip on Quietflow valve and twist body to release from it's current set height.



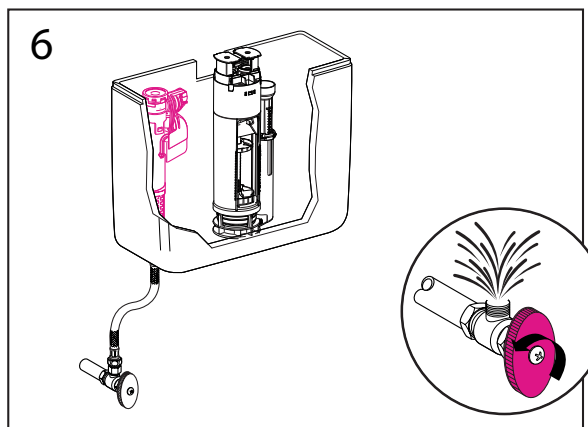
Slide valve body up/down until the WL mark on valve body corresponds to the height measured in step 1.



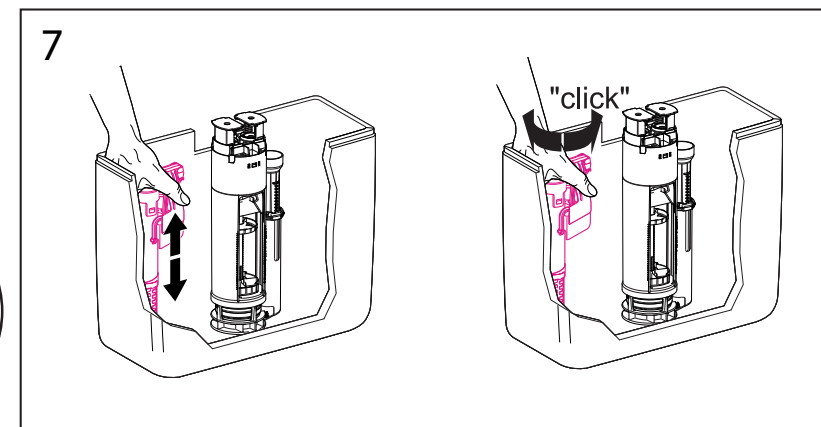
Twist & lock valve body back into place before replacing clip.



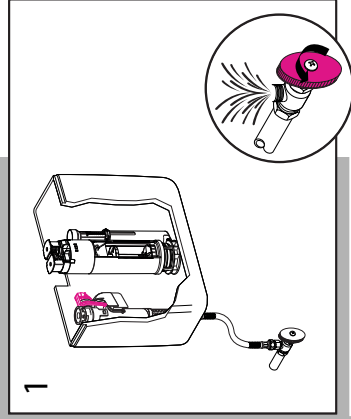
Insert Quietflow valve into cistern & secure in place using nut provided.



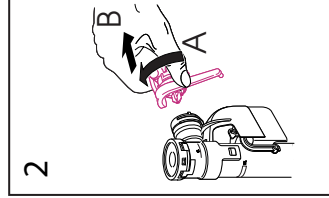
Flush the water supply line before connecting to stop cock & turn mains water on. Check water level height is correct and that there are no leaks.



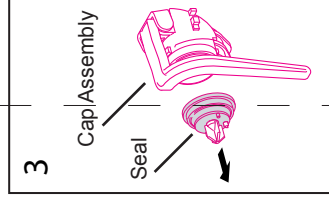
For further water level adjustment, ensure mains water is turned off. Repeat steps 2-4 until the desired water level is achieved.



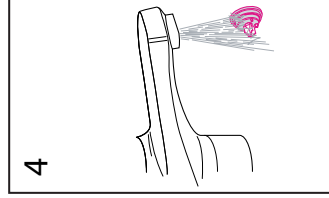
1 Ensure mains water is turned off & disconnect from stop cock.



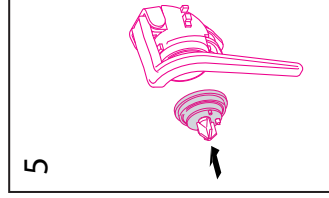
2 Rotate clockwise & pull to remove cap assembly.



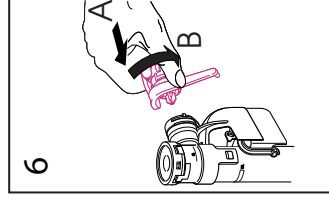
3 Remove seal from cap assembly.



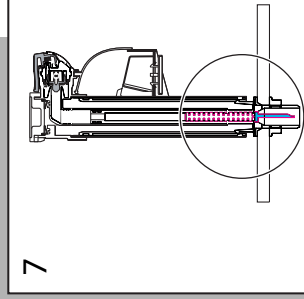
4 Wash seal to remove any dirt and inspect for damage.



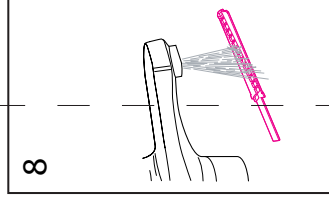
5 Replace seal onto cap assembly.



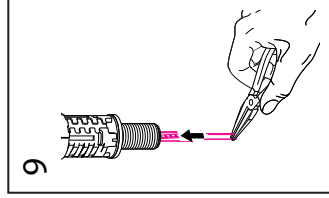
6 Push & rotate anti-clockwise to re-attach cap assembly.



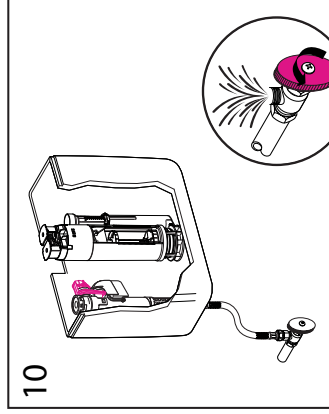
7 Using pliers carefully remove tail strainer from the base of the valve.



8 Wash tail strainer to remove any dirt.



9 Carefully replace strainer back into valve tail.



10 Flush water supply line before connecting to stop cock & turn mains water back on.

Service Requirements

- Valve Seal and Inlet Strainer may require periodic cleaning (dependant on water quality).
- procedure as described above.

Troubleshooting Guide

- Valve slow to fill OR fails to open ► Ensure tap is open and/or clean Tail Strainer.
- Valve fails to close ► Clean & inspect seal as described above, replace Cap Assembly & Seal if damaged.
- If any other issues arise ► Consult a plumber or Caroma After Sales Service.

Spare Parts Information

- Quietflow Inlet Valve compatible Spare Part Kit is **687 040**
Containing - **1 x Cap Assembly**
 - **1 x Seal**
Refer to - Steps 1, 2, 5 & 6 above.