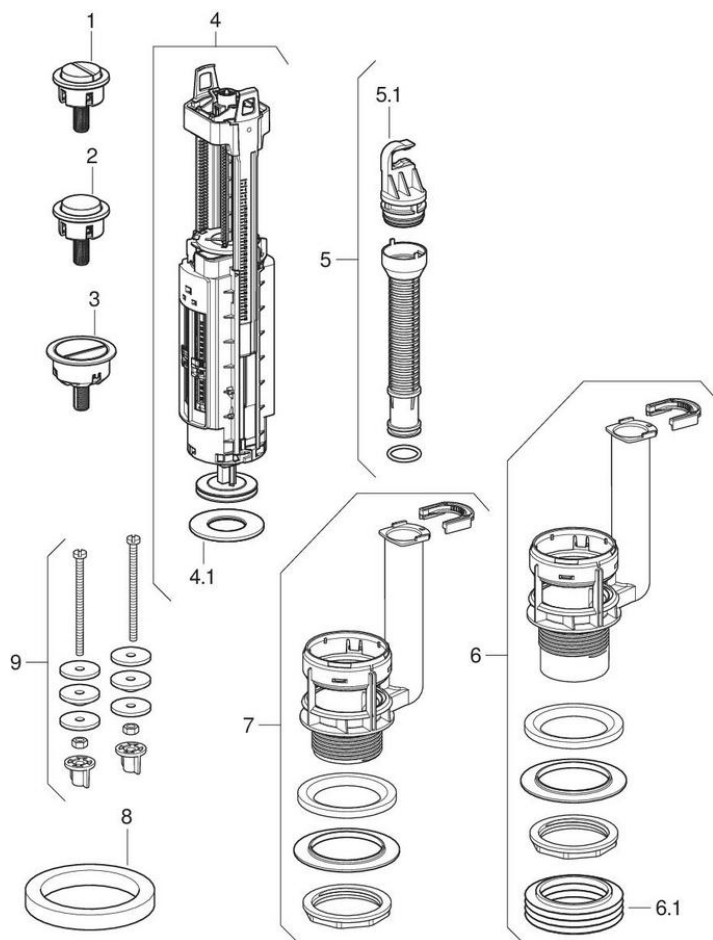


Flush valves type 290, dual or single flush

2015 -



Brand Geberit

Type Typ 220-380, Typ 290, Typ 290-360, Typ 290-380

Characteristics

Year of manufacture from

2015

Valid for articles

282.350.21.2 283.354.21.2 282.352.21.1

#	Art. no.	Description	Replacement for	Remarks
1	243.318.21.1	Geberit actuator for flush valve type 290: Model=dual flush, gloss chrome-plated	241.823.00.1	
2	243.319.21.1	Geberit actuator for flush valve type 290: Model=single flush, gloss chrome-plated		
3	243.627.21.1	Geberit actuator for flush valve type 290: Model=dual flush, gloss chrome-plated		
4	243.320.00.1	Geberit flush valve for flush valve type 290		For cistern heights 312 mm - 450 mm
4	243.321.00.1	Geberit flush valve for flush valve type 290		For cistern heights 384 mm - 522 mm
4	243.430.00.1	Geberit flush valve for flush valve type 290		For cistern heights 441 mm - 579 mm
4.1	816.418.00.1	Geberit flat gasket for flush valve for exposed and concealed cistern: d=63mm		
5	240.278.00.1	Geberit overflow pipe with valve clip		
5.1	274.400.00.1	Geberit valve clip		
6	243.713.00.1	Geberit basket for flush valve type 290		
6.1	243.854.00.1	Geberit sleeve for flush valve type 290		Prima 5 / 6
7	243.322.00.1	Geberit basket for flush valve type 290		
8	813.812.00.1	Geberit flat gasket: d=110mm		

#	Art. no.	Description	Replacement for	Remarks
9	217.869.00.1	Geberit fastening material for ceramic cistern, close-coupled		