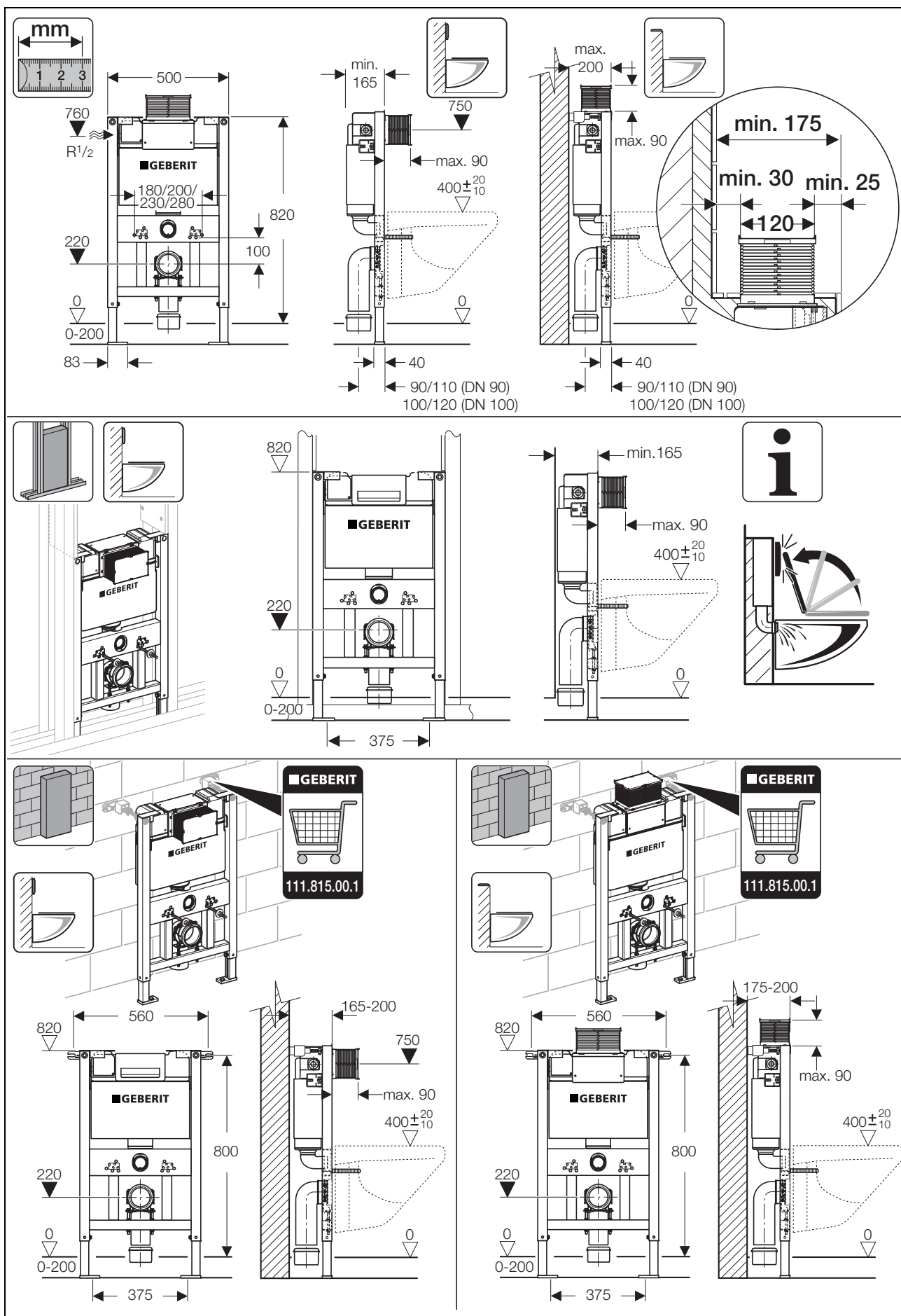
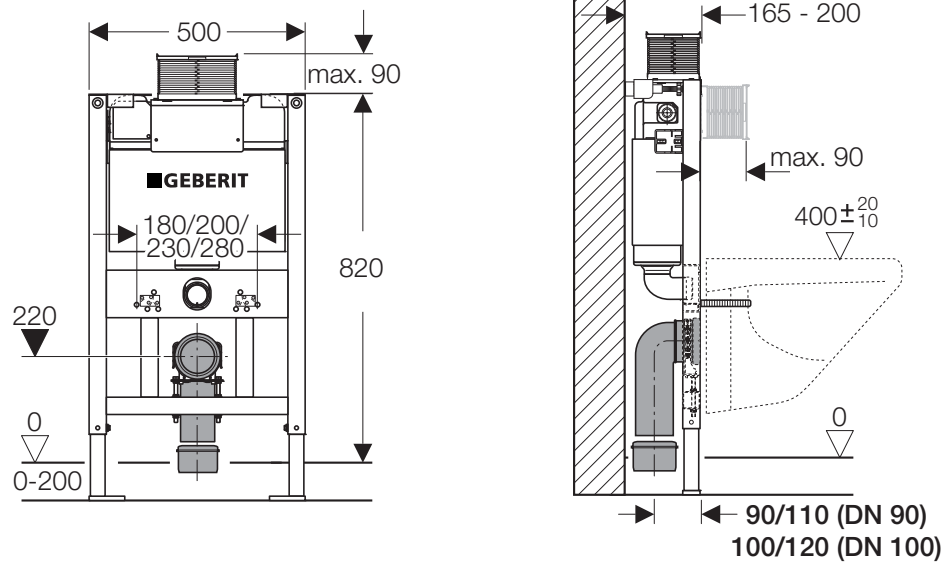


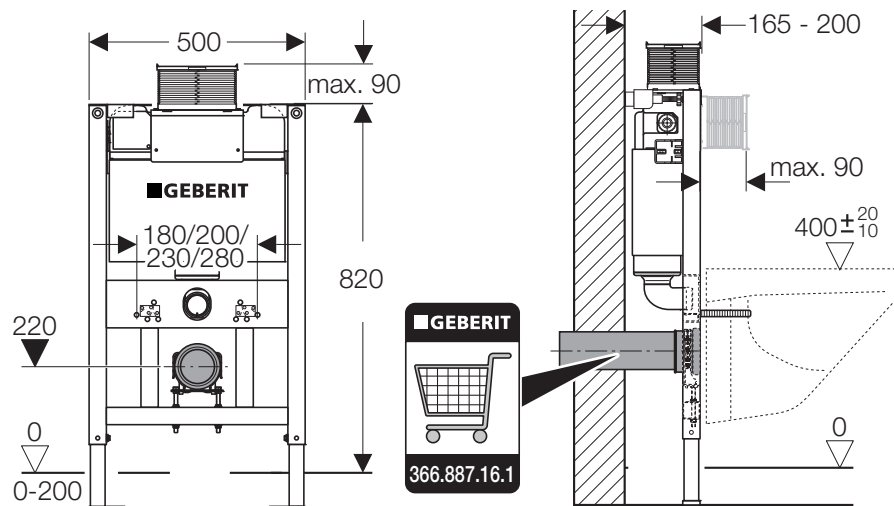
Installation



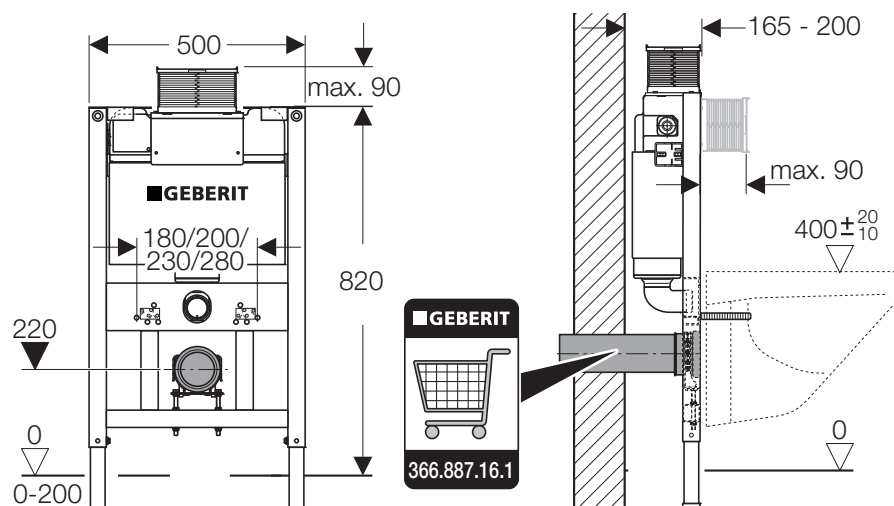
For S - Trap connection



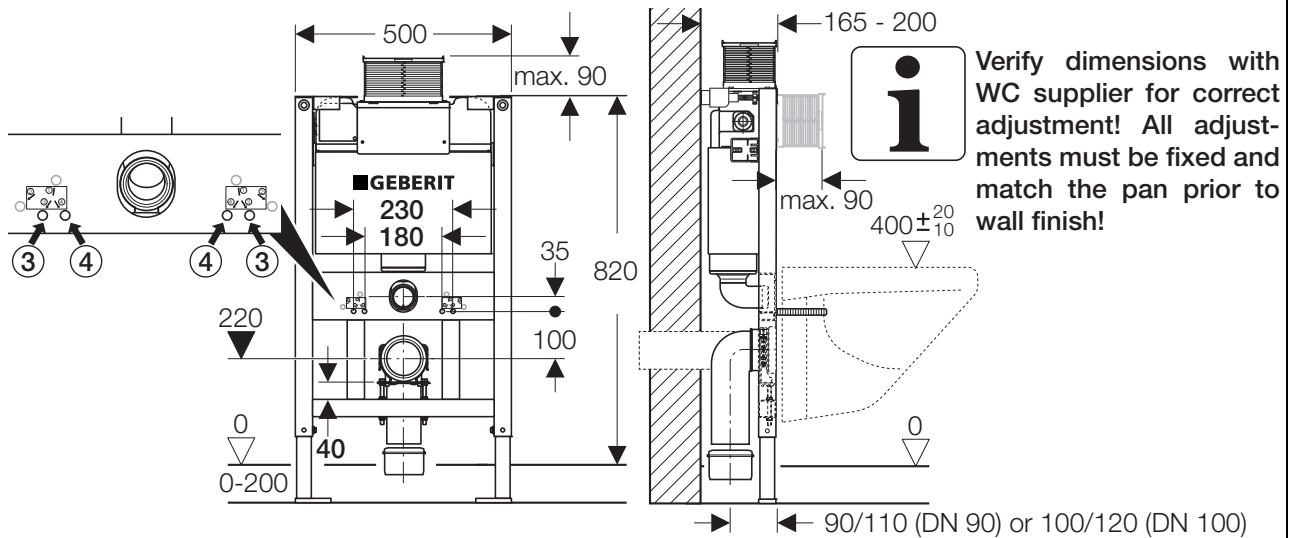
For P - Trap connection **with** fixation set Art. No. 111.815.00.1



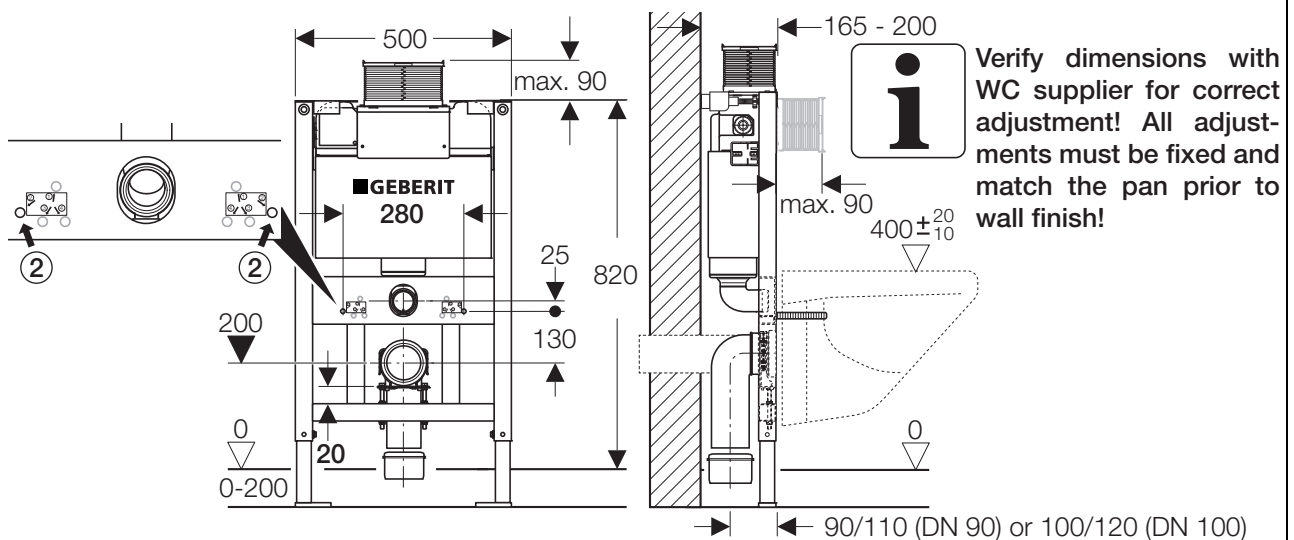
For P - Trap connection **without** fixation set Art. No. 111.815.00.1



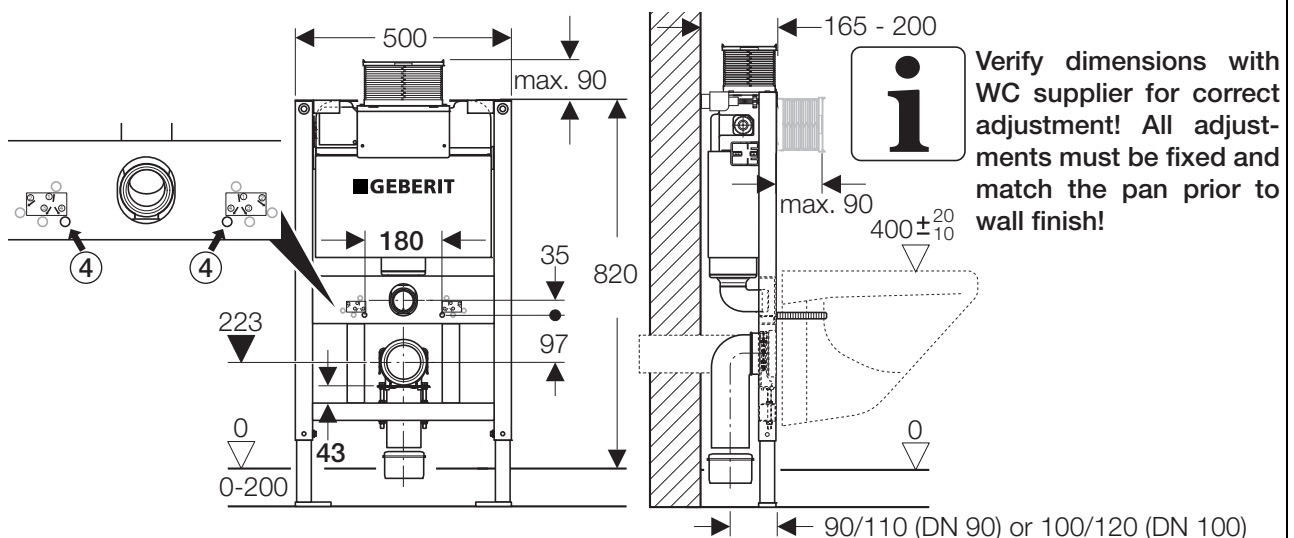
A. EN-Standard compliant wall-hung WC Pan **(Use bolt position No.3 or No.4 depending on WC Pan)**



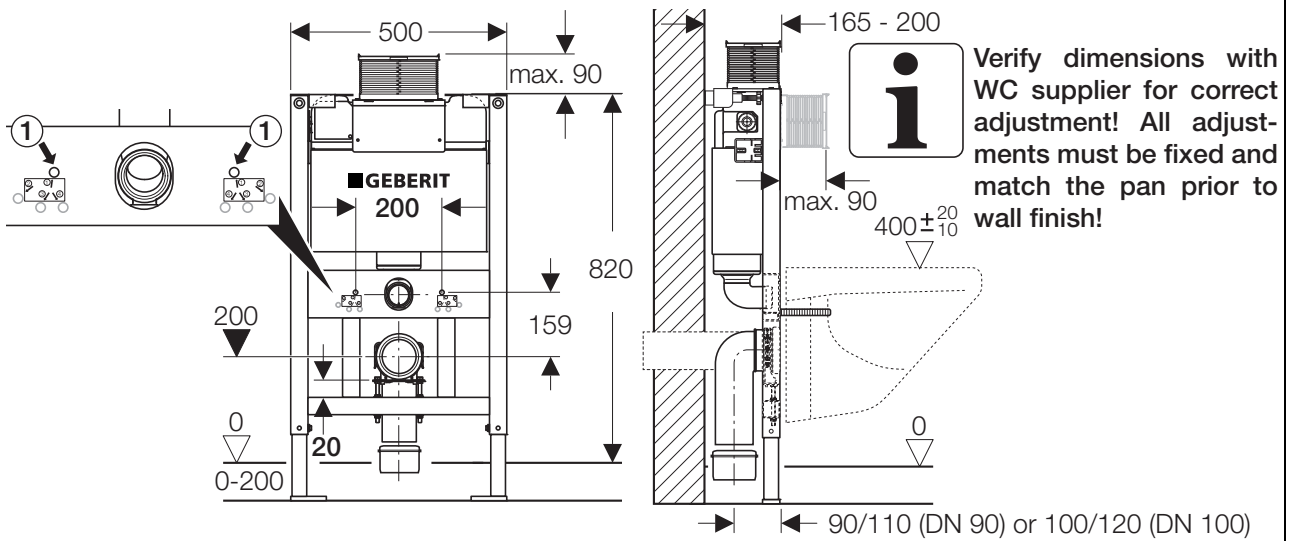
B. Fowler Lucid wall-hung WC Pan (Use bolt position No.2)



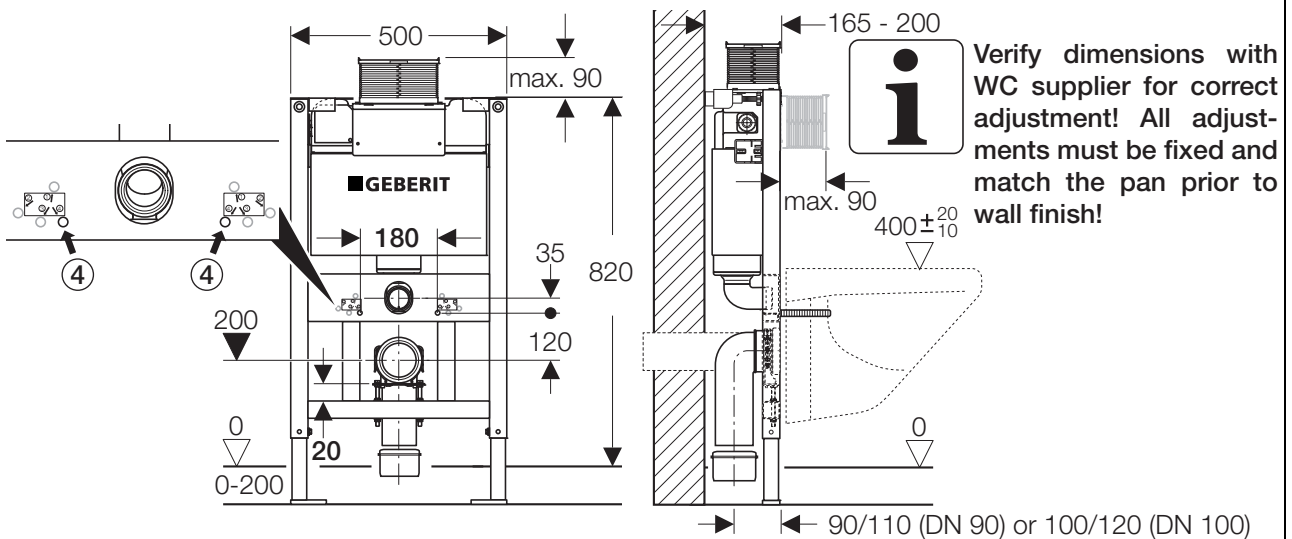
C. Caroma Royale and Metro wall-hung WC Pan (Use bolt position No.4)

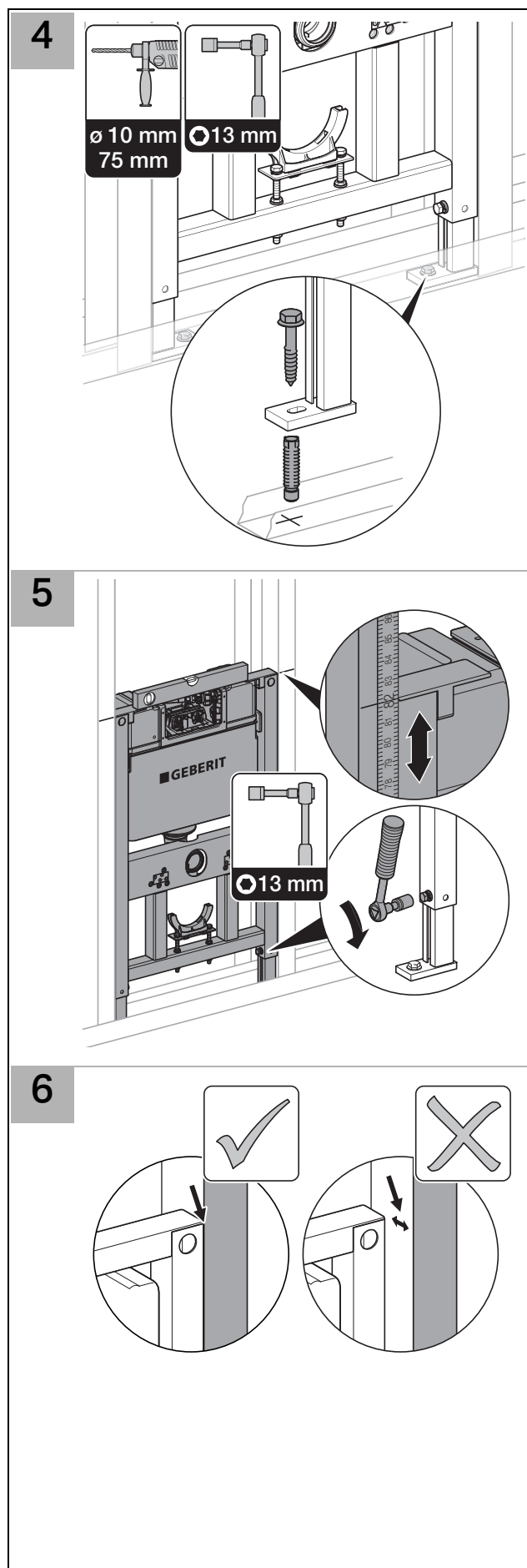
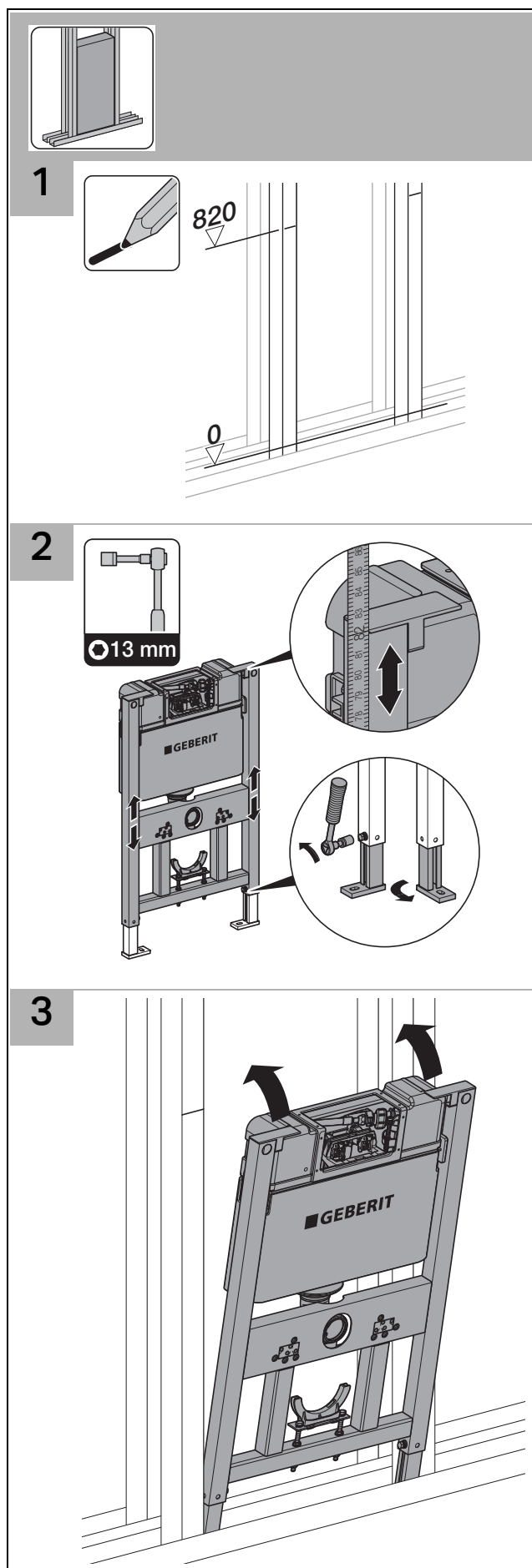


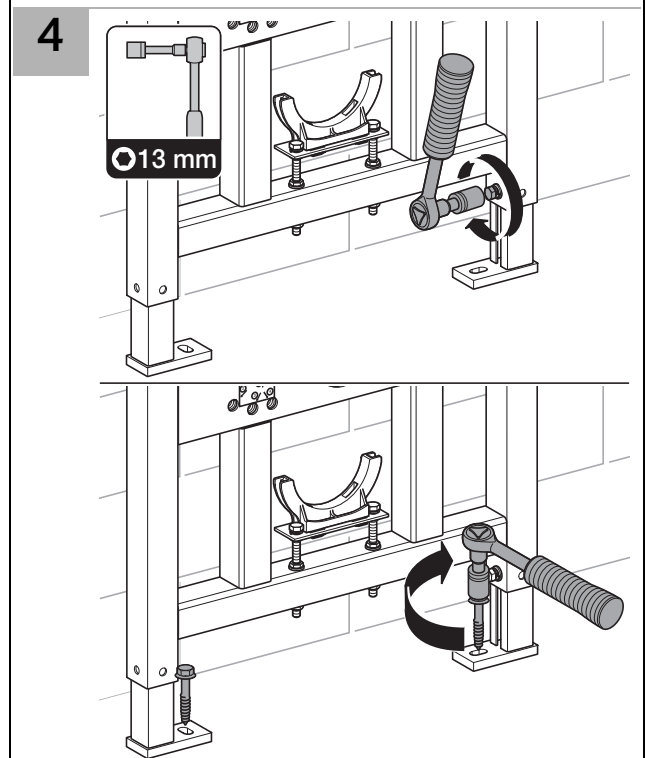
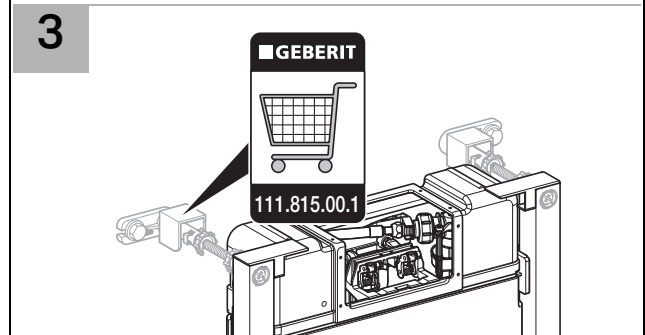
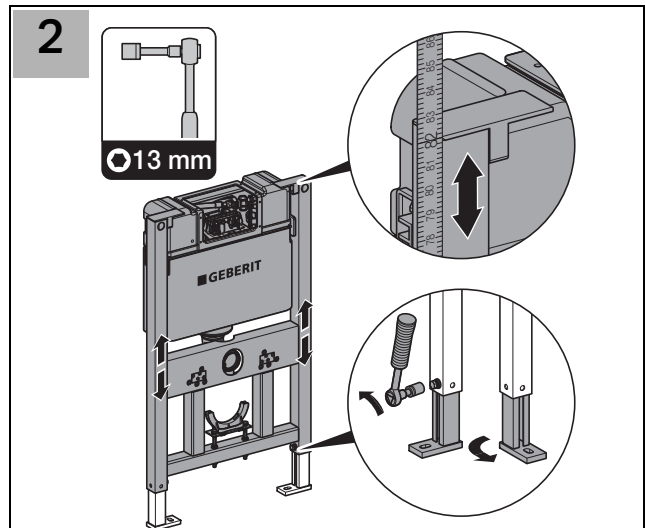
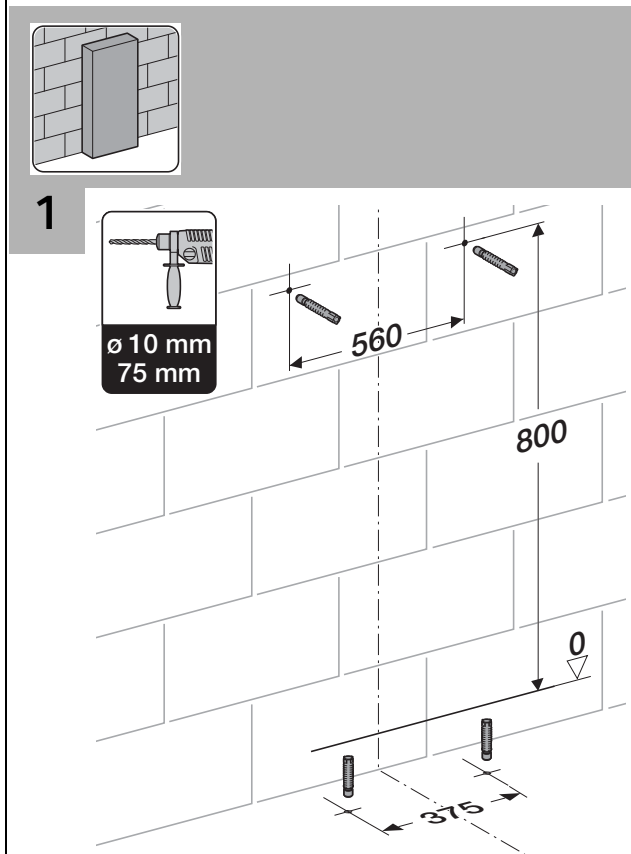
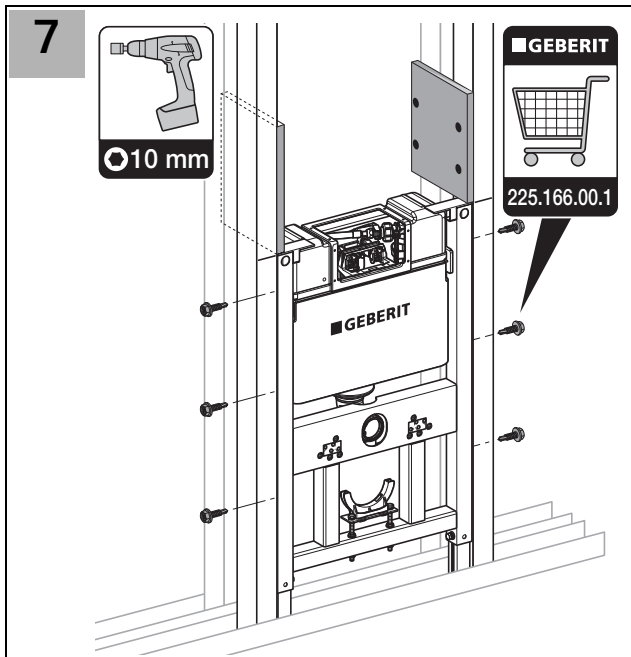
D. Caroma Walvit wall-hung WC Pan (Use bolt position No.1)



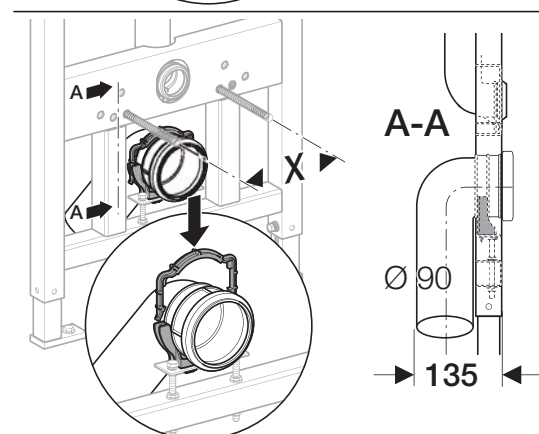
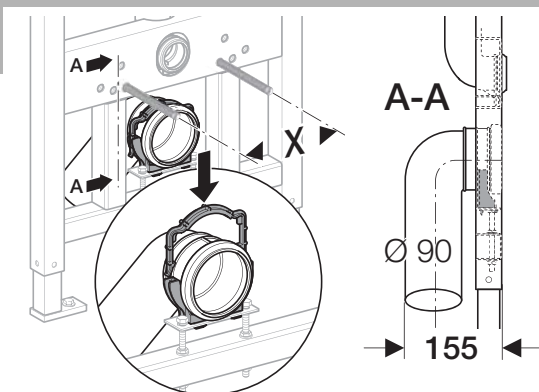
E. Caroma Cube & Fowler Seido wall-hung WC Pan (Use bolt position No.4)



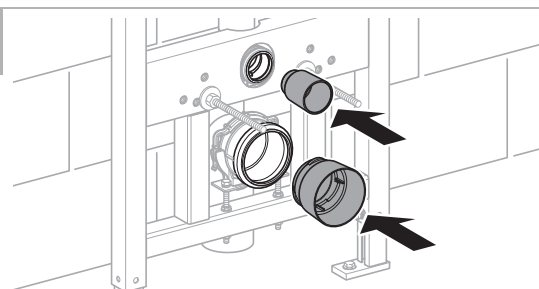




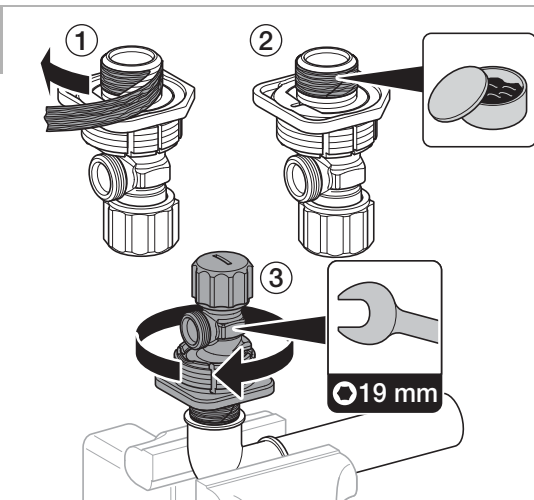
1



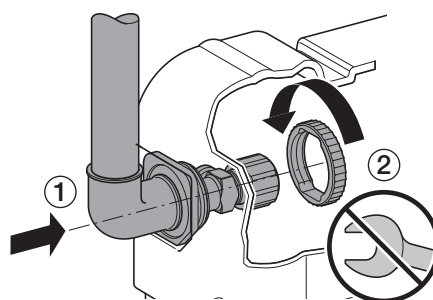
2



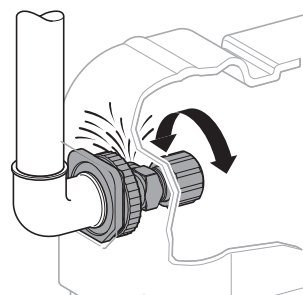
3



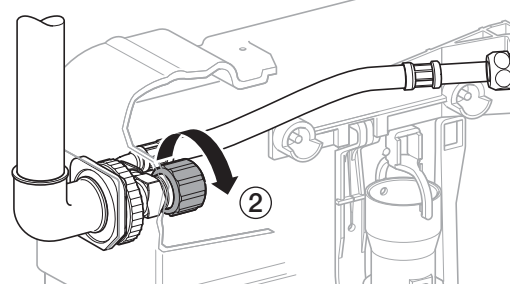
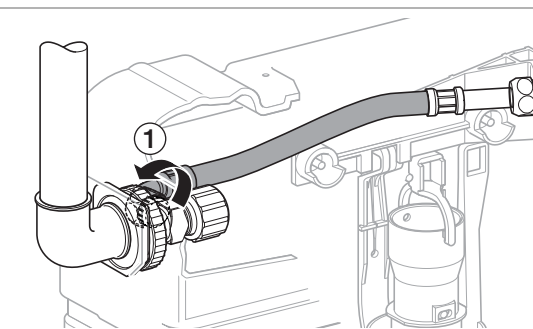
4



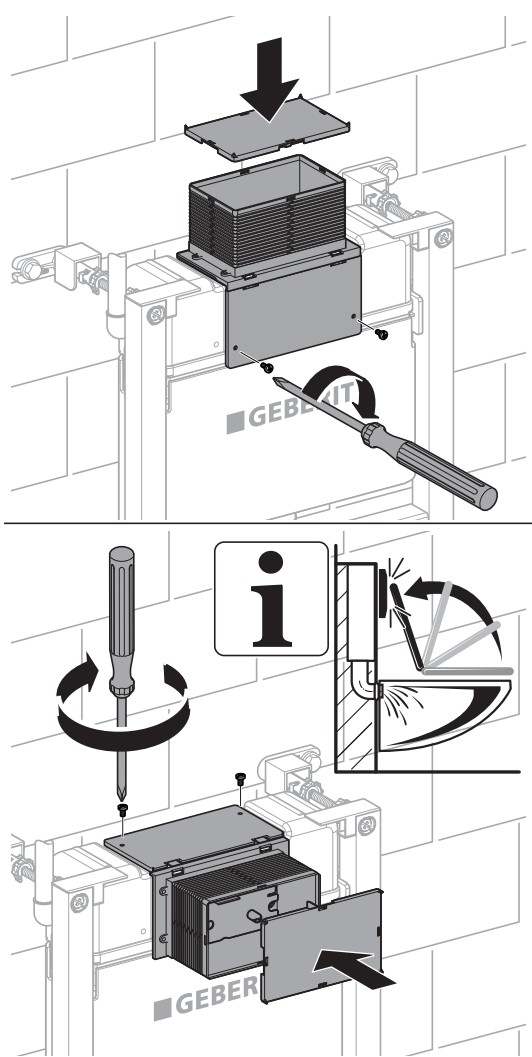
5



6



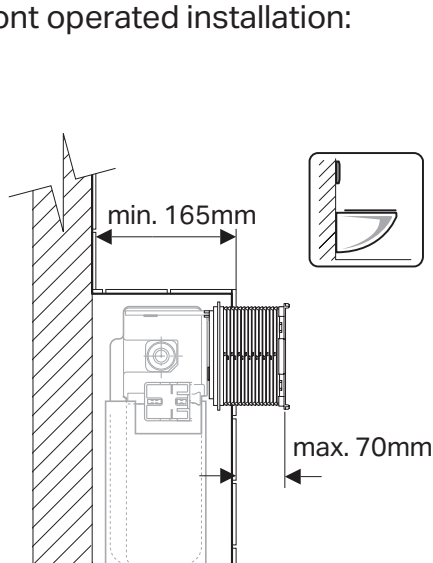
7



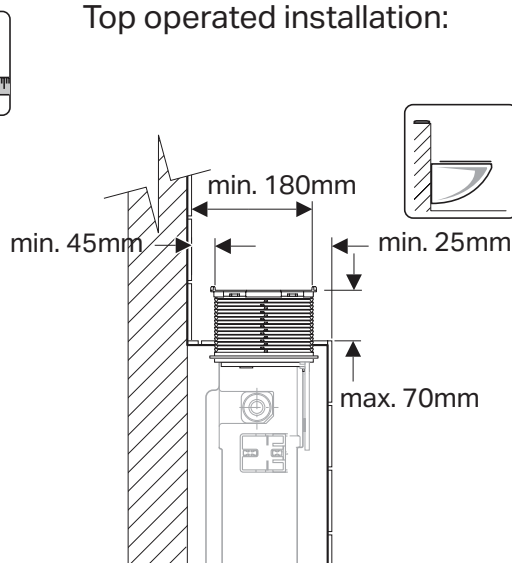
Geberit Sigma adaptor

Specification with Duofix UP120 Art. No. 111.26x.00.1 and UP120 Art. No. 110.20x.00.1

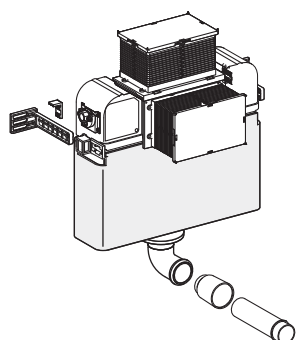
Front operated installation:



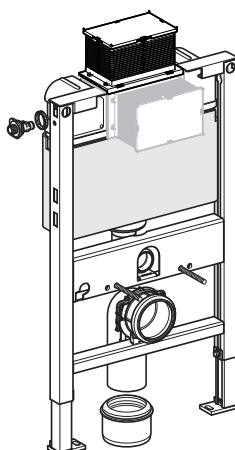
Top operated installation:



UP120



Duofix UP120



Sigma Adaptor



Please note: Cistern/Duofix must be installed in accordance to the drawing included in this document! Sigma50, Sigma20, Sigma01 and Bolero push-access plates only!

Description	Art. No.
UP120 concealed cistern top/front operated, 6/3L	110.206.00.1
UP120 concealed cistern top/front operated, 4.5/3L	110.208.00.1
Duofix UP120 installation system top/front operated 6/3L	111.262.00.1
Duofix UP120 installation system top/front operated 4.5/3L	111.263.00.1
Sigma adaptor, for UP120 cisterns	225.008.00.1

Note: Technical details and layouts are schematic only; all details for construction by others; dimensions and technical information can change without further notice. This publication Sigma Adaptor GEAUspec0004.03/12 supersedes all previous publications.

Geberit Pty Ltd.
Unit 8a, 6-8 Byfield Street
AU-2113 North Ryde

T: +61 2 9889 7866
T: +61 2 9889 7855
→ www.geberit.com.au