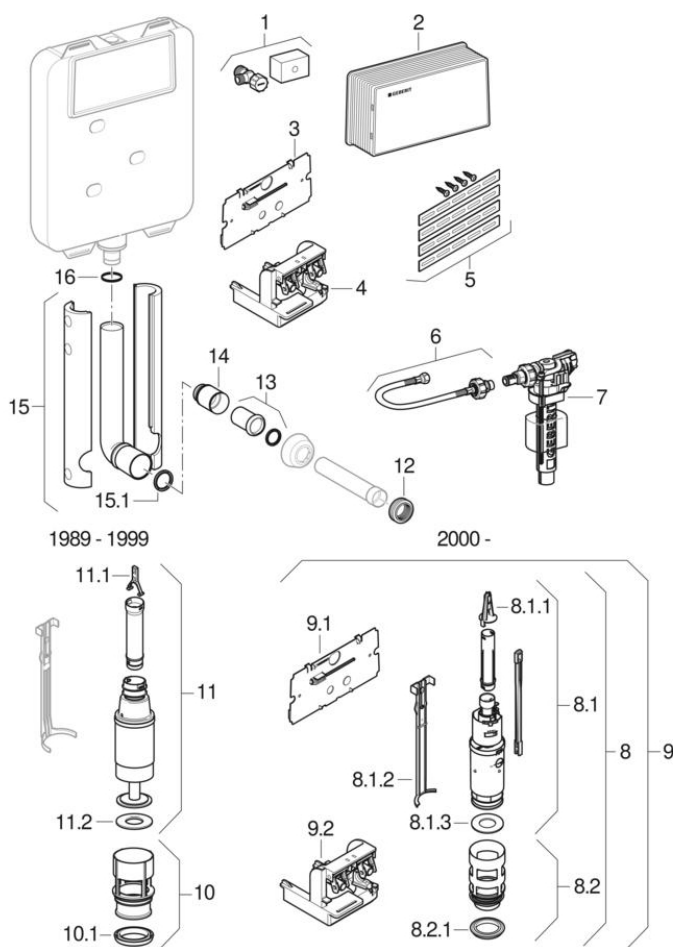


Twinline concealed cisterns 8 cm (UP170, 110.700)

1989 - 2016



Brand Geberit

Type Twinline 8 cm, UP170

Characteristics

Year of manufacture from	1989
Year of manufacture until	2016
Dimensions / Design	Service opening: 29.5 x 15.5 cm, cistern: 44 x 54 cm
Range	110.700

Valid for articles

110.707.00.1

Related spare parts

- Overview actuator plates and cover plates for Twinline concealed cisterns

#	Art. no.	Description
1	240.644.00.1	Stop cock for UP170
3	240.512.00.1	Inner cover / pushplate opening for UP170
4	240.511.00.1	Transmission block / dual flush for 110.708 cisterns
5	241.017.00.1	Wall support bracket - UP170
6	240.989.00.1	Flexible hose with 3/8" female nut for rear inlet valve Impuls380 (222.013)
8.1	240.502.00.1	Outlet valve dual flush UP170, complete.
8.1.1	241.167.00.1	Flush valve shackle
8.1.2	240.507.00.1	Holding down clamp outlet valve for UP170
8.1.3	816.418.00.1	Seal / washer (flush valve) size 63mmx32mm
8.2	240.500.00.1	Basket complete with seal for UP170
9.1	240.512.00.1	Inner cover / pushplate opening for UP170
9.2	240.511.00.1	Transmission block / dual flush for 110.708 cisterns
11	215.299.00.1	Single flush valve for (110.700 cistern)
11.1	241.167.00.1	Flush valve shackle
12	119.668.00.1	Rubber seal for flush pipe to toilet inlet 55mm
14	362.796.92.1	Protector plug for flush bend UP170
15.1	362.771.00.1	Rubber ring seal for flush bend UP170



-
- Only the listed articles are available