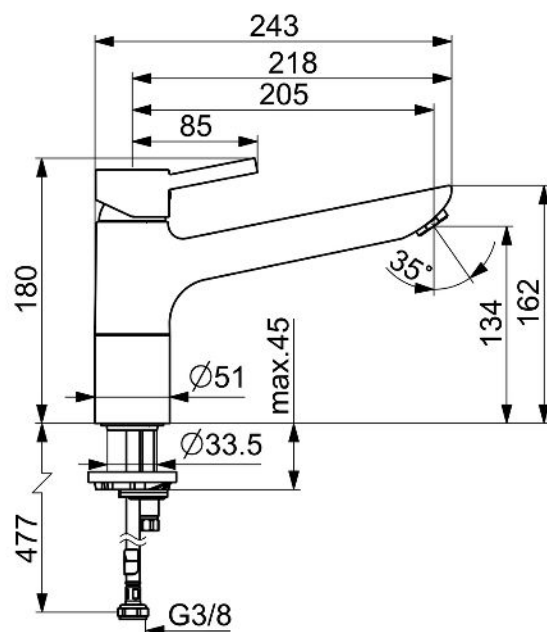
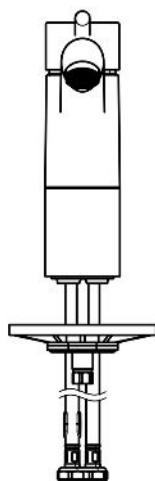
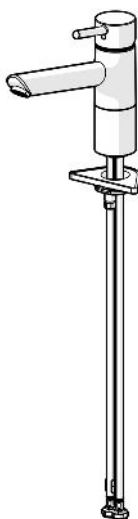


EAN: 4015474261174  
[static.hansa.com/52482277](https://static.hansa.com/52482277)



- Kitchen
- Single-lever
- Deck mounted
- Chrome
- Swivel spout
- Standard aerator
- Hot/Cold symbols, Pin shape, Single operating lever/handle
- Limitation option for maximum temperature and flow-rate, Adjustable hot water stop (included, retrofittable)
- $\varnothing$  35 mm ceramic cartridge for flow and temperature control
- Flexible inlet pipes
- Inner body made of DZR brass, Rapid installation system



Technical data

Flow properties

Flow-rate at 3 bar

12.0 l/min

Technical properties

DN-size (nominal dimension)

DN15

Hot water supply

max. +70°C

Working pressure

0.5-10 bar

Connection size

G3/8

Projection

205 mm

Backflow prevention (EN1717)

AA

Material

Brass

Regulations

EN standard

EN 817

Noise class

I (ISO 3822)

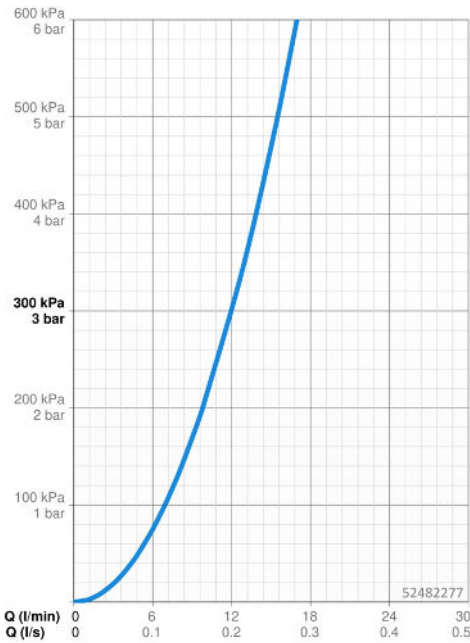
Approvals and Declarations

KIWA

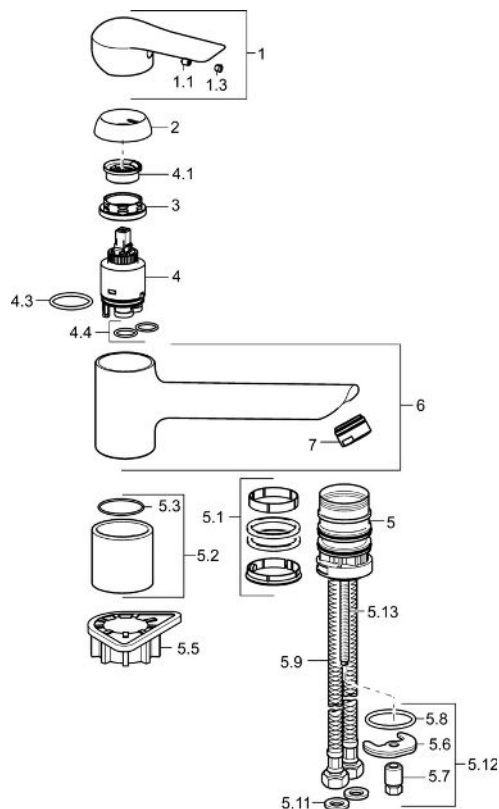
K6116/08

Declaration of conformity

DoC

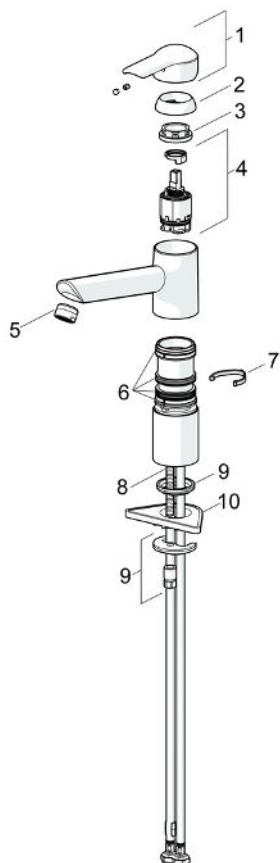


Spare parts



## SP52482273

	Name	Code
1	Lever	59913903
1	Lever	59914629
1.1	Screw, M5x8, SW2.5	59904755
1.3	Symbol plug Grey	59912112
2	Covering cap, 33x3 mm	59912504
3	Tightening nut, M37x1, AF30 Discontinued	59912111
4	Cartridge, 3.5 Eco	59912324
4	Cartridge, 3.5 Classic	59913075
4.1	Temperature adjustment limiter	59912325
4.3	O-ring, d 28.24x2.62 Discontinued	59912590
4.4	O-ring, d 10.10x1.60 Discontinued	59905072
5.1	Sealing kit	1001264V
5.1	Sealing kit Discontinued	59913968
5.2	Raising socket Discontinued	59913980
5.3	O-ring, d 34x1.5	59913975
5.5	Supporting plate	59910008
5.6	Fixing plate	59904765
5.7	Screw, M8x1, SW13	59904766
5.8	O-ring, d 36.09x d 3.53	59913396
5.9	Flexible pipe, L=550, G3/8-M8x1	59913969
5.10	O-ring, 6x1.4	59913266
5.11	Gasket, 9.5x14.4x2	59912551
5.12	Fixing set	59910749
5.13	Fixing screw, M8x1, L=140	59912474
6	Spout Discontinued	59914061
7	Aerator, M24x1 STD HC A	59902366
N.I.	Key, SW30/34	59912108



### SP52482273(2020)

	Name	Code
01	Lever	59913903
01	Lever	59914629
02	Covering cap, 33x3 mm	59912504
03	Tightening nut, M37x1, SW30	1005680V
04	Cartridge, 3.5 Classic	59913075
05	Aerator, M24x1 STD HC A	59902366
06	Sealing kit	1001264V
07	Spout overturning stopper, 120°	59914489
08	Fixing screw, M8x1, L=140	59912474
09	Fixing set	59910749
10	Supporting plate	59910008