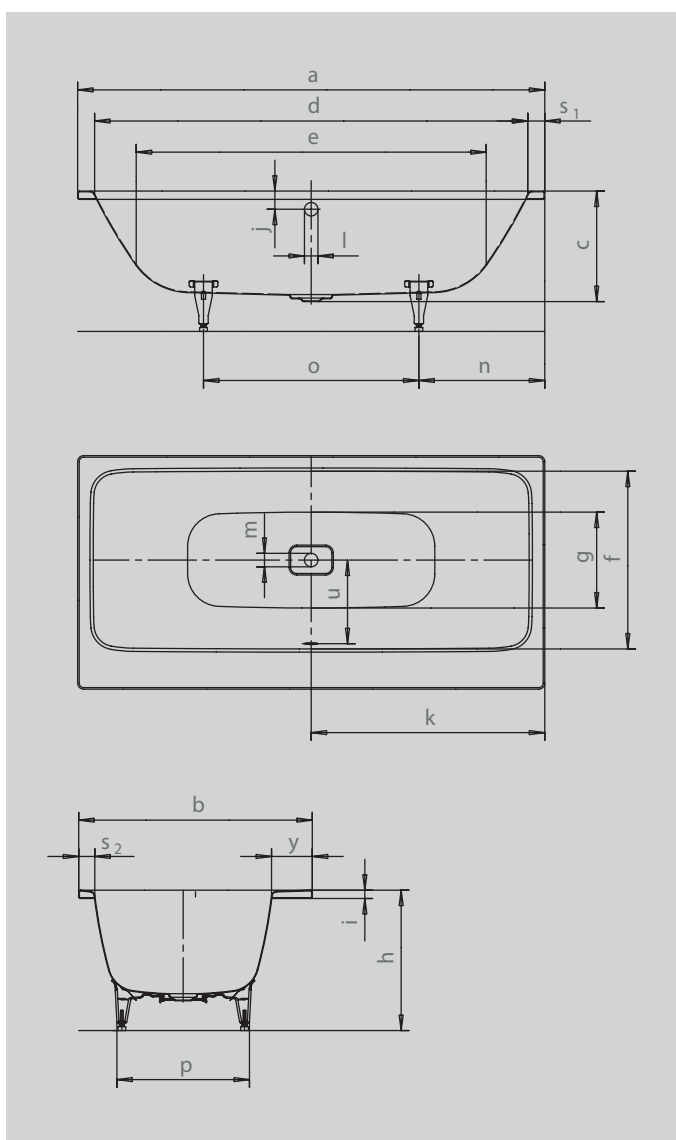


ASYMMETRIC DUO

- exciting contrast between the clear lines of the bath rim and the flowing, ergonomic design language of the interior
- generously sized storage area that can also be used as a seat or to accommodate bath rim tap fittings
- enamelled waste cover and overflow knob integrated in the bath design
- bathing with a friend: two identical back rests and centrally positioned waste
- made of Kaldewei steel enamel 3.5 mm
- **30 YEAR WARRANTY**



| Model No. | | 740 | 742 | 744 |
|--|---------------------------------|-------------|-------------|----------------|
| External length | a | 1700 | 1800 | 1900 mm |
| External width | b | 800 | 900 | 1000 mm |
| Depth | c | 425 | 425 | 425 mm |
| Internal length (top) | d | 1570 | 1670 | 1770 mm |
| Internal length (bottom) | e | 1246 | 1348 | 1484 mm |
| Internal width (top) | f | 616 | 681 | 751 mm |
| Internal width (bottom) | g | 500 | 600 | 646 mm |
| Height with feet | h | 540-560 | 540-560 | 540-560 mm |
| Height of rim | i | 32 | 32 | 32 mm |
| Distance top edge to centre of overflow hole | j | 70 | 70 | 70 mm |
| Distance bath edge to centre of drain hole | k | 850 | 900 | 950 mm |
| Diameter of overflow hole | l | 52 | 52 | 52 mm |
| Diameter of drain hole | m | 52 | 52 | 52 mm |
| Distance foot end of bath edge to centre of foot | n | 550 | 580 | 585 mm |
| Distance between the feet | o | 600 | 640 | 730 mm |
| Max. width of feet | p | 445 | 525 | 585 mm |
| Width of rim (foot end; lengthwise) | s ₁ ; s ₂ | 65; 62 | 65; 62 | 65; 62 mm |
| Distance between centre holes | u | 300 | 335 | 370 mm |
| Shelf (width) | y ₃ | 122 | 157 | 187 mm |
| Water volume** in litres | | 123 | 163 | 208 |
| Weight of the enamelled bath in kg | | 50 | 56 | 64 |
| Anti-slip | | 348 x 348 | 396 x 396 | 396 x 396 mm |
| Full anti-slip | | 740 x 252 | 876 x 252 | 924 x 348 mm |

Note: The operational system may protrude on some whirl systems.
Please refer to the Technical Information for Whirl Systems for further information.
Subject to technical alterations, tolerances and errors. Similar illustration.
** 70 litres displacement on average.

KALDEWEI