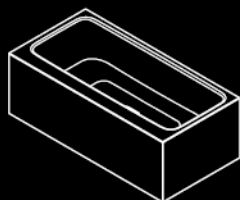


## MEISTERSTÜCK

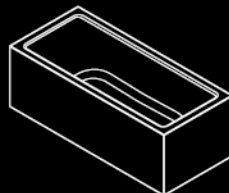
### ASYMMETRIC DUO



### CENTRO DUO OVAL



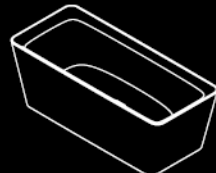
### CONODUO



### EMERSO



### INCAVA



### CLASSIC DUO OVAL



# 2

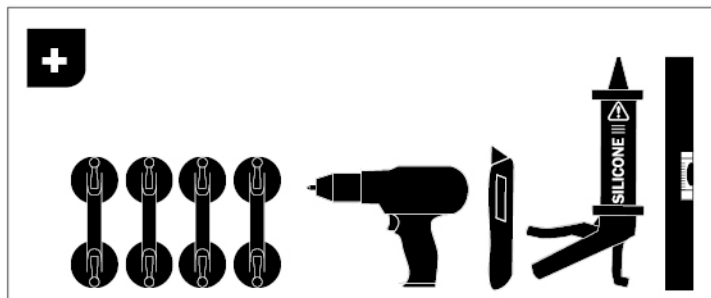
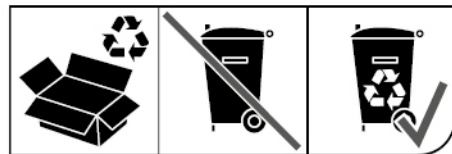
## DE Montageanleitung | EN Installation instructions

NL Montagehandleiding | FR Instructions de montage | IT Istruzioni di montaggio  
ES Instrucciones de montaje | PT Instruções de montagem | DA Monteringsvejledning  
NO Monteringsanvisning | SV Monteringsanvisning | FI Asennusohje | ET Paigaldusjuhised  
LV Montāžas instrukcija | LT Montavimo instrukcija | PL Instrukcja montażu | CS Návod k montáži  
RU Инструкция по монтажу | UK Інструкція з монтажу | SK Návod na montáž | HU Összeszerelési utasítás  
RO Instrucțiuni de montare | SL Navodila za montažo | HR Upute za montažu  
BG Ръководство за монтаж | EL Οδηγίες συναρμολόγησης | TR Montaj talimatı | AR بيكرتلا ليلد  
ZH 安装说明书 | JA 設置説明書 | KO 조립설명서 | ID Petunjuk perakitan | TH คำแนะนำในการติดตั้ง  
VI Hướng dẫn lắp ráp | HI स्थापना निर्देश

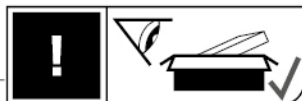
# 1.



# 2.



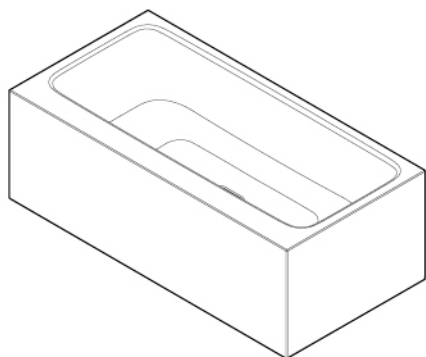
CE 13 KBW 001



## ASYMMETRIC DUO

1740

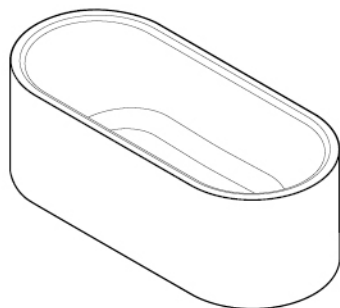
1742



## CENTRO DUO OVAL

1127

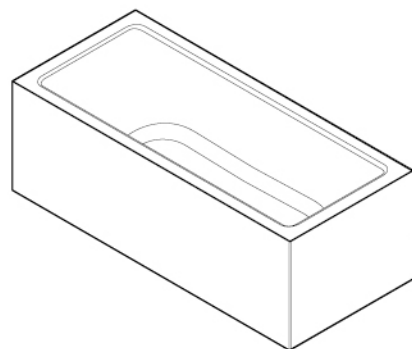
1128



## CONODUO

1732

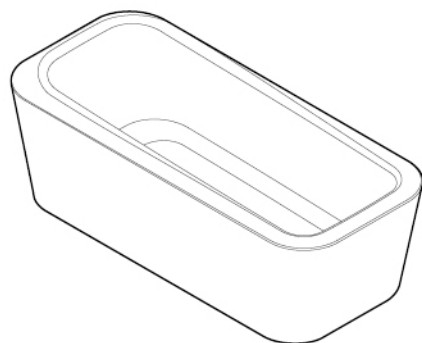
1733





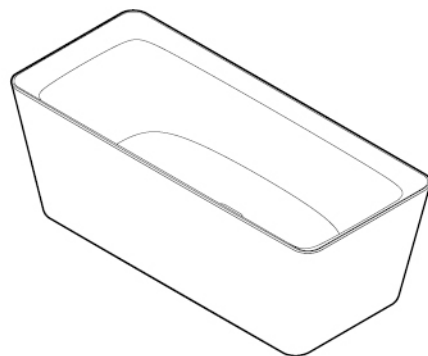
**EMERSO**

**1100**



**INCAVA**

**1174**



# MEISTERSTÜCK

## CLASSIC DUO OVAL

1111

1113

1112



616202

616201

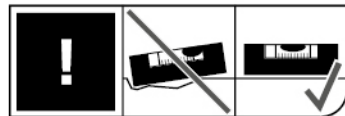
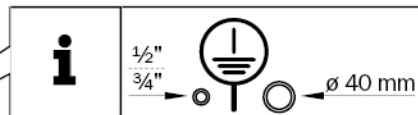
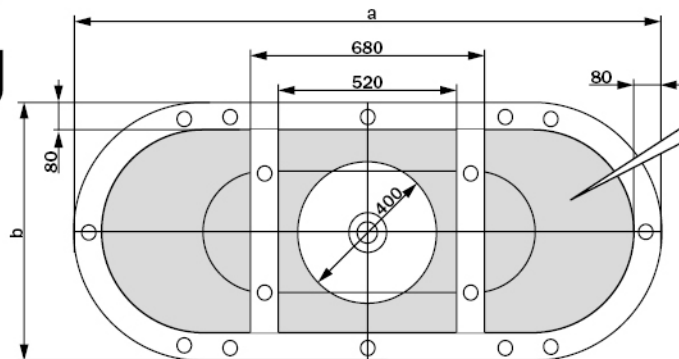
616102

616101





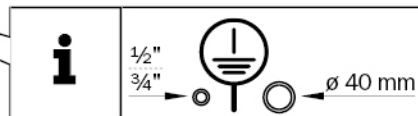
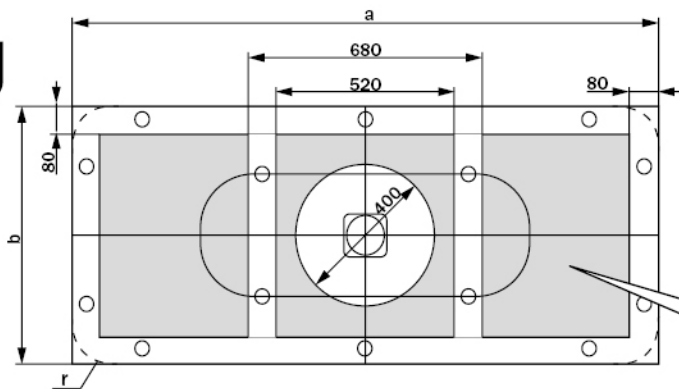
**A**

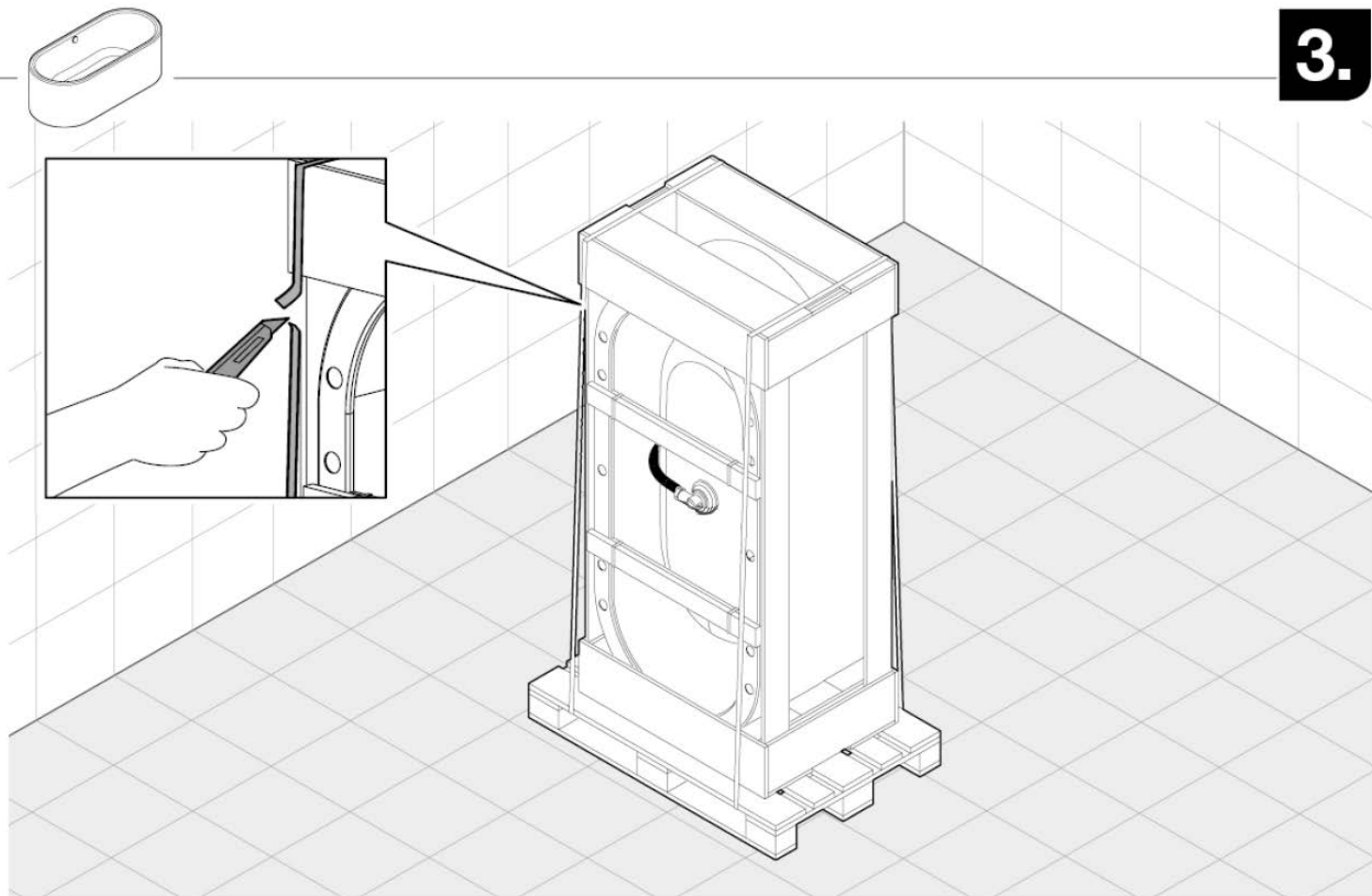


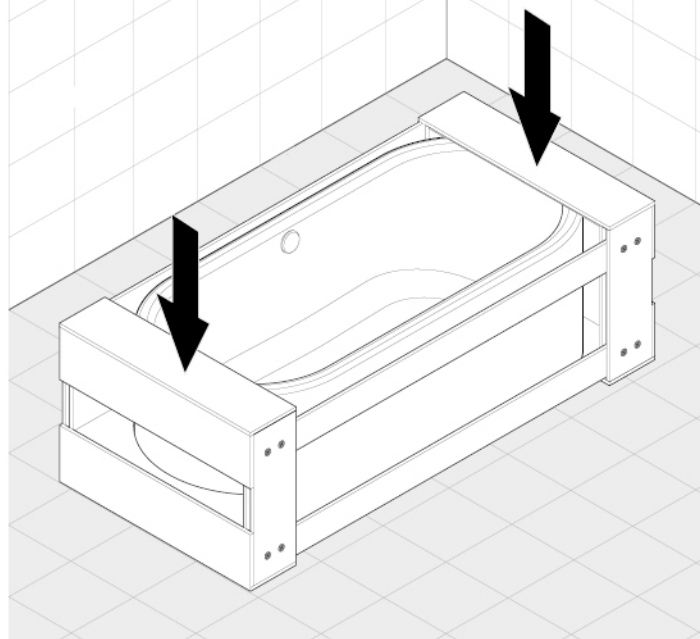
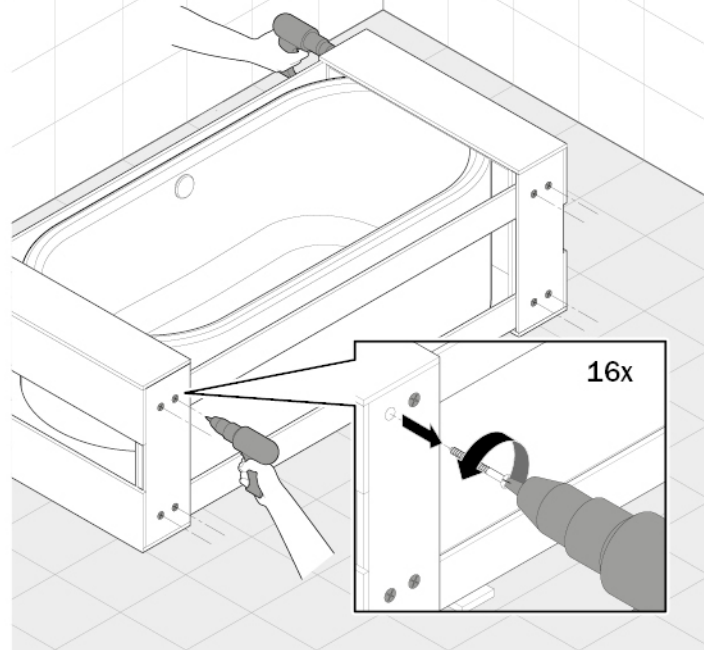
	a mm	b mm	r mm
<b>1740</b>	1700	800	-
<b>1742</b>	1800	900	-
<b>1127</b>	1700	750	375
<b>1128</b>	1800	800	400
<b>1732</b>	1700	750	-
<b>1733</b>	1800	800	-
<b>1100</b>	1600	710	200
<b>1174</b>	1493	643	80
<b>1113</b>	1418	643	321,5
<b>1111</b>	1518	693	346,5

Inch = mm x 0,0394

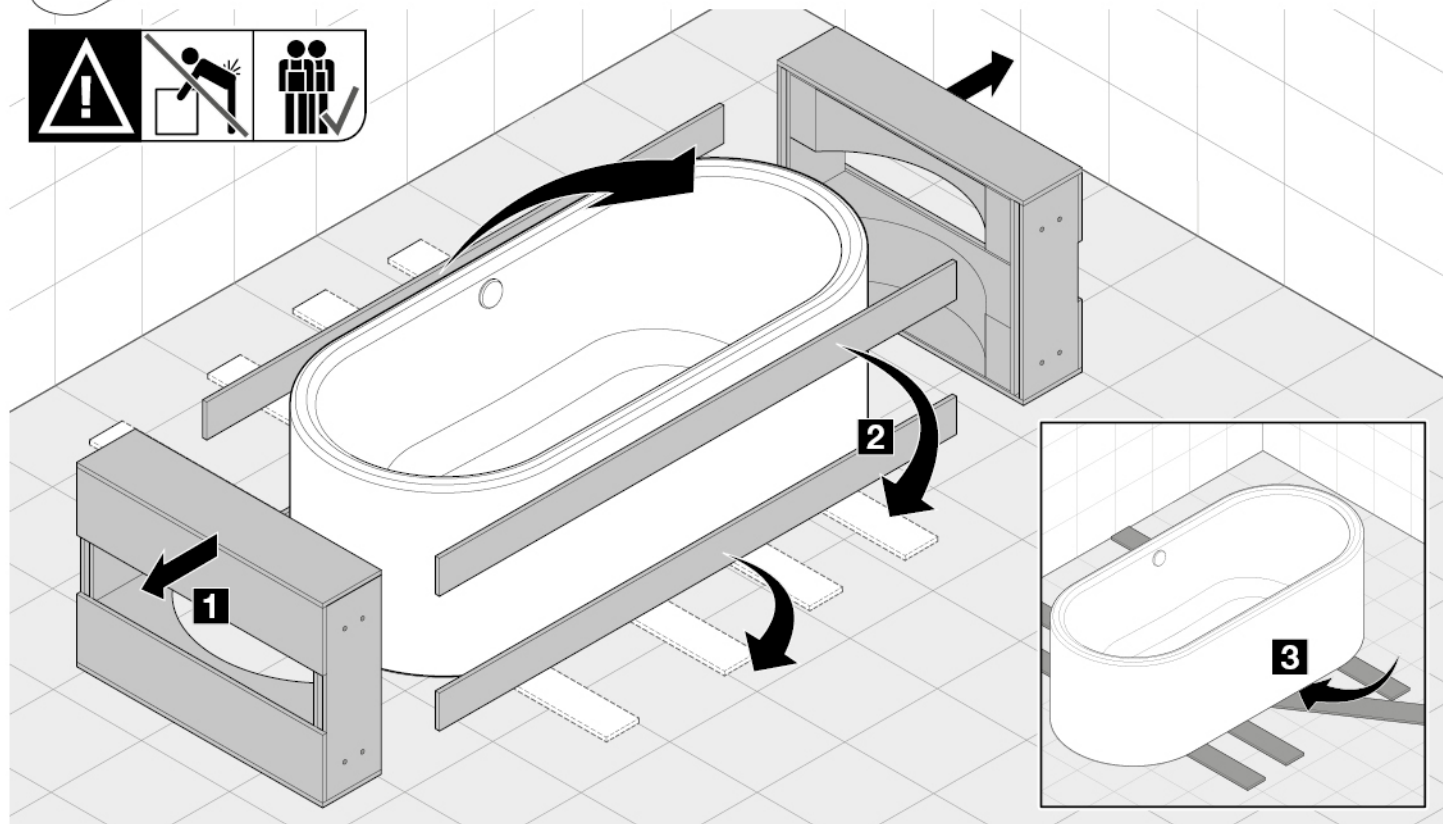
**B**

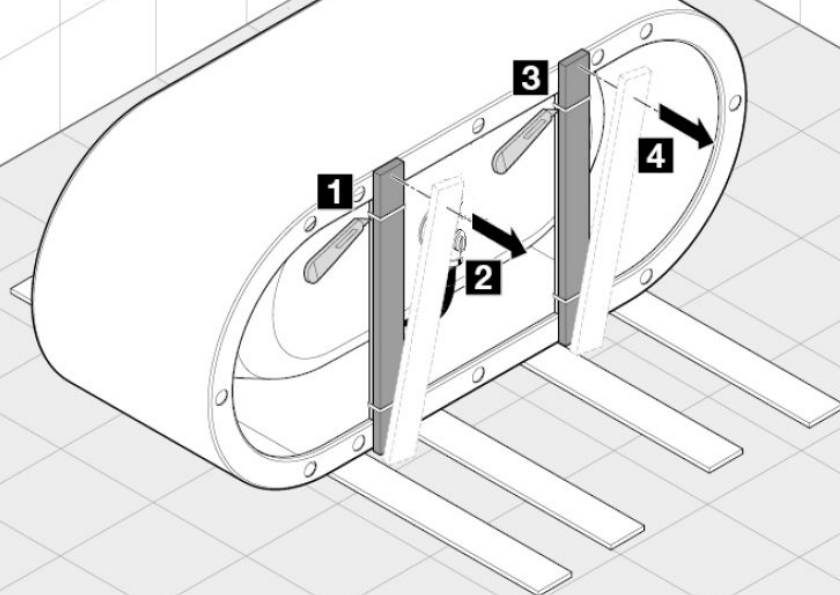
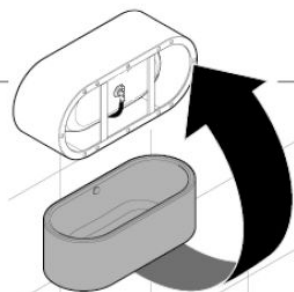


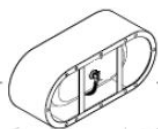


**4.****5.**

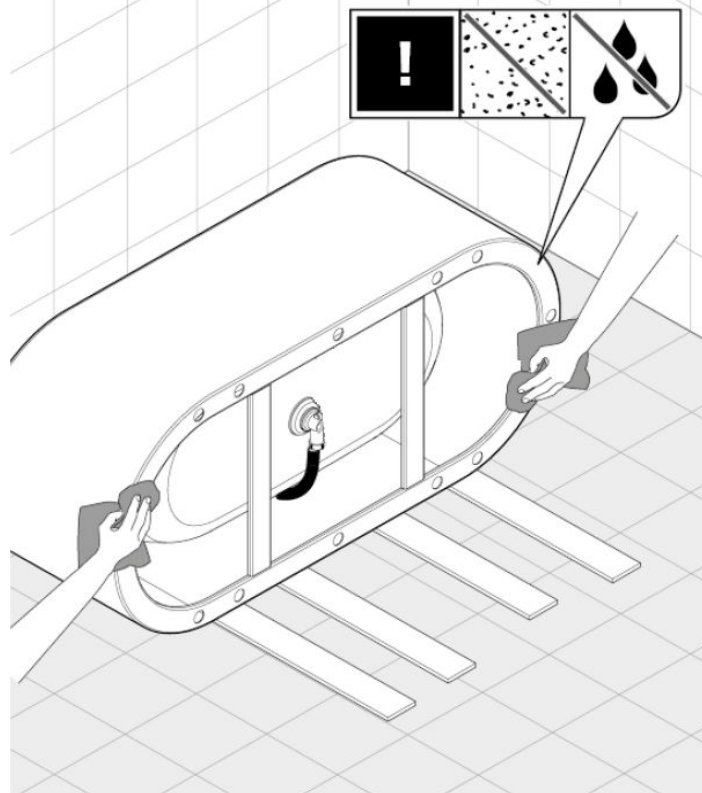




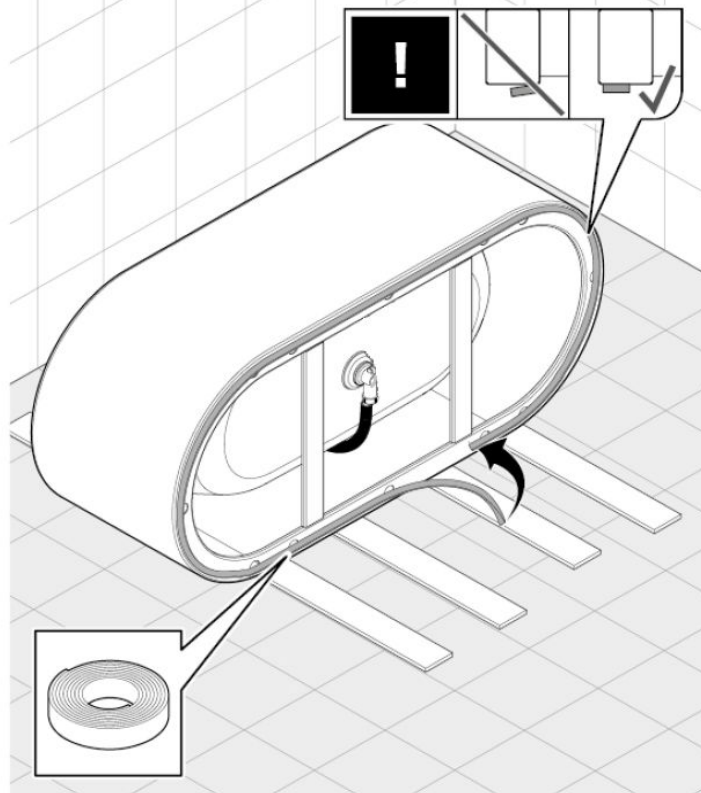


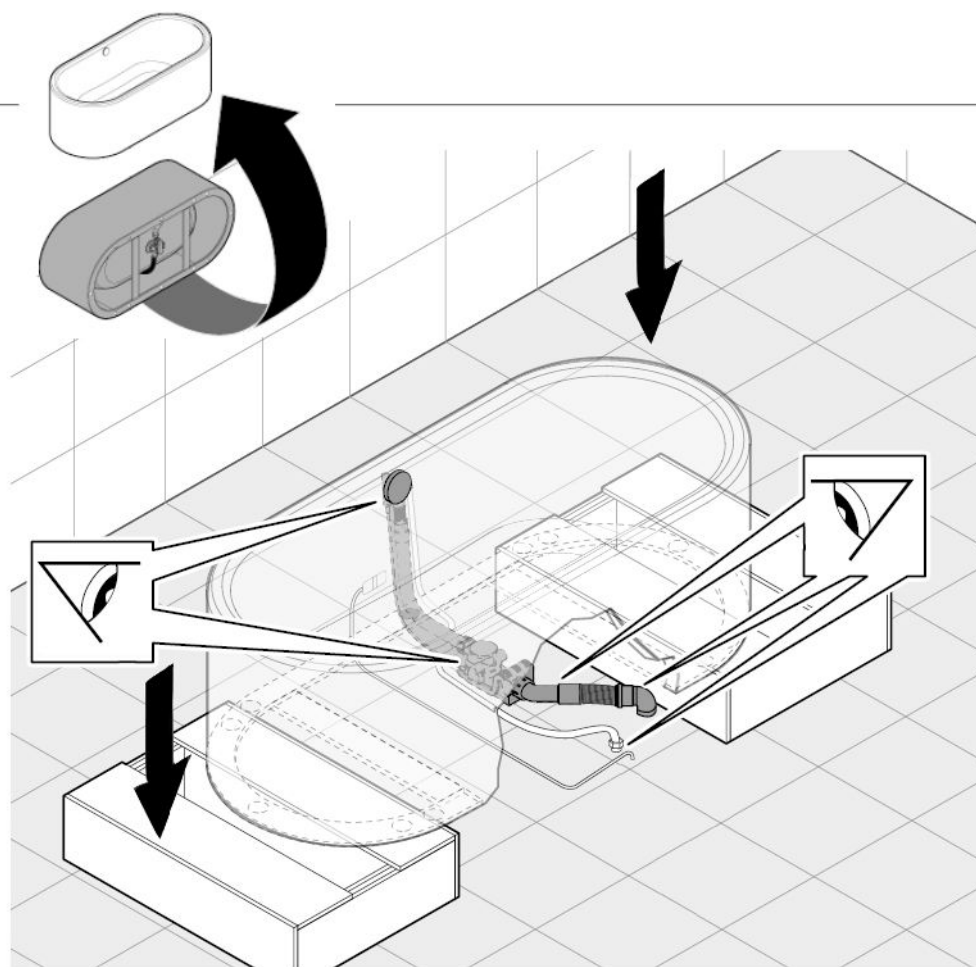


8.

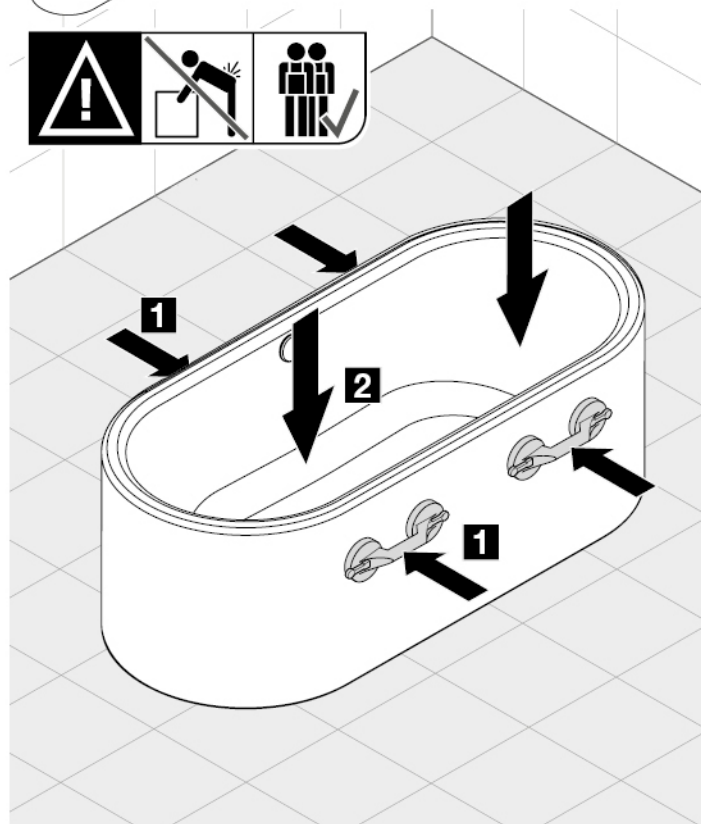
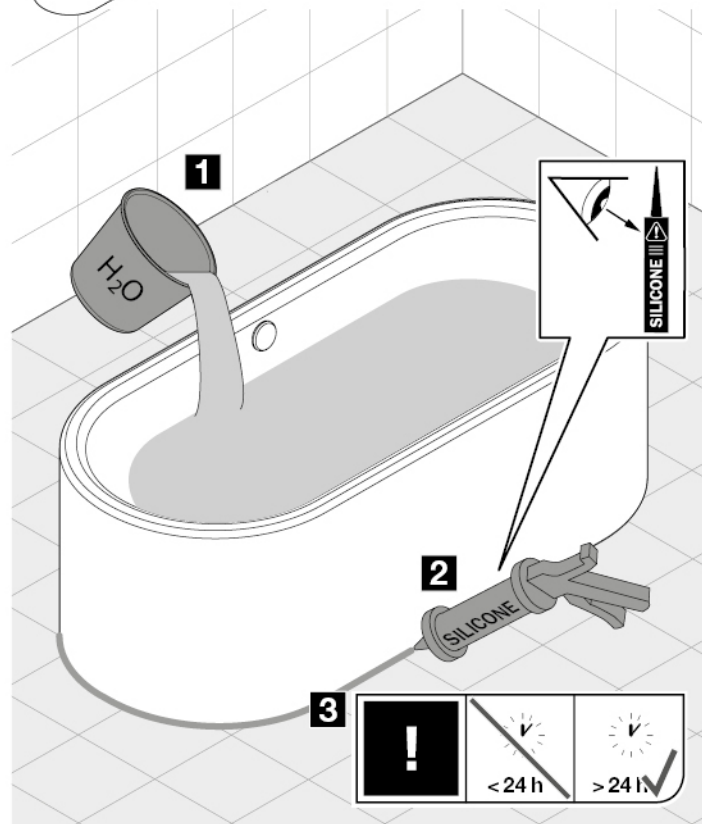


9.





**\*\*THE WASTE FITTINGS PICTURED ARE NOT APPLICABLE IN AUSTRALIA. PLEASE SEE PAGE 15 FOR AU APPROVED OVERFLOW AND WASTE FITTINGS.**

**11.****12.**


# KALDEWEI



Franz Kaldewei GmbH & Co. KG

Beckumer Str. 33-35

D-59229 Ahlen

 +49 2382 785 0

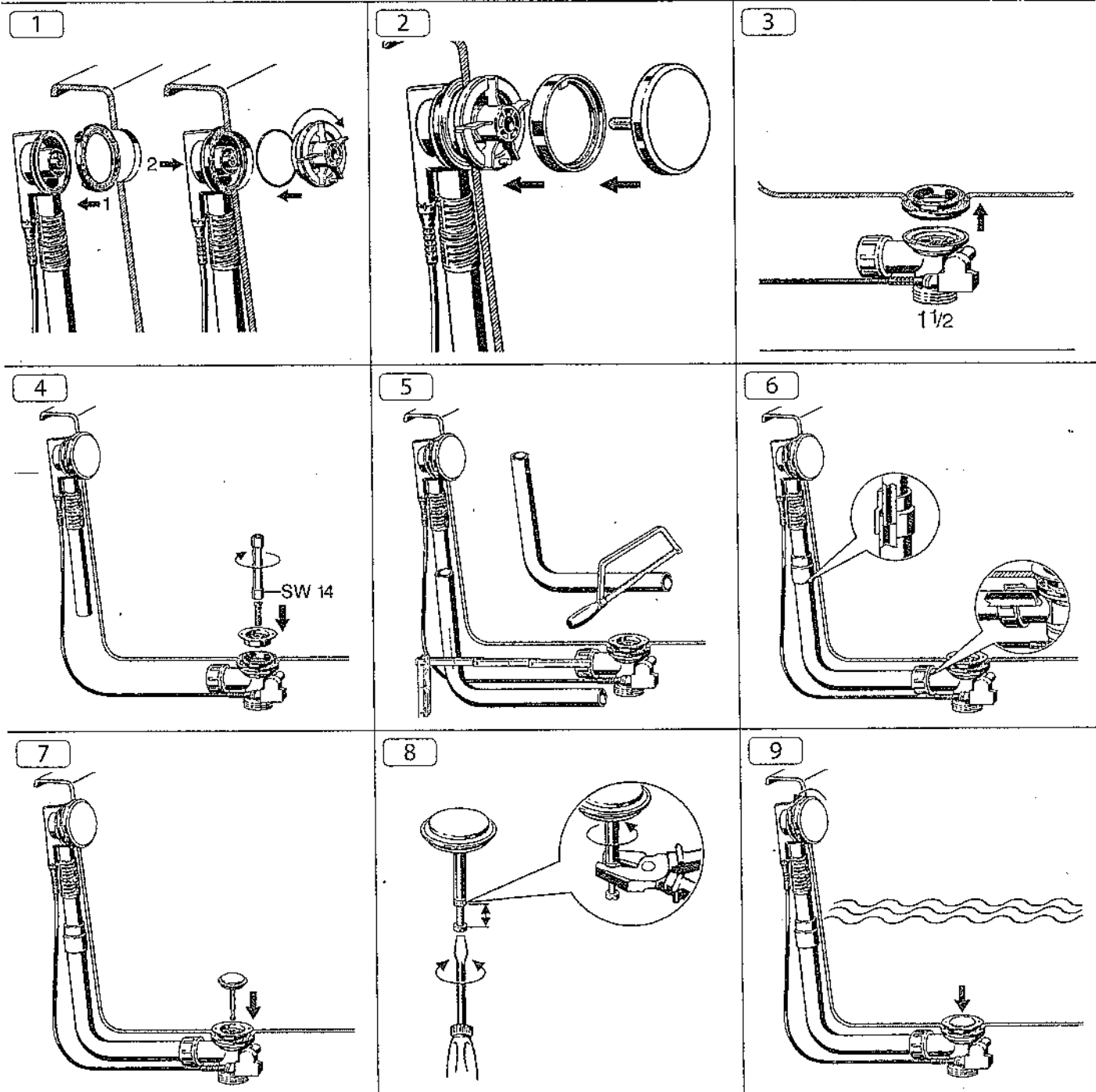
 +49 2382 785 200

[www.kaldewei.com](http://www.kaldewei.com)

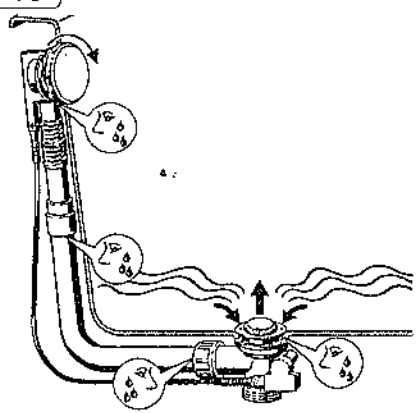
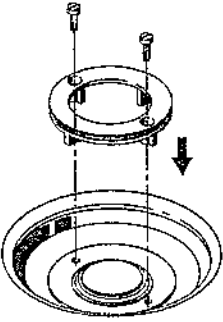
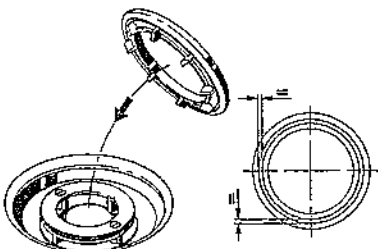
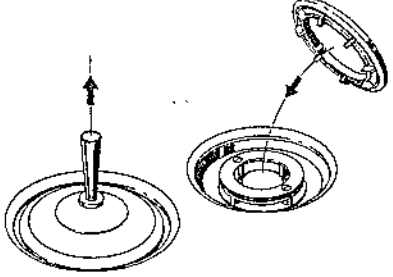
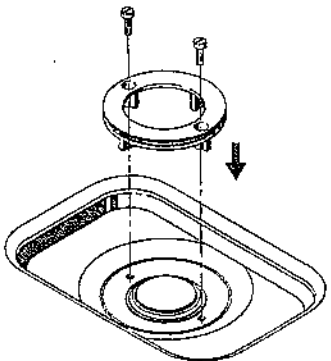
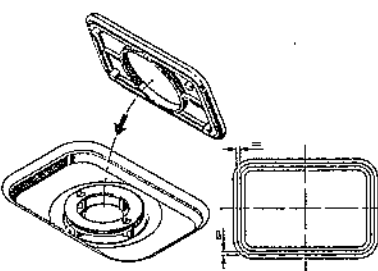
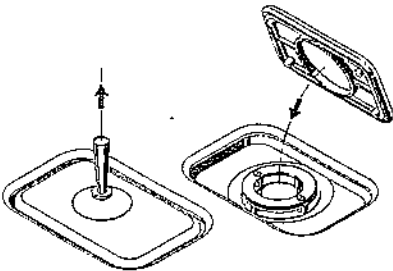


AUSTRALIA APPROVED  
WASTE AND OVERFLOW  
FITTINGS

## EINBAUANLEITUNG / INSTALLATION INSTRUCTIONS AB- UND ÜBERLAUFGARNITUR / DRAIN AND OVERFLOW FITTINGS MOD. KA 4040 AUSTRALIA MOD. KA 4060 AUSTRALIA MOD. KA 4080 AUSTRALIA





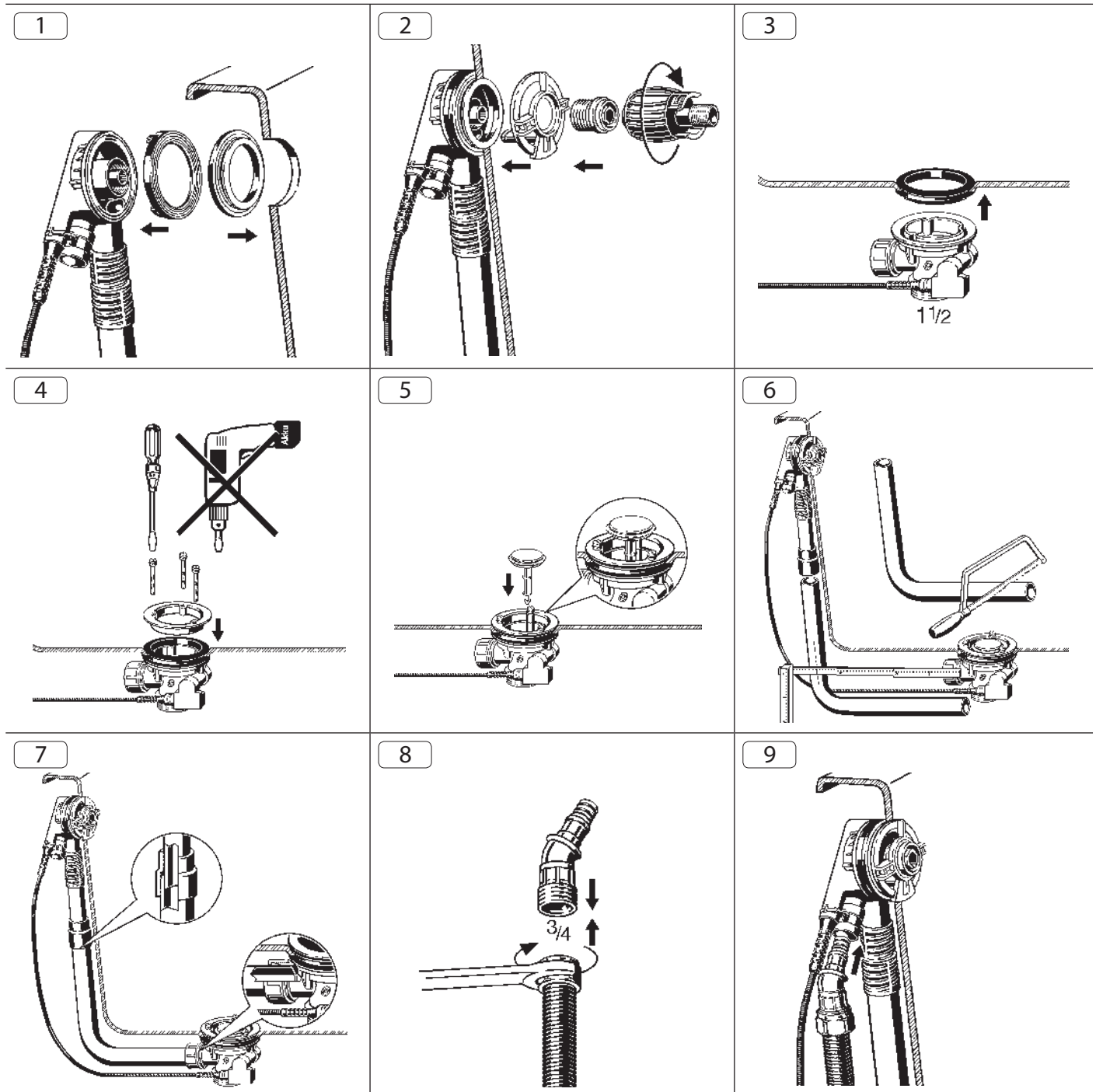
<p>10</p> 		
<p>11a</p> <p>4040</p> 	<p>12a</p> <p>4040</p> 	<p>13a</p> <p>4040</p> 
<p>11b</p> <p>4060</p> 	<p>12b</p> <p>4060</p> 	<p>13b</p> <p>4060</p> 

## EINBAUANLEITUNG / INSTALLATION INSTRUCTIONS AB- UND ÜBERLAUFGARNITUR MIT INTEGRIERTEM EINLAUF/ DRAIN AND OVERFLOW FITTINGS WITH INTEGRATED INLET

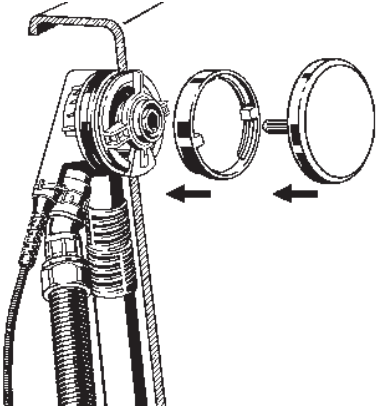
MOD. KA 4041 AUSTRALIA

MOD. KA 4061 AUSTRALIA

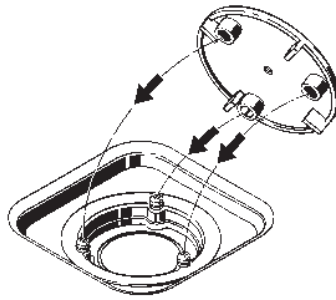
MOD. KA 4081 AUSTRALIA



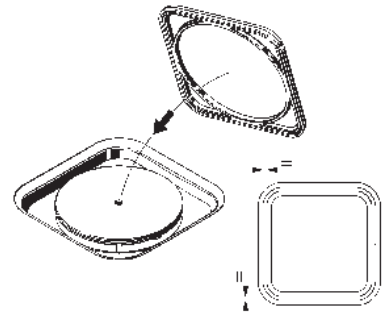
10



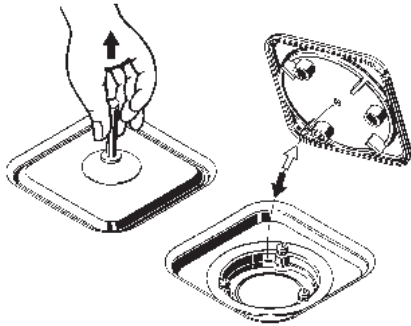
11



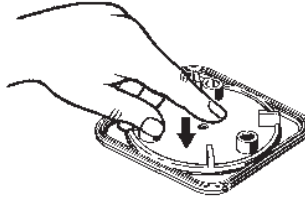
12



13



14



15

