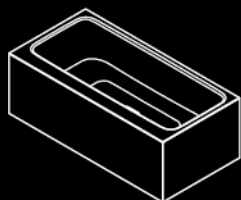


## MEISTERSTÜCK

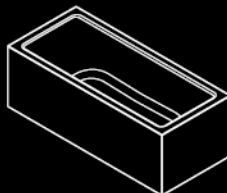
### ASYMMETRIC DUO



### CENTRO DUO OVAL



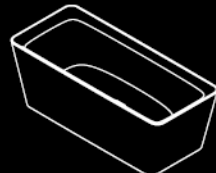
### CONODUO



### EMERSO



### INCAVA



### CLASSIC DUO OVAL



# 2

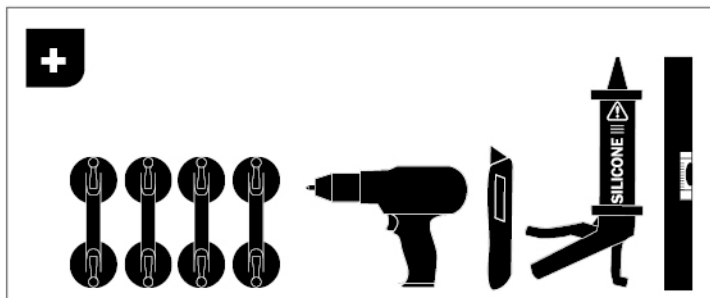
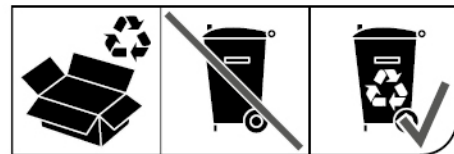
## DE Montageanleitung | EN Installation instructions

NL Montagehandleiding | FR Instructions de montage | IT Istruzioni di montaggio  
ES Instrucciones de montaje | PT Instruções de montagem | DA Monteringsvejledning  
NO Monteringsanvisning | SV Monteringsanvisning | FI Asennusohje | ET Paigaldusjuhised  
LV Montāžas instrukcija | LT Montavimo instrukcija | PL Instrukcja montażu | CS Návod k montáži  
RU Инструкция по монтажу | UK Інструкція з монтажу | SK Návod na montáž | HU Összeszerelési utasítás  
RO Instrucțiuni de montare | SL Navodila za montažo | HR Upute za montažu  
BG Ръководство за монтаж | EL Οδηγίες συναρμολόγησης | TR Montaj talimatı | AR بيكرتلا ليلد  
ZH 安装说明书 | JA 設置説明書 | KO 조립설명서 | ID Petunjuk perakitan | TH คำแนะนำในการติดตั้ง  
VI Hướng dẫn lắp ráp | HI स्थापना निर्देश

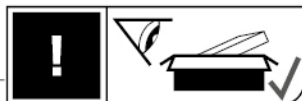
# 1.



# 2.



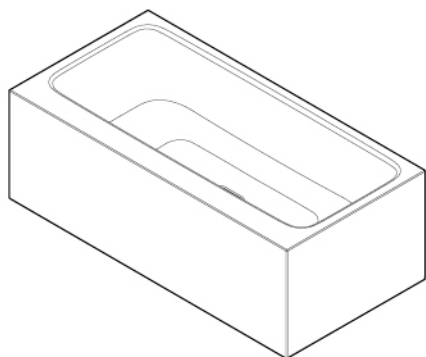
CE 13 KBW 001



## ASYMMETRIC DUO

1740

1742



## CENTRO DUO OVAL

1127

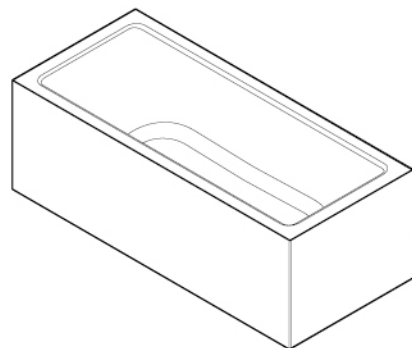
1128



## CONODUO

1732

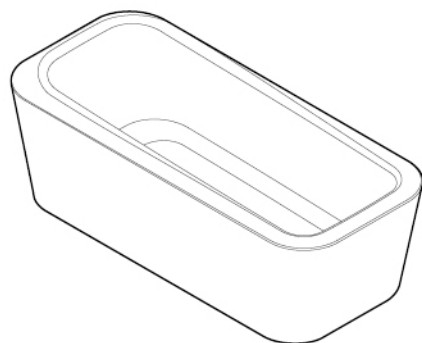
1733





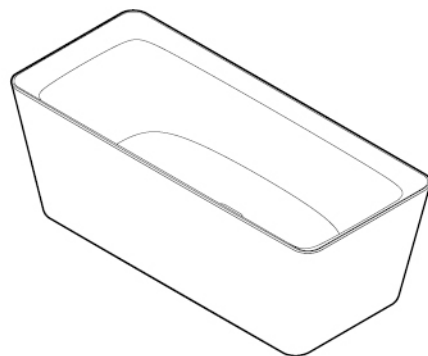
**EMERSO**

**1100**



**INCAVA**

**1174**



# MEISTERSTÜCK

## CLASSIC DUO OVAL

1111

1113

1112



616202

616201

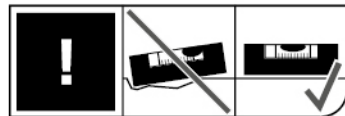
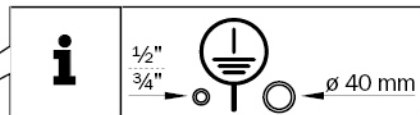
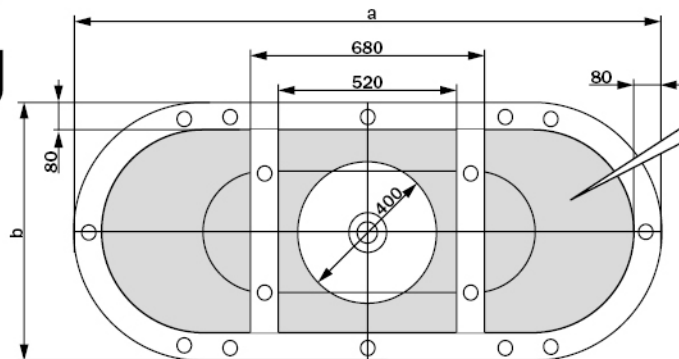
616102

616101





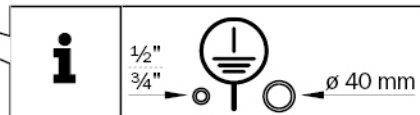
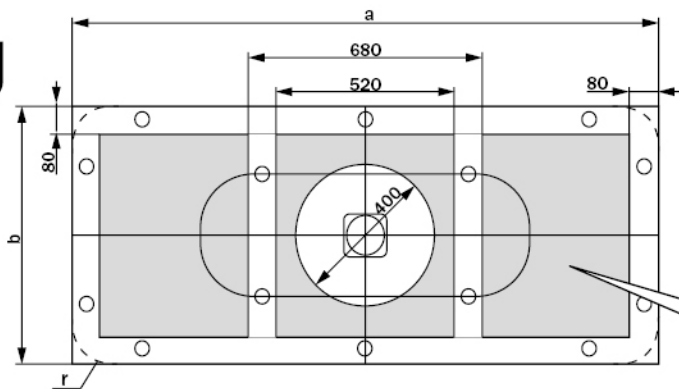
**A**

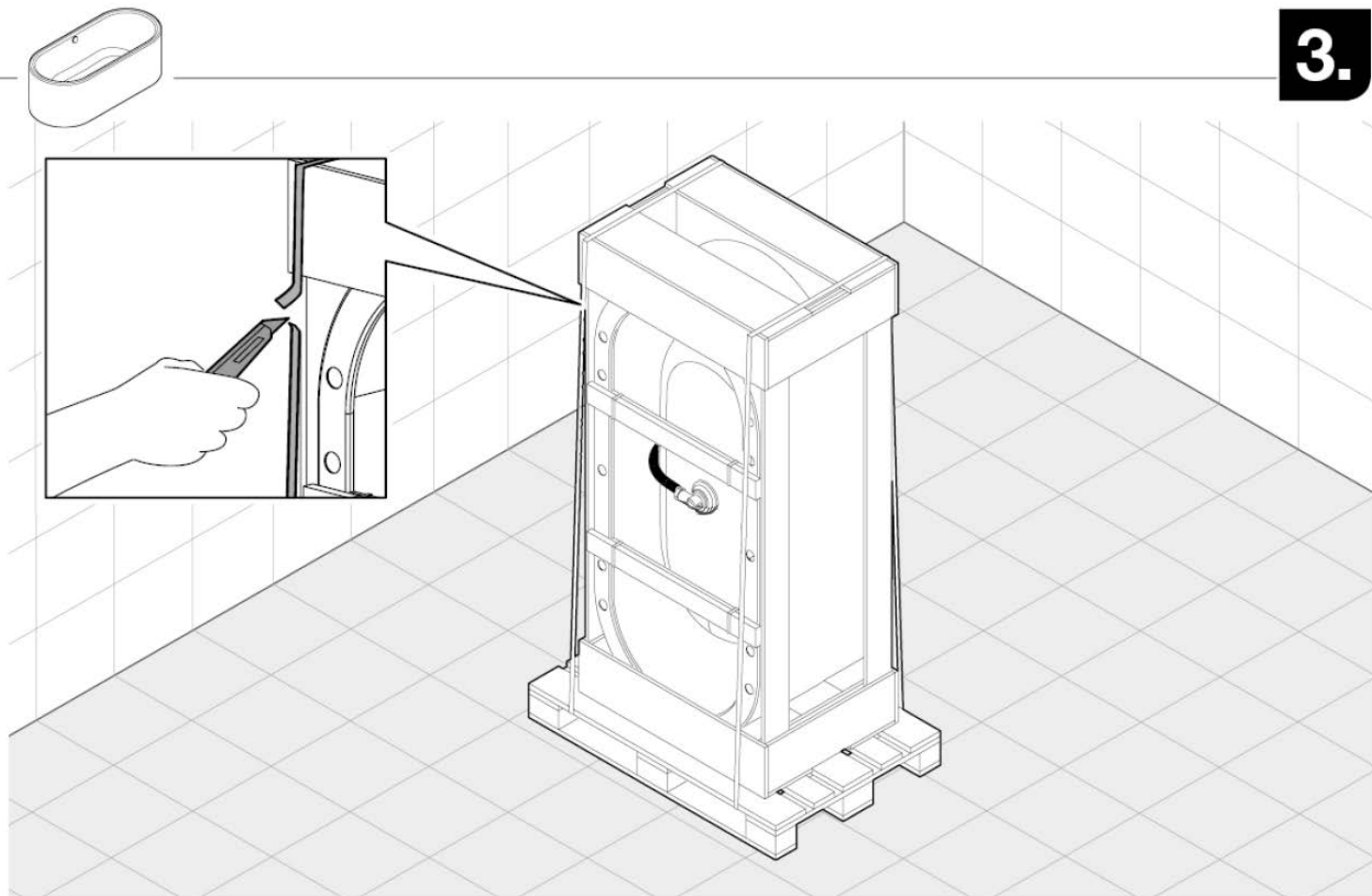


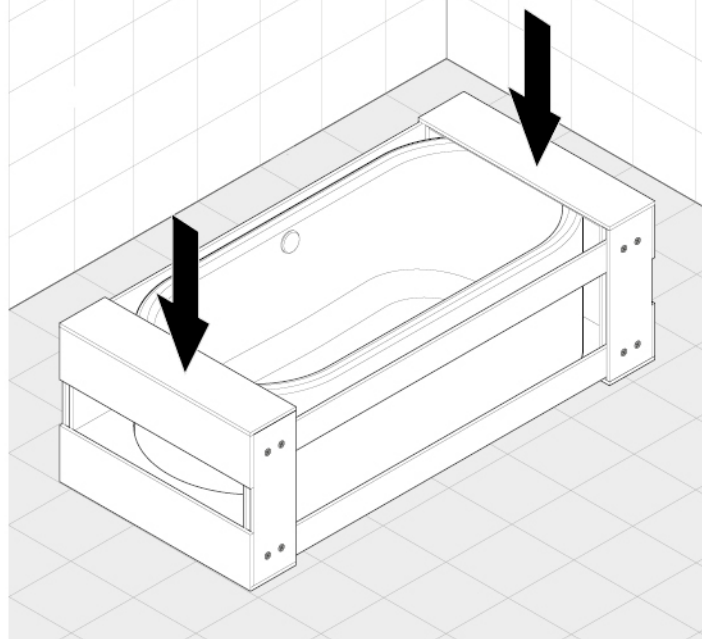
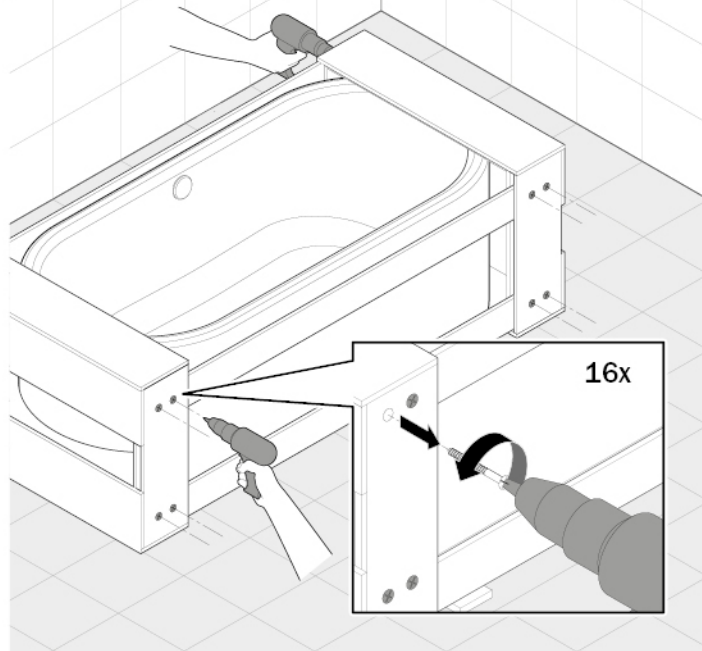
|             | a mm | b mm | r mm  |
|-------------|------|------|-------|
| <b>1740</b> | 1700 | 800  | -     |
| <b>1742</b> | 1800 | 900  | -     |
| <b>1127</b> | 1700 | 750  | 375   |
| <b>1128</b> | 1800 | 800  | 400   |
| <b>1732</b> | 1700 | 750  | -     |
| <b>1733</b> | 1800 | 800  | -     |
| <b>1100</b> | 1600 | 710  | 200   |
| <b>1174</b> | 1493 | 643  | 80    |
| <b>1113</b> | 1418 | 643  | 321,5 |
| <b>1111</b> | 1518 | 693  | 346,5 |

Inch = mm x 0,0394

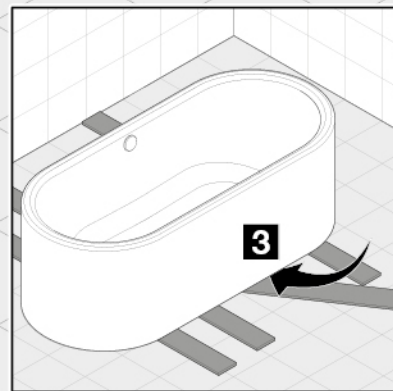
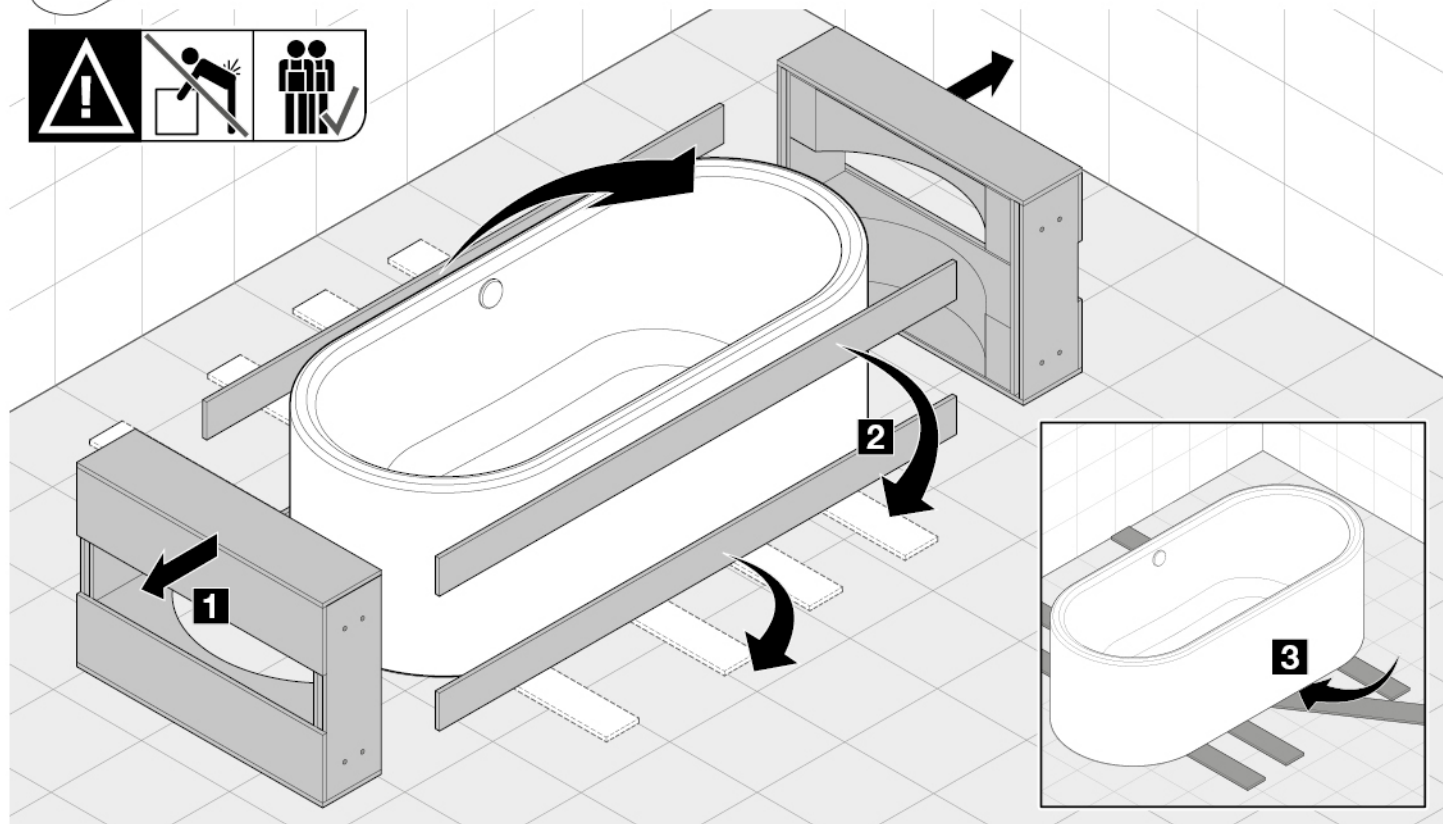
**B**

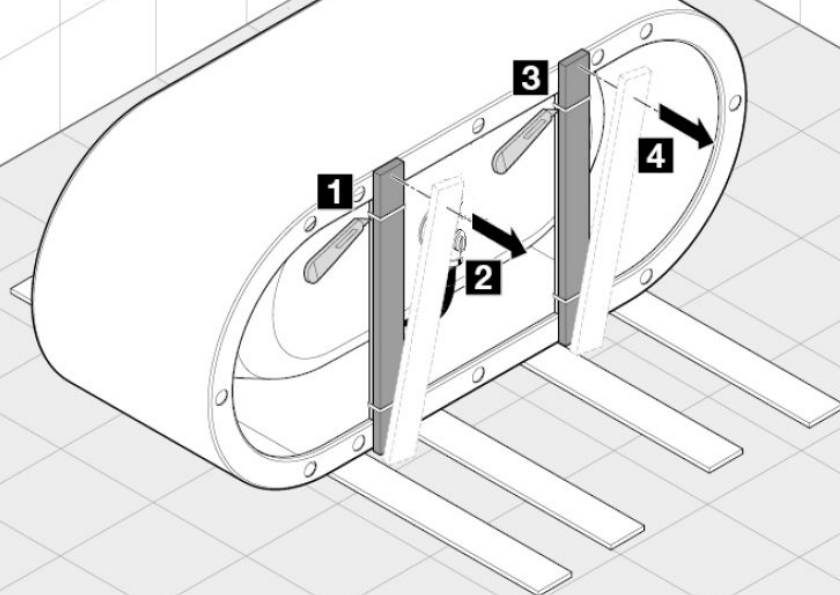
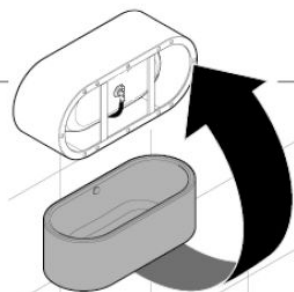


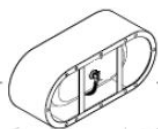


**4.****5.**

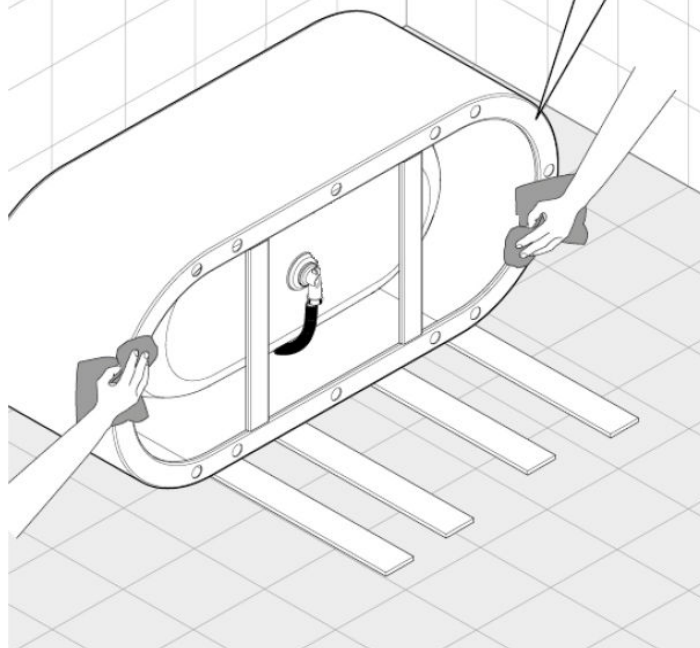
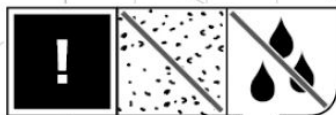




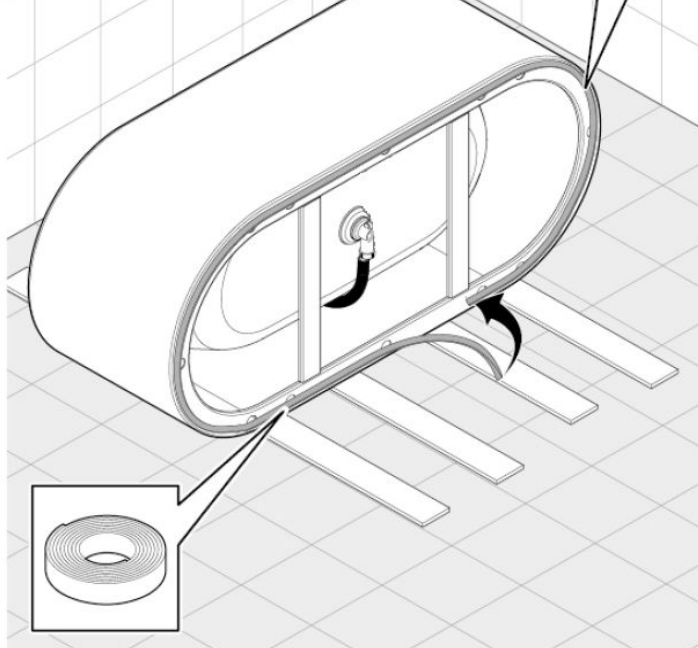


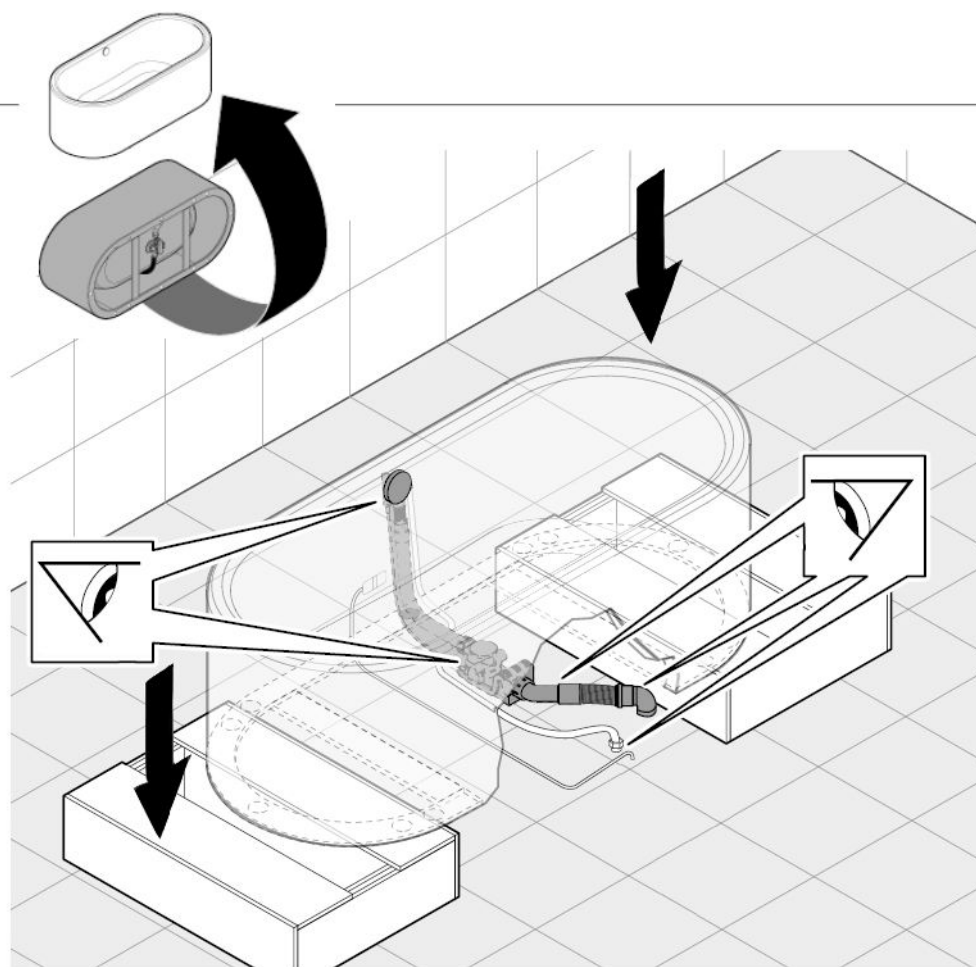


8.

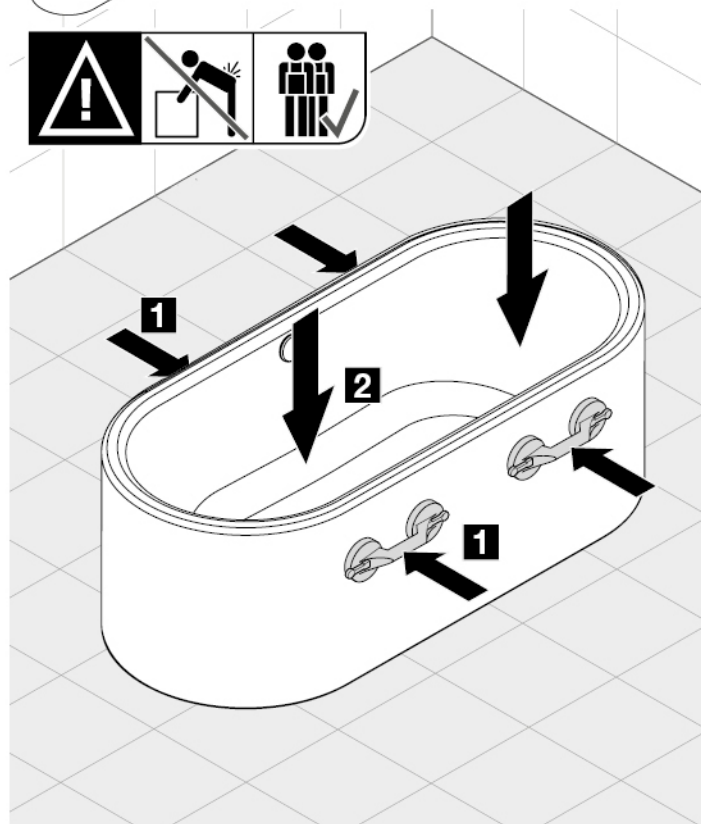
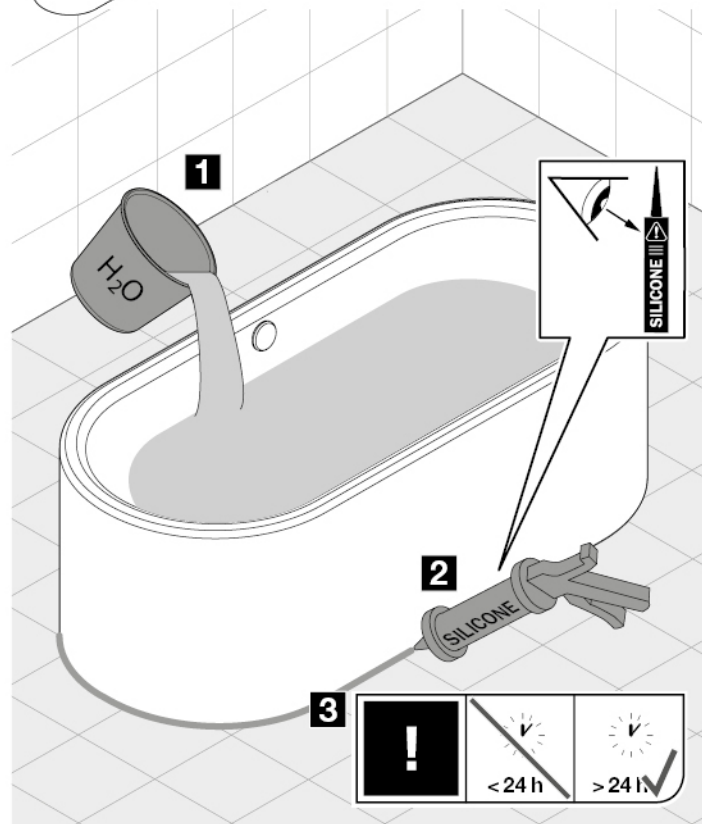


9.





**\*\*THE WASTE FITTINGS PICTURED ARE NOT APPLICABLE IN AUSTRALIA. PLEASE SEE PAGE 15 FOR AU APPROVED OVERFLOW AND WASTE FITTINGS.**

**11.****12.**


# KALDEWEI



Franz Kaldewei GmbH & Co. KG

Beckumer Str. 33-35

D-59229 Ahlen

 +49 2382 785 0

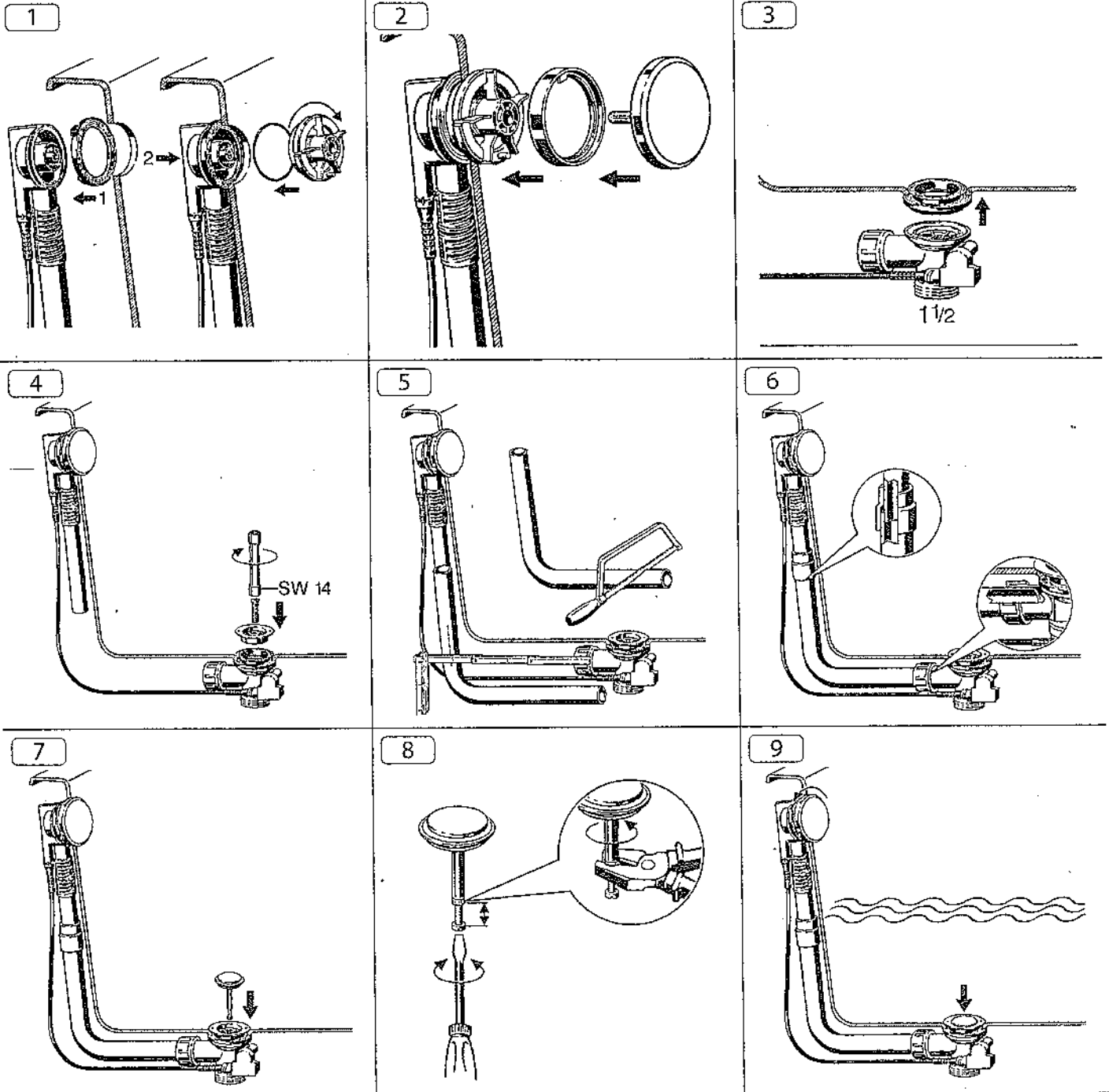
 +49 2382 785 200

[www.kaldewei.com](http://www.kaldewei.com)

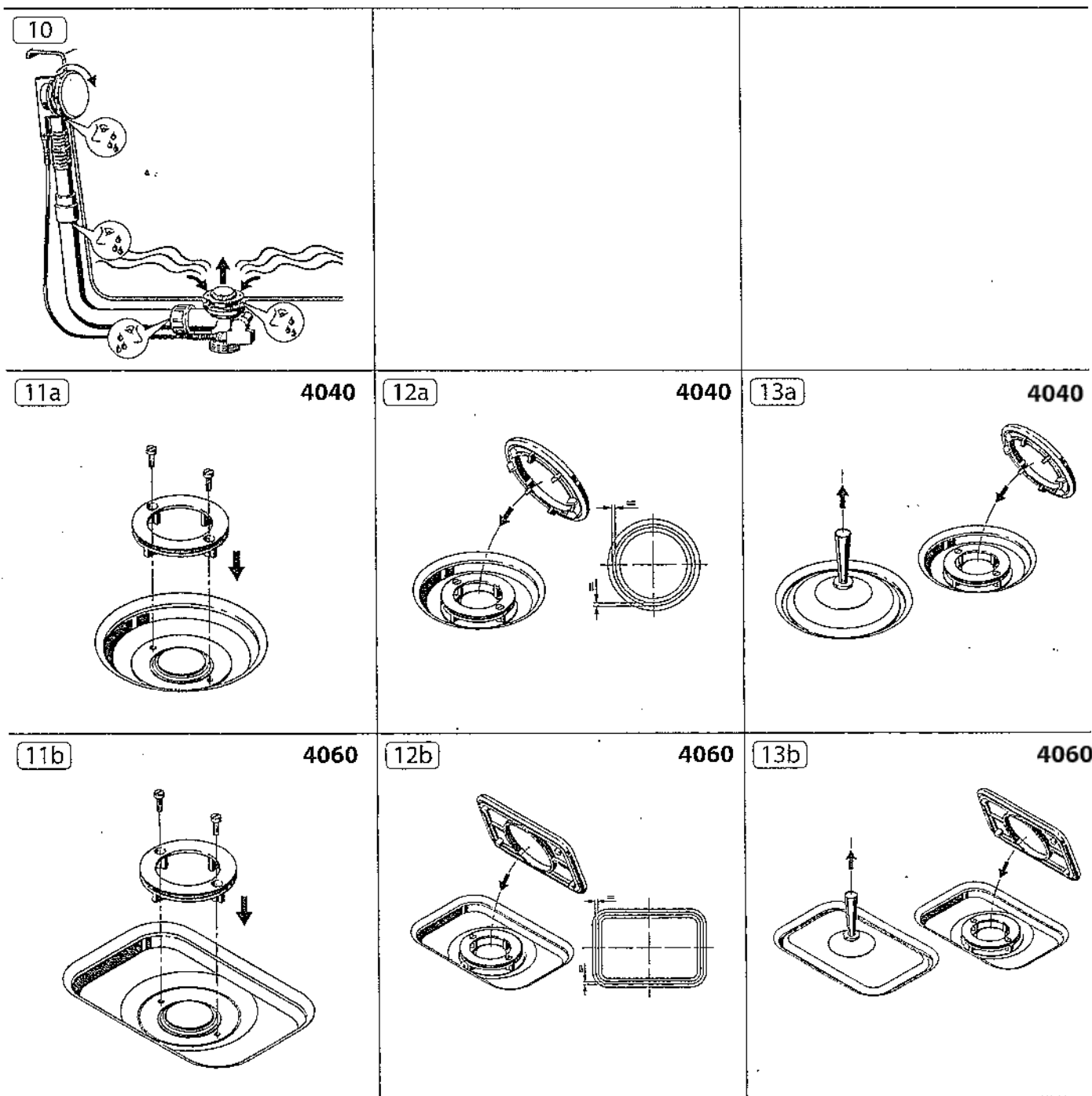


AUSTRALIA APPROVED  
WASTE AND OVERFLOW  
FITTINGS

## EINBAUANLEITUNG / INSTALLATION INSTRUCTIONS AB- UND ÜBERLAUFGARNITUR / DRAIN AND OVERFLOW FITTINGS MOD. KA 4040 AUSTRALIA MOD. KA 4060 AUSTRALIA MOD. KA 4080 AUSTRALIA





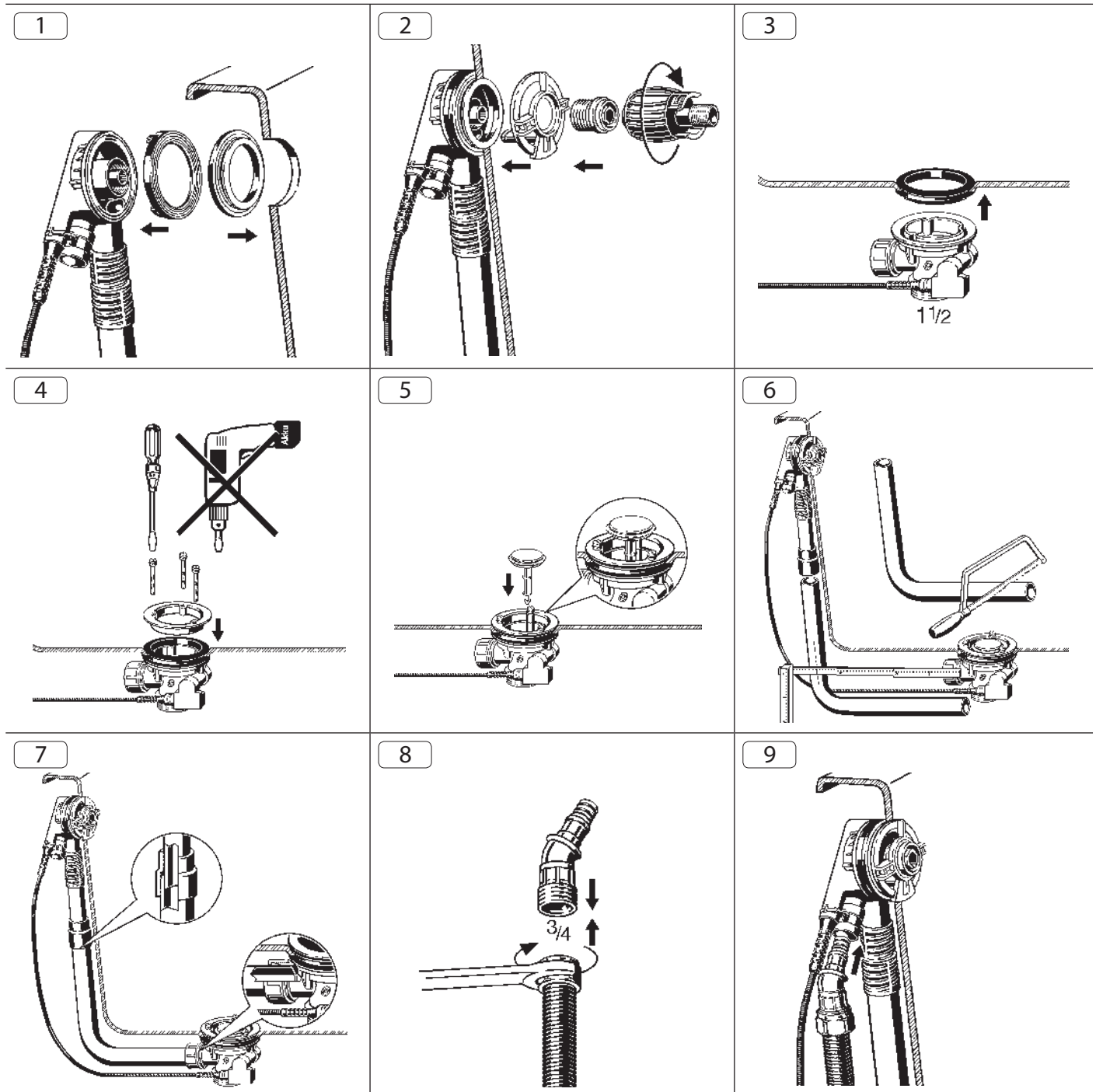


## EINBAUANLEITUNG / INSTALLATION INSTRUCTIONS AB- UND ÜBERLAUFGARNITUR MIT INTEGRIERTEM EINLAUF/ DRAIN AND OVERFLOW FITTINGS WITH INTEGRATED INLET

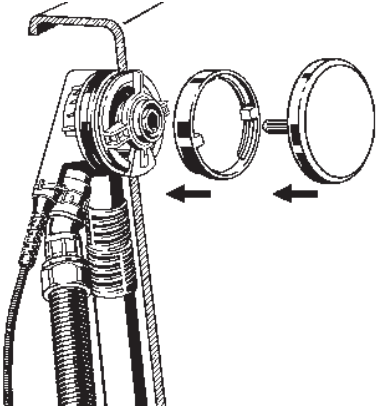
MOD. KA 4041 AUSTRALIA

MOD. KA 4061 AUSTRALIA

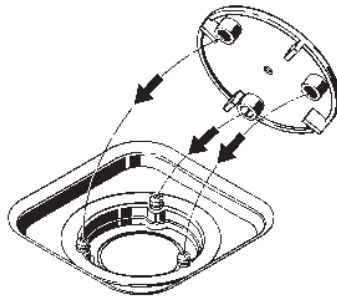
MOD. KA 4081 AUSTRALIA



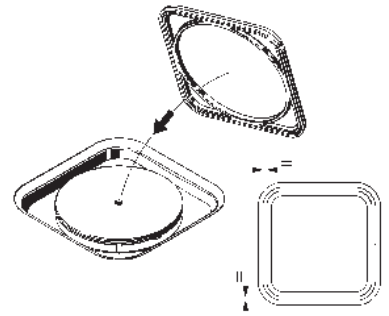
10



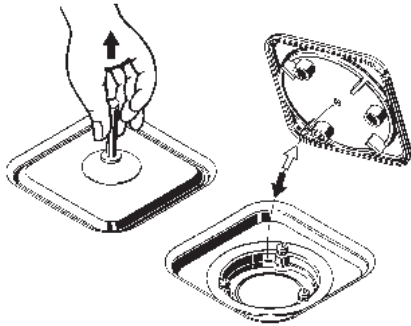
11



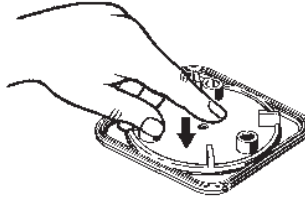
12



13



14



15

