

WARRANTY

PARISI offer a lengthy and comprehensive warranty against manufacturing defects, which is in addition to that required under Australian Consumer Law.

Please refer to our website for full warranty terms and conditions:
<https://parisi.com.au/pages/warranty-information>

CONDITIONS THAT WILL VOID THE WARRANTY

- Inability to provide a proof of purchase.
- Installation by an unlicensed plumber.
- Installation not adhering to these written instructions.
- Not following the cleaning and care instructions indicated in this booklet.

Thank you for purchasing our product!

Please follow the instructions in this manual carefully.
Please keep the manual properly stored for future reference.
Regarding future product updates, the product is subject to change without prior notice.

Illustrations in this manual serve as visual demonstration.

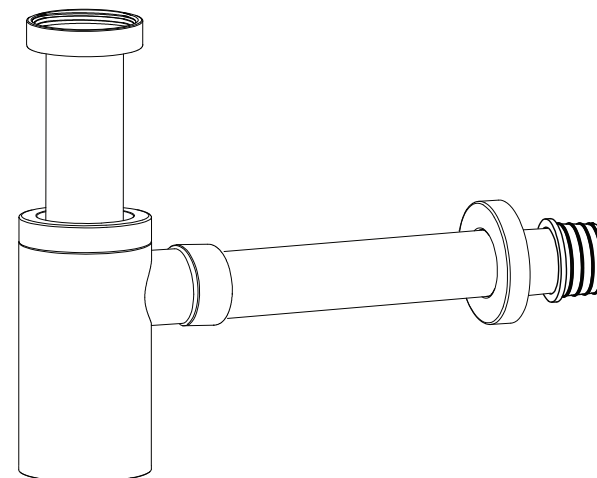
In order to guarantee that the product will always function optimally, and to ensure your personal safety, please read and follow these installation instructions carefully before starting.

Product Registration:

Save yourself time and enjoy peace of mind by registering your new PARISI product directly with PARISI.
Simply scan the QR code below and fill in the online form.

**BOTTLE TRAP**

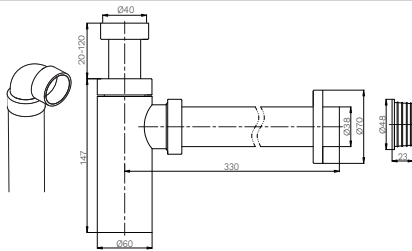
TA33240



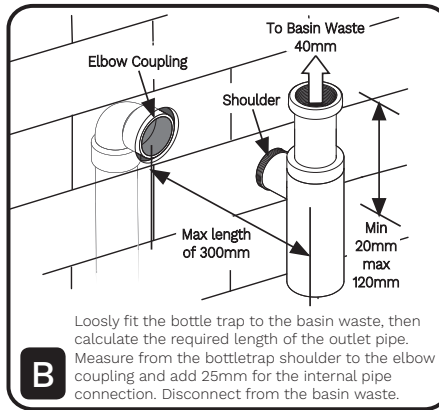
INSTALLATION

NOTE:

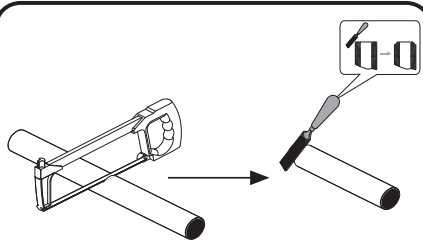
Please ensure there is a minimum of 1.5° fall in the waste outlet pipe when installed to allow waste water to flow.



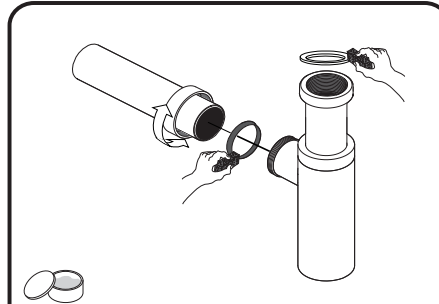
A In preparation of installation of the bottle trap please allow for a socket in the wall in order to fit the keeseal provided.



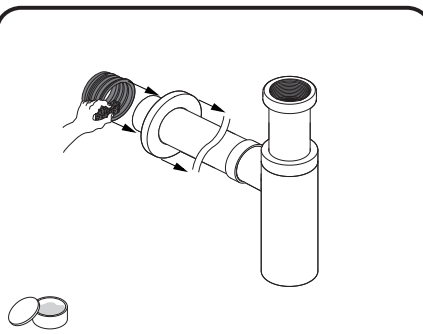
B Loosly fit the bottle trap to the basin waste, then calculate the required length of the outlet pipe. Measure from the bottletrap shoulder to the elbow coupling and add 25mm for the internal pipe connection. Disconnect from the basin waste.



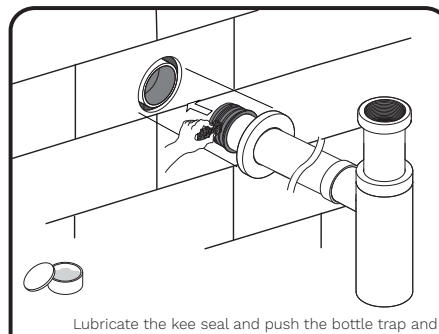
C Cut the outlet pipe to the length measured, and remove all swarf material from the end of the pipe.



D Lubricate the seals on the basin waste nut and the outlet seal. Slide the outlet pipe into the shoulder and tighten the outlet pipe retining nut.



E Slide the cover plate onto the outlet pipe. Lubricate the inside of the kee seal and push it onto the outlet pipe.



F Lubricate the kee seal and push the bottle trap and outlet pipe into the elbow coupling. Fit the bottle trap to the basin waste, and adjust the height to allow for flow of water. Test that all fittings are secure and free from leaks.

WARNING

Please read this installation guide carefully to avoid personal injury or property damage.

THIS BOTTLE TRAP MUST BE INSTALLED BY A LICENSED PLUMBER IN ACCORDANCE WITH AS/NZS 3500.1 PLUMBING STANDARDS.

SUPPLY LINES MUST BE FLUSHED PRIOR TO INSTALLATION TO REMOVE ANY FOREIGN MATTER.

CLEANING

Regular cleaning will maintain the bottle trap's lustre.

- ✓ Only use clean water to rinse and a soft cotton cloth to dry. Never use abrasive products (such as cleaners, cloths or paper) acidic detergent, harsh cleaners or soap.

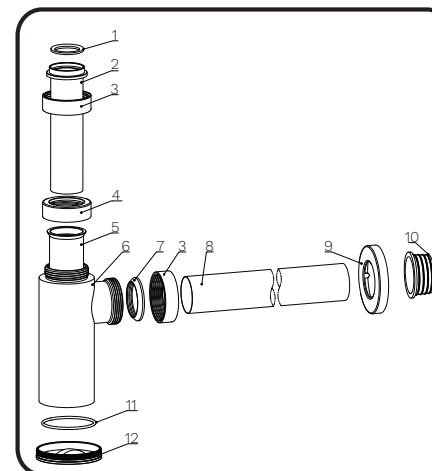
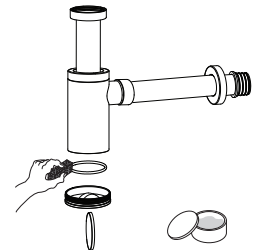
✓ = Soft Cotton Cloth

✗ = Acid, Strong Detergent



MAINTENANCE

Occasional maintenance is required to keep your bottle trap from getting blocked. Remove the inspection nut from under the bottle trap using a large flat screwdriver or coin. Make sure the O-ring remains intact. Clean all foreign debris from inside the trap, lubricate the o-ring and re-install the inspection nut.



TA33240 SPARE PARTS

NO.	DESCRIPTION	CODE
1	INLET PIPE O-RING	SPTA3301
2	INLET PIPE	SPTA3302
3	WASTE / BOTTLE TRAP OUTLET NUT	SPTA3303
4	BOTTLE TRAP INLET NUT	SPTA3304
5	PLASTIC WASTE TUBE	SPTA3305
6	BOTTLE TRAP	TA33240
7	OUTLET RUBBER SEAL	SPTA3306
8	OUTLET PIPE	SPTA3307
9	BACKPLATE	SPTA3308
10	KEESEAL	SPTA3309
11	INSPECTION NUT O-RING	SPTA3310
12	INSPECTION OPENING NUT	SPTA3311