

Please refer to our website for full warranty terms and conditions:

<https://parisi.com.au/pages/warranty-information>

THIS TAP MUST BE INSTALLED BY A LICENSED PLUMBER IN  
ACCORDANCE WITH LOCAL REGULATIONS

This PARISI tap is manufactured to standard AS/NZS 3718.

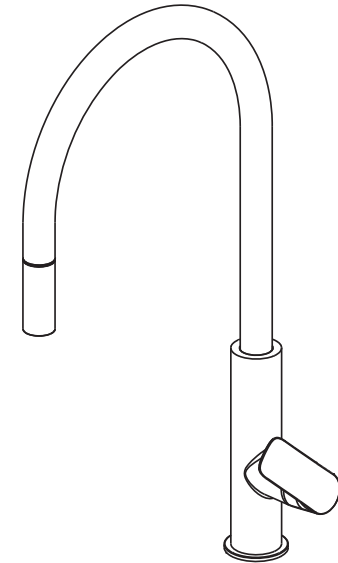
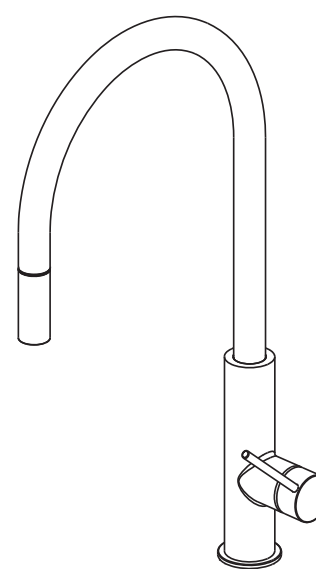
This product is to be installed by a licensed plumber, installation must comply with  
AS/NZS 3500 and local plumbing codes

#### Product Registration:

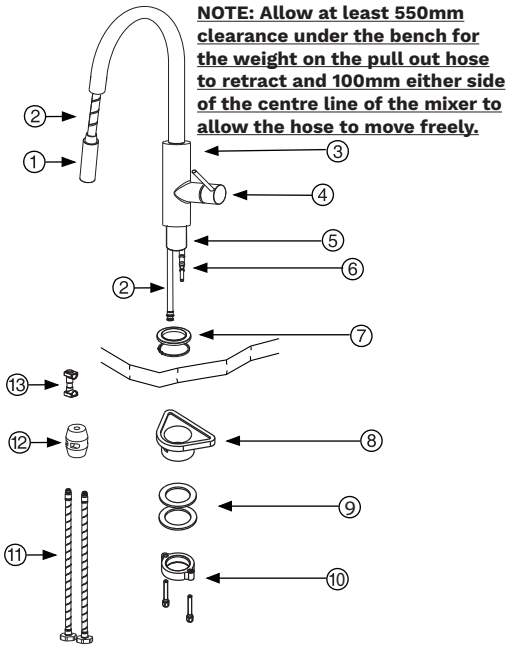
Save yourself time and enjoy peace of mind by registering your new  
PARISI product directly with PARISI.  
Simply scan the QR code below and fill in the online form.



## ENVY II PULL OUT KITCHEN MIXER SLIM II PULL OUT KITCHEN MIXER



## INSTALLATION



**NOTE: Allow at least 550mm clearance under the bench for the weight on the pull out hose to retract and 100mm either side of the centre line of the mixer to allow the hose to move freely.**

1. Place the base flange and washer (7) onto thread (5)
2. Screw the flexible hoses (11) under the mixer body (3).
3. Place the mixer into position on the benchtop
4. Place the stabilizing triangle (8) if required (e.g. Stainless Steel Kitchen Sinks) over the thread (5).
5. Place washers (9) over the thread (5).
6. Screw locking nut (10) onto thread (5) use the screws to tighten the mixer to the bench/sink
7. Use quick connector (13) to attach pull out hose (2) to water outlet (6)
8. Attach the weight (12) to the pull out hose (2)

NO.	DESCRIPTION	QTY
1.	Pull Out Spray	1PC
2.	Pull Out Hose	1PC
3.	Body	1PC
4.	Handle	1PC
5.	Thread	1PC
6.	Water Outlet	1PC
7.	Base Flange with Seal	1PC
8.	Stabilizing Triangle	1PC
9.	Washer Set	1PC
10.	Locking Nut	1PC
11.	Flexible Hoses	2 PC
12.	Weight for Pull Out Hose	1PC
13.	Quick Connector for Pull Out Hose	1PC

## WARNING



1. Each tapware body assembly is hydraulically pressure tested at the factory. Do not attempt to dismantle the assembly yourself.



2. Before installing the tapware, flush out the water lines to ensure that the pipes are free of any dirt or debris: avoid blockages in the cartridges.



3. After installing the tapware, check all connection points or leakages. Always turn OFF water before removing or disassembling the tapware.



4. Hydraulic pressure for Parisi tapware is 50-500 kPa (including hot and cold hydraulic pressure).



5. Open tapware handle to relieve water pressure and ensure that the water is shut off completely.



6. Do not apply any undue force when using any tools.



7. Do not bend or squeeze the hoses.

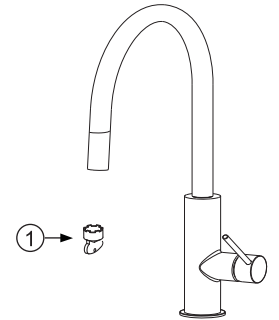


8. Working temperature is less than 90° (80° is recommended).

## MAINTENANCE

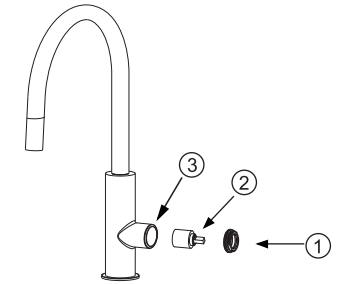
### AERATOR

1. Remove the aerator by inserting the blue key (1) provided in the box. Turn clockwise.
2. Place aerator in water for 1 hour.
3. Rinse and re-assemble the aerator to spout.



### CARTRIDGE

1. After removing the handle
2. Unscrew the lock nut (1)
3. Remove cartridge (2) from tapware body (3).
4. Re-assemble in reverse.



### CLEANING

Constant or regular cleaning will maintain tapware lustre.

- ✓ Only use clear water to rinse and soft cotton cloth to dry. Never use abrasive products (such as cleaners, cloths, or paper) acidic detergent, harsh cleaner or soap.

✓ = Soft Cotton Cloth

✗ = Acid, Strong Detergent

In case of thick sediments proceeds as follows:

1. Clean the surface of your tapware with clear water and soft cotton cloth.
2. Use any of the following to remove the dirt:
  - ✓ Mild liquid detergent.
  - ✓ Clear liquid glass cleaner mixed according to the manufacturers directions.
  - ✓ Non-abrasive liquid polish.
3. After cleaning, rinse the tapware thoroughly again with clear water to remove the cleaner and dry it with a soft cotton cloth.

In case the water flow is reduced clean the aerator using instruction above.

