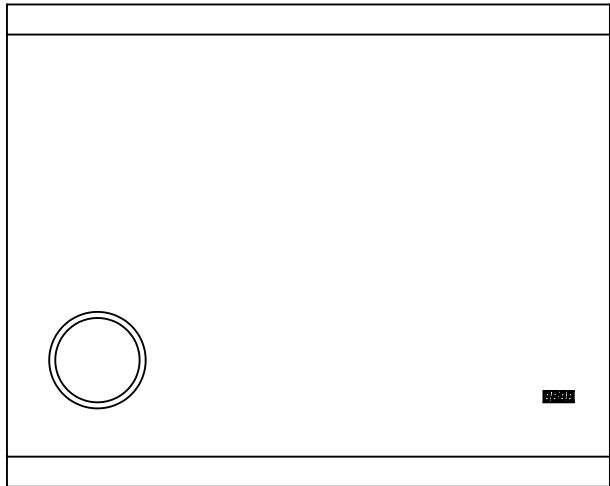
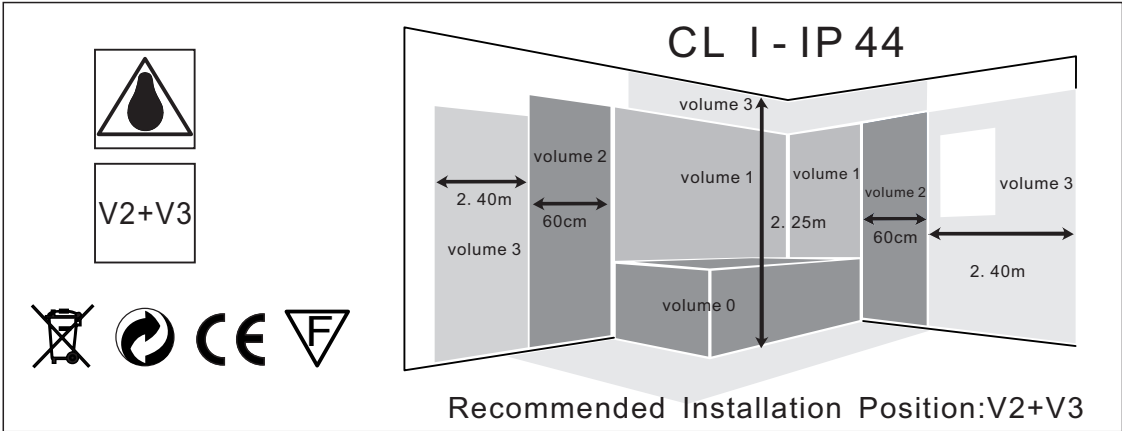
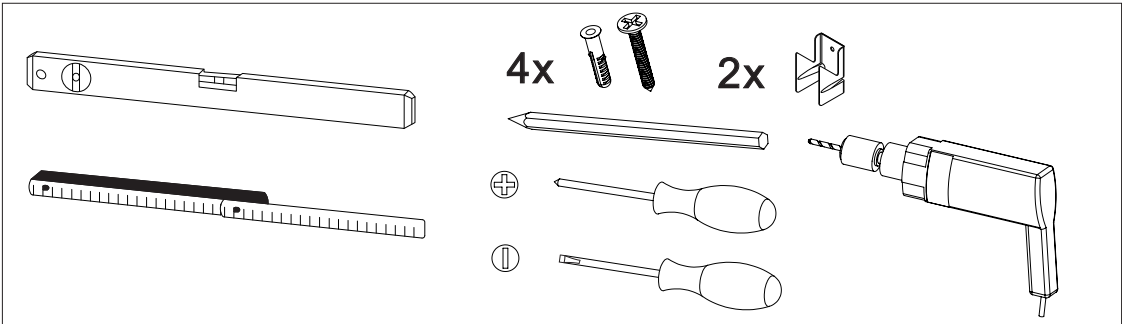
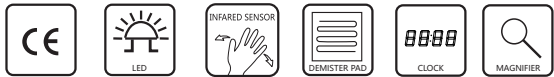


Laser 80/100/120 LED MIRROR



INFRARED SENOR
NB. Please note that the mirror must be installed at least 150-200mm from the side wall or bath furniture

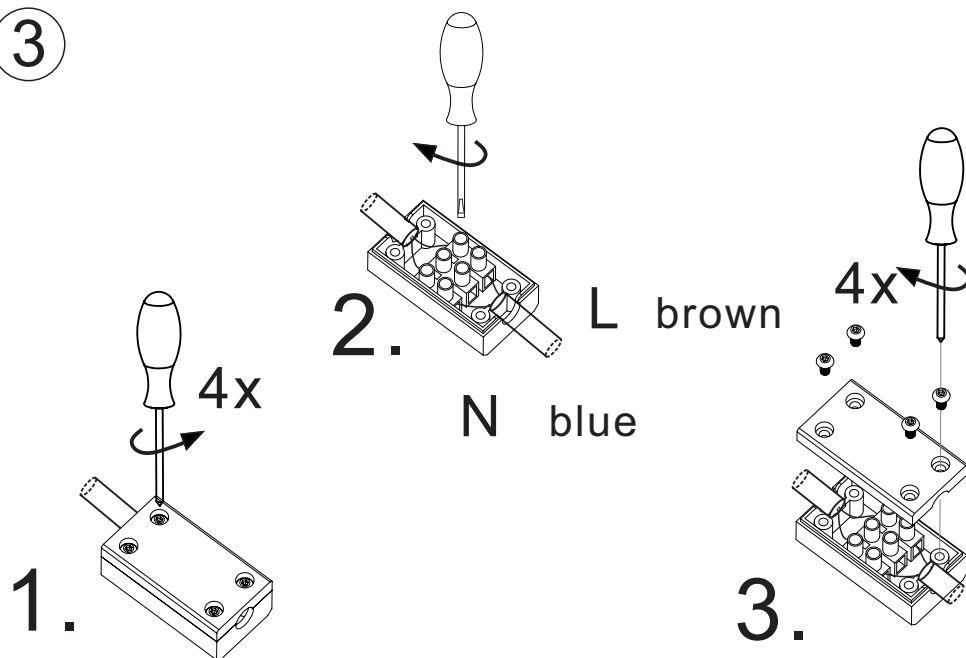


1

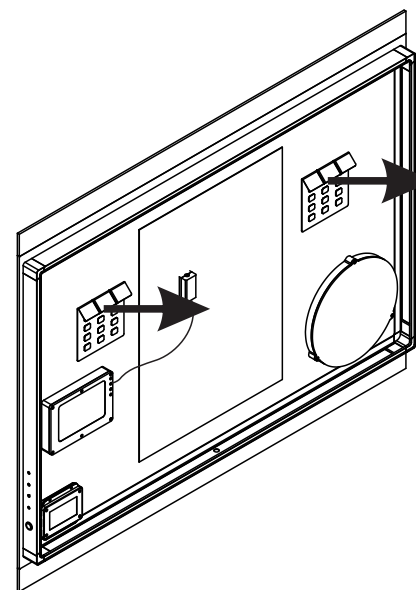
Model	B
Laser 80 Mirror(800x800)	460mm
Laser 100 Mirror(1000x800)	580mm
Laser 120 Mirror(1200x800)	780mm

2

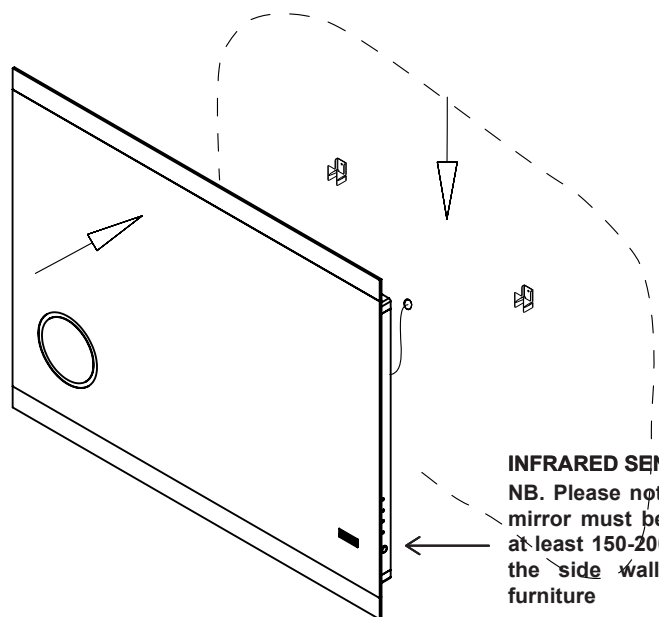
3



4

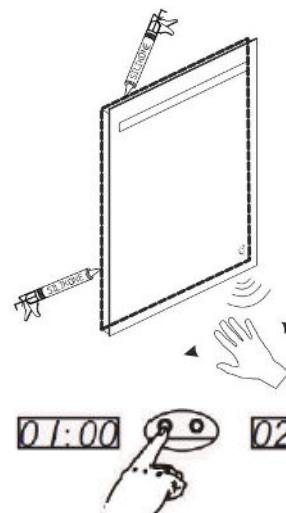


5



INFRARED SENSOR

NB. Please note that the mirror must be installed at least 150-200mm from the side wall or bath furniture



Wave your hand slowly near the sensor switch to make the light on or off. There can be no other objects within 30cm in front of the sensor probe, which will affect the function of the switch.



Press the left button for 3 seconds and wait until the HOUR numbers flash. With the right button you can adjust the correct hour. To change the minutes, press the left button then press the right button to adjust the minutes.