

**GENERAL INFO**
**PREMIUM DEDICATED FILTER TAP RANGE**

A range of stylish faucets with all-round appeal. Puretec's DFU Series comes in 6 different design choices, meaning there is a tap design to suit every kitchen style. The DFU Series also features variable flow and ceramic disc technology, so you can enjoy years of trouble-free service, backed by a 3 year warranty^.



DFU110



DFU130



DFU135



DFU155



DFU170



DFU180

**SPECIFICATIONS**

Max Flow:	<b>7 Litres/Minute</b>
Min/Max Temperature:	<b>0°C - 52°C</b>
Min/Maximum Pressure:	<b>200 - 500* kPa</b>
Connection:	<b>¼" tube [7/16" BSP]</b>
Required Hole for the Tap:	<b>12.5 mm diameter</b>
Warranty:	<b>3 years^</b>

^3 year warranty is 1 year parts and labour, plus 2 years parts only. \*Where line pressure exceeds 500 kPa, an approved pressure limiting device must be installed to comply with Australian & New Zealand Plumbing Standards. (Ref. AS/NZS 3500.1:2021, Clause 3.3.4).

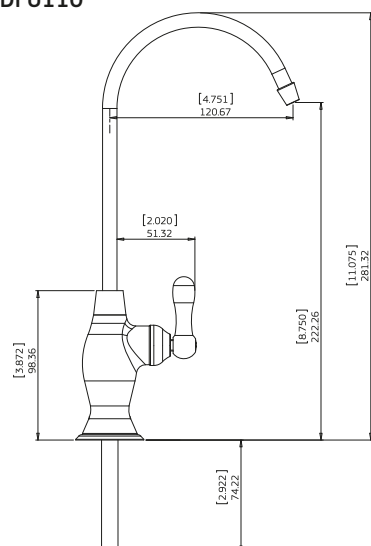
**MODEL CODES**

Ordering Code:	Description:
<b>DFU110</b>	High Loop, ¼ turn, all chrome
<b>DFU130</b>	Long Reach, ¼ turn, all chrome
<b>DFU135</b>	Long Reach, ¼ turn, all chrome
<b>DFU155</b>	Goose Neck, ¼ turn, spindle lever
<b>DFU170</b>	Contemporary, ¼ turn, all chrome
<b>DFU180</b>	High Loop, ¼ turn, all chrome

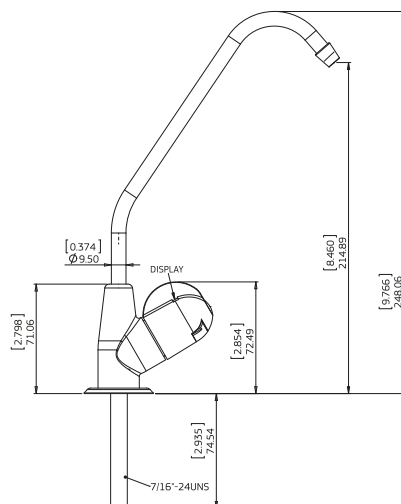
Puretec manufactures and distributes a huge range of water filters compatible with the DFU Series faucets.

**FAUCET DIMENSIONS** Measurements in Millimetres (mm)

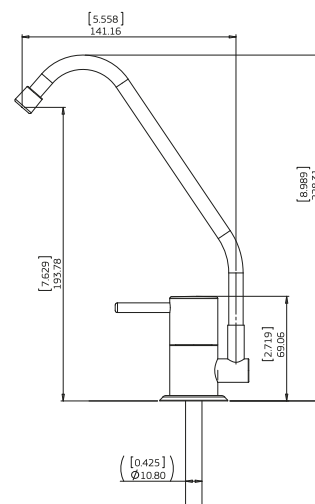
DFU110



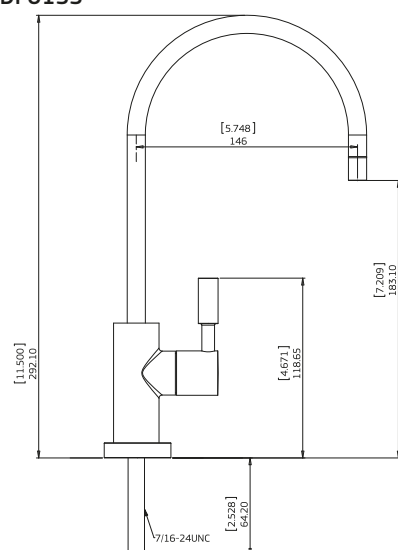
DFU130



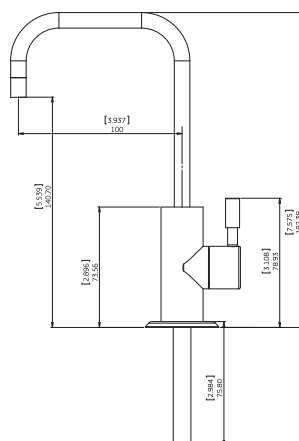
DFU135



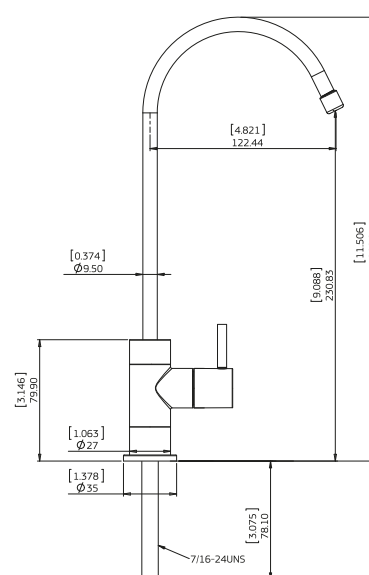
DFU155



DFU170



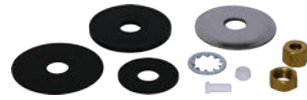
DFU180



SPARES



BFB078



DFU-FC



DFU-FC155



DFU-FC180/250



KTA48

Ordering Code:	Description:
<b>BFB078</b>	Faucet to Ezy Hooker Bush, chrome plated brass, 1/2" M x 7/16" F
<b>DFU-FC</b>	Faucet mounting components kit,
<b>DFU-FC155</b>	Faucet mounting components kit, suits DFU155
<b>DFU-FC180/250</b>	Faucet mounting components kit, suits DFU180/OT250
<b>KTA48</b>	Tap adaptor (faucet adaptor), 1/4" Tube x 7/16" F
<b>KTA68</b>	Tap adaptor (faucet adaptor), 3/8" Tube x 7/16" F

**Note:**

1. No claims can be made based on the specifications and images in this document. The design, technology, colours, features and prices are subject to change.
  2. This document and all its contents are copyright protected. All rights are reserved, particularly alteration, translation and reproduction using electronic systems.
  3. ^Warranties in this document cover parts for the period stated and include cover for parts and labour for the first year where applicable, subject to approval. Plus 2 years parts only.
- Our Water Filtration Specialists can provide you with advice to suit your needs.