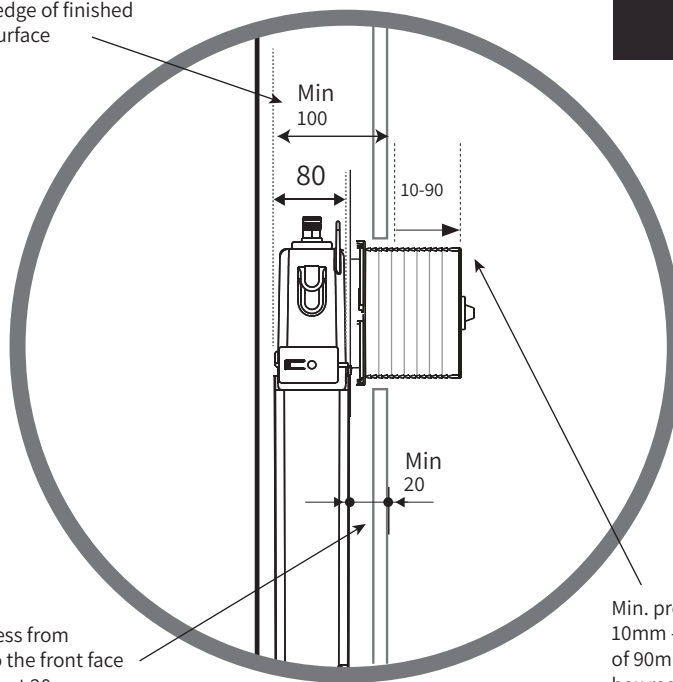




Minimum of 100mm
from rear of cistern to
front edge of finished
wall surface



Minimum thickness from
front of cistern to the front face
of wall to be at least 20mm

Min. projection of
10mm - Max. projection
of 90mm of the flange
box required prior to
trimming to accommodate
actuator,

Oli 74

Product Type

In-Wall Cistern

CODE

601602/MC - (Mechanical)

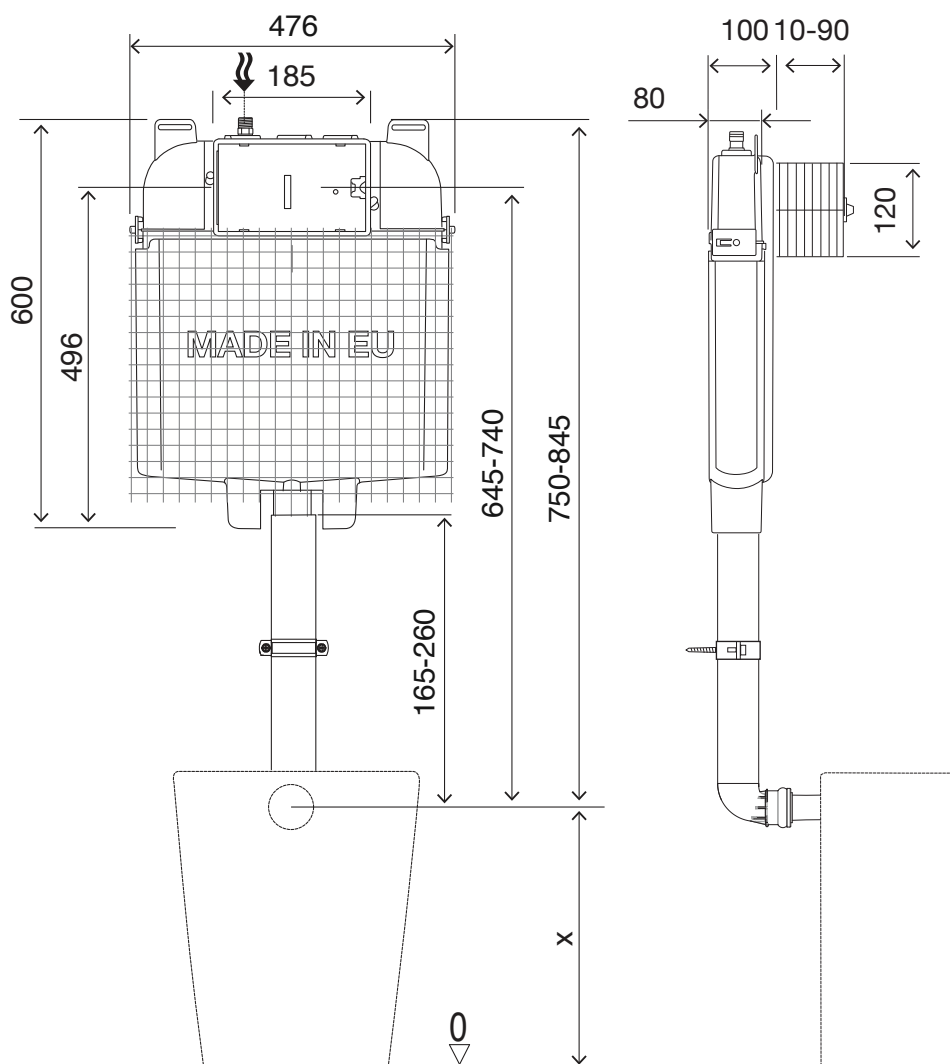
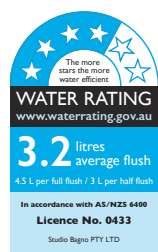
601602/PN - (Pneumatic)

WEIGHT

3.5 kg

FEATURES

- Compatible with all Oli Actuator Plates
- Front Access
- Dual Flush with 4.5/3 Litre Flush
- 100mm min, wall cavity required
- 10 year Warranty
- Factory Flush Tested
- Made in Portugal
- Mechanical actuator kit included
- Delayed Refill valve saves 0.5L every flush



Note: All dimensions are in millimetres and are subject to normal manufacturing variances. Physical Product must be proofed and measurements confirmed before any alteration to installation area is conducted. Studio Bagno reserves the right to alter dimensions at any time. Date created: 29/07/2024