

SUSSEX

Care & Maintenance

SX

Inside

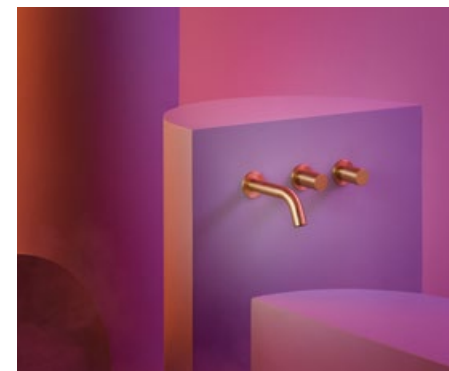
04

LUXPVD® Finishes
—
Unique & luxurious



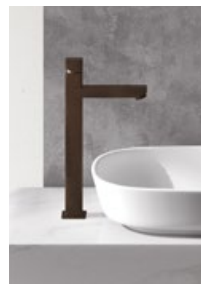
06

Electroplated Finishes
—
Chrome, Matt, Brushed,
Hard Metal



8

Living Finishes
—
Brass/Copper, Rustic



10

Stainless Steel
—
316 Marine Grade

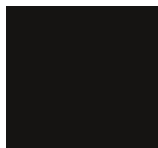


11

Paint Finishes
—
6 vibrant colours



LUXPVD®

Designen
Finishes


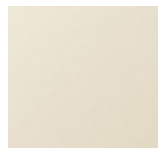
LUXPVD®
Matt Opium Black



LUXPVD®
Brushed Smoke
Gunmetal



LUXPVD®
Brushed Oyster Nickel



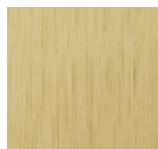
LUXPVD®
Platinum Gold



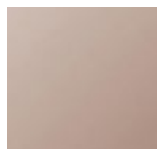
LUXPVD®
Brushed Platinum Gold



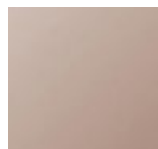
LUXPVD®
Pure Gold



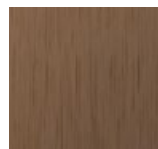
LUXPVD®
Brushed Pure Gold



LUXPVD®
Silk Rose Gold



LUXPVD®
Brushed Silk Rose Gold



LUXPVD®
Brushed Rare Bronze

Description/What to expect

A robust, durable and hard-wearing finish that is suitable for all indoor applications.
An everlasting finish that is corrosion-resistant and easy to clean.

Cleaning & Maintenance

- Using a soft cloth or dampened sponge, gently clean with soapy water, using a mild detergent. Rinse with clean water and towel dry.
- Clean regularly (weekly).
- Dry with a soft cloth after each use.
- For a deeper clean, use a 50:50 mix of vinegar and water. Wipe with a soft cloth and then rinse immediately with fresh water and gently towel-dry.
- For hard-to-get-to places, a soft plastic scrub brush can be used.

Caution

- Do not use any chemical or abrasive cleaners eg. ammonia or bleach.
- Protect against exposure to tile or grout cleaners.
- Do not use an abrasive cleaner eg. Ajax or Jiff.
- Avoid using a scrubbing brush or scourer to clean.



Electroplated

Standard Chrome, Matt & Brushed

Design
Finishes



Electroplated
Chrome



Electroplated
Satin Chrome



Electroplated
Matt Chrome

Description/What to expect

A robust, durable and hard-wearing finish that is suitable for all indoor applications. An everlasting finish that is corrosion-resistant and easy to clean.

Cleaning & Maintenance

- Using a soft cloth or dampened sponge, gently clean with soapy water, using a mild detergent. Rinse with clean water and towel dry.
- Clean regularly (weekly).
- Dry with a soft cloth after each use.
- For a deeper clean, use a 50:50 mix of vinegar and water. Wipe with a soft cloth and then rinse immediately with fresh water and gently towel-dry.
- For hard-to-get-to places, a soft plastic scrub brush can be used.

Caution

- Do not use any chemical or abrasive cleaners eg. ammonia or bleach.
- Protect against exposure to tile or grout cleaners.
- Do not use an abrasive cleaner eg. Ajax or Jiff.
- Avoid using a scrubbing brush or scourer to clean.

Electroplated

Hard Metal



Electroplated
Black Chrome



Electroplated
Brushed Black



Electroplated
Matt Black



Electroplated
Gunmetal Chrome



Electroplated
Brushed Gunmetal



Electroplated
Matt Gunmetal



Electroplated
Nickel



Electroplated
Brushed Nickel



Electroplated
Matt Nickel

Description/What to expect

Our hard metal finishes possess similar properties to Chrome, offering a durable, hard-wearing and easy-to-clean finish that will endure for many years. An array of different colours are available to suit a wide range of decor. These finishes require slightly more care and treatment than Chrome, mainly to sustain a long-lasting finish.

Cleaning & Maintenance

- Using a soft cloth or dampened sponge, gently clean with soapy water, using a mild detergent. Rinse with clean water and towel dry.
- Clean regularly (weekly).
- Dry with a soft cloth after each use.
- For a deeper clean, use a 50:50 mix of vinegar and water. Wipe with a soft cloth and then rinse immediately with fresh water and gently towel-dry.
- For hard-to-get-to places, a soft plastic scrub brush can be used.

Caution

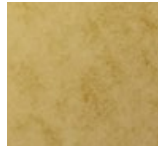
- Do not use any chemical or abrasive cleaners eg. ammonia or bleach.
- Protect against exposure to tile or grout cleaners.
- Do not use an abrasive cleaner eg. Ajax or Jiff.
- Avoid using a scrubbing brush or scourer to clean.

Living Brass/Copper

Designen
Finishes



Living
Polished Brass



Living
Tumbled Brass



Living
Brushed Brass



Living
Copper



Living
Tumbled Copper

Description/What to expect

A raw (unsealed) metal surface that is designed to tarnish and patina in an inconsistent manner over time. Time influences how this finish appears and it can often darken to a rustic appearance. Mineral build up may appear in the form of oxidation spots and this finish is more susceptible to corrosion in coastal and high-mineralised areas.

Cleaning & Maintenance

- Clean with warm, soapy water and a cotton cloth. Rinse with clean, fresh water. Towel dry.
- Clean regularly (weekly).
- You may use wax-based cleaning solutions.
- Wipe down after each use.
- For a deeper clean, use a 50:50 mix of white vinegar and water gently cleaning with a cotton cloth. Rinse with clean, fresh water and towel dry.
- A soft brush (eg. an old toothbrush) can be used for those hard-to-get-to places.

Caution

- Do not use chemical cleaners or metal polish.
- Avoid heavy scrubbing when cleaning.
- Do not use a scrubbing brush/scourer.
- Avoid contact with acidic liquids or pastes. If acid-based liquids come in contact with finish, wash immediately and towel-dry.

Living Rustic



Living
Rustic Bronze



Living
Rustic Iron

Description/What to expect

Living rustic finishes are a pre-tarnished raw brass with a waxed surface to help preserve the finish. As a raw finish, the surface can patina and change in appearance further depending on its environment. Living Rustic finishes are susceptible to chemicals (ammonia, bleach) and a majority of other cleaning products. Applying such cleaning products could remove the tarnishing thus causing an undesired effect.

Cleaning & Maintenance

- Clean with warm, soapy water and a cotton cloth. Rinse with clean, fresh water. Towel dry.
- Clean regularly (weekly).
- Wipe down with a dry cloth after each use.
- Use a soft brush (eg. an old toothbrush) to reach the hard-to-get-to places.
- Use "renaissance" wax to preserve the finish. Apply a small amount of wax on a soft cloth and gently rub all over the surface. After application, gently clean as per first cleaning instruction.
- A soft brush (eg. an old toothbrush) can be used for those hard-to-get-to places.

Caution

- Avoid the use of chemical cleaners, such as ammonia or bleach.
- Avoid using metal polish.
- Do not use chemical cleaners or metal polish.
- Avoid heavy scrubbing when cleaning as this can alter the surface finish.
- Do not use a scrubbing brush/scourer.
- Avoid contact with acidic liquids or pastes. If acid-based liquids come in contact with finish, wash immediately and towel-dry.

Stainless Steel

316 Marine Grade

Design
Finishes



Stainless Steel
316 Marine Grade

Description/What to expect

316 Marine-grade Stainless Steel is an unsealed, robust material designed for outdoor use, providing many years of usage in a wide range of environments.

As with any Stainless Steel products, exposure to hard water and/or coastal environments can cause "tea-staining" (surface discolouration).

Cleaning & Protection

- Using fresh water and a mild detergent, wash with a soft cloth or sponge. Rinse with clean, fresh water and towel-dry.
- Clean regularly (weekly).
- For stubborn stains and/or tea-staining, a nylon scourer can be used with a metal surface cleaner (Note: for brushed finishes, clean with scourer in same direction as brush lines).

How to Minimise "Tea-Staining"

- Thoroughly clean surface.
- Apply spray protectant 'NanoCoat Metal 2 in 1'.
- Use protectant regularly.

Caution

- Do not use chemical cleaners containing ammonia or bleach.
- Do not use steel scouring pads.

Paint



Paint
Matt Red



Paint
Matt Orange



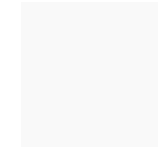
Paint
Matt Yellow



Paint
Matt Green



Paint
Matt Blue



Paint
Matt White

Description/What to expect

Our painted finishes are similar to automotive paints that are designed to be wearable, durable and easy to clean.

Treated well and with regular maintenance, painted finishes can last for many years.

Cleaning & Maintenance

- Using a soft cloth or dampened sponge, gently clean with soapy water, using a mild detergent. Rinse with clean water and towel dry.
- Regular cleaning (weekly).
- Dry with a soft cloth after each use.
- For a deeper clean, use a 50:50 mix of vinegar and water. Wipe with a soft cloth and then rinse immediately with fresh water and gently towel-dry.

Caution

- Do not use any chemical or abrasive cleaners eg. ammonia or bleach.
- Avoid contact with sharp objects (eg. rings, cutlery, kitchen utensils).
Note: sharp objects could chip or scratch the surface.
- Protect against exposure to tile or grout cleaners.
- Do not use an abrasive cleaner eg. Ajax or Jiff.
- Avoid the use of kitchen scourers or brushes for cleaning.



SX

MAKING IT RIGHT
ENTIRELY IN
AUSTRALIA
SINCE 1983