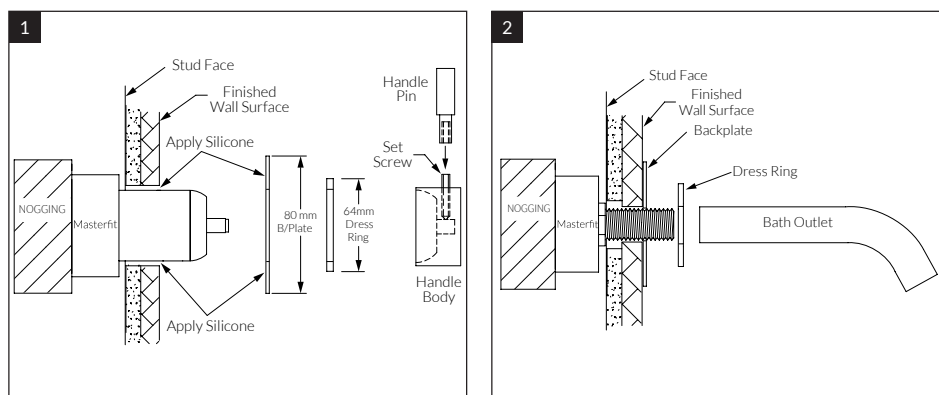


# Voda

## Wall basin mixer outlet system Dress kit

SUSSEX



### Product code

VWBMS160RH Wall basin mixer outlet system 160mm  
 VWBMS200RH Wall basin mixer outlet system 200mm  
 VWBMS250RH Wall basin mixer outlet system 250mm

### 1. Mixer dress kit

- Remove Mixer protective cover.
- Using silicone, seal the wall surface around the Mixer and Outlet threads.
- Apply a small amount of silicone to the rear of the backplate prior to mounting onto the wall.
- After Backplate has been mounted, fit the Mixer Dress Ring.
- Fit the handle body onto the Mixer Cartridge Lever ensuring the Handle is fully engaged.
- Secure the Handle Body by tightening the Set screw using the Allen Key provided (tighten well).
- Attach the Handle Pin.

**Note:** Apply a small amount of silicone or mild adhesive (Loctite) to the thread of the Handle Pin to assist in preventing the Pin from becoming loose).

### 2. Outlet fit off

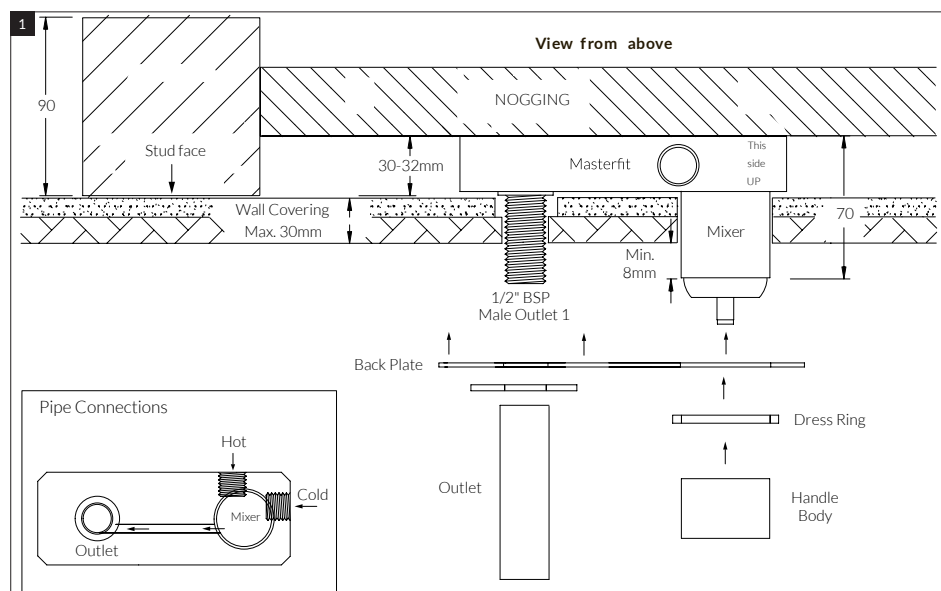
- Apply sealing tape (Teflon) to male thread.
- Place Dress Ring and Dress Flange over prepared male thread.
- Fit the Outlet.

To complete the installation, operate the Mixer(s) checking the flow of both hot and cold water from Outlet. Check all fittings and fixtures for water leaks.

# Voda

## Wall basin mixer outlet system Rough-in

SUSSEX



### Product code

VWBMS160RH Wall basin mixer outlet system 160mm  
 VWBMS200RH Wall basin mixer outlet system 200mm  
 VWBMS250RH Wall basin mixer outlet system 250mm

### Rough in plumbing

- Prior to installing, calculate the finished wall thickness, maximum is 30mm thick, contact manufacturer for further options.
- If Wall thickness is greater than 30mm, contact manufacturer for further options.
- Prepare a Nogging to be fixed parallel between the Wall Studs.
- The Nogging must be fitted to enable the base of the Masterfit to be 30-32mm back from the Stud Face.
- The Masterfit will be marked "This side Up" to indicate orientation.
- Using the screws (x4) provided, mount the Masterfit to the Nogging. Ensure the Masterfit is level and square.

### Pipe connections

- The Hot and Cold ports are marked on the Masterfit. (Mixers have individual Hot/Cold inlet ports).
- Flush all water feed lines. All lines must be free from any dirt and debris before connecting to the Masterfit.
- Connect Hot and Cold lines to the corresponding 1/2" BSP ports of the Masterfit. (see Drawing)
- Do not remove any factory fitted pressure plugs or Fixings.
- Once all water connections are made, check Hot/Cold water flow by operating the Mixer Cartridge.
- Check all fittings and fixtures for leaks.
- Leave the Mixer(s) in the closed position and replace the Mixer protective cover.
- Store the Dress Kit in a safe place until required (see Dress Finishing Guide)

### Plumber note

- On-site high pressure line testing must be conducted with the Mixer in the closed position. (STATIC TEST ONLY)
- Under no circumstances is the Mixer to be opened when exceeding the maximum stated water pressure.
- At the completion of the testing, do not relieve any high pressure by opening the Mixer.
- Exposing the internals of the Mixer Cartridge to higher than specified water pressures, will void the manufacturer's warranty.