

INSET AND UNDERMOUNT SINK INSTALLATION GUIDES

Thank you for purchasing a Turner Hastings Fine Fireclay Inset/Undermount Sink. If you have any questions during the installation of this product, please do not hesitate to call us on 1300 00 2284.

BEFORE YOU BEGIN

- Read these instructions carefully before you begin this installation.
- Observe all local plumbing and building codes.
- Due to the various cutout sizes possible, and natural variation in fireclay, we recommend using the actual sink instead of the template where possible.
- Prior to installation, unpack the new sink and inspect it for damage. Return the sink to its protective carton until you are ready to install it.
- Due to the variety of installations possible with this sink, you may need to use procedures other than those described.
- It is very important that proper high-quality materials and silicones are used with your sink.
- The cabinet and frame shown in these instructions are generic and may not represent the actual design or structure.
- Due to the nature of undercounter installations, it is recommended that undercounter sink installations be performed by trained and experienced installers.
- To ensure a safe and damage-free installation, two people should install the sink.
- All information in these instructions is based on the latest product information available at the time of publication.

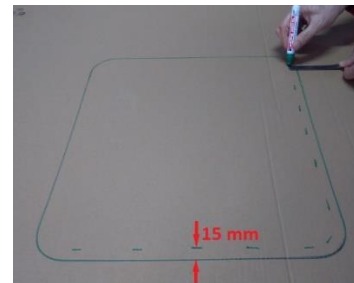


1. INSET

1. Place the sink upside down on the bench top. Trace around the outer edges on the bench top.



2. Draw a second line the correct distance inside the marked line based on the sink you have.



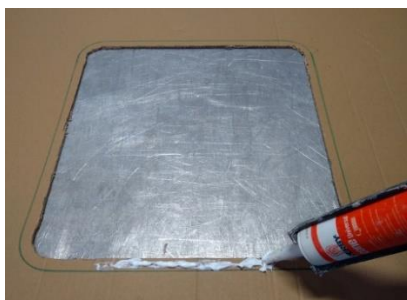
3. Cut out the bench top on the inside line



4. Install the waste in the sink, using silicone between the top flange and the sink



5. Apply silicone around the edge of the bench top



6. Place the sink into the benchtop, wipe away excess silicone, and leave to cure for 24 hours before use



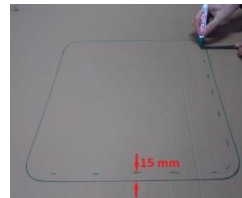


2. UNDERMOUNT

1. Place the sink upside down on the bench top. Trace around the outer edges on the bench top.



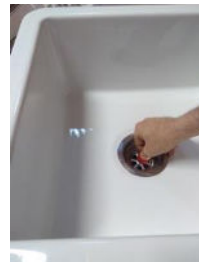
2. Draw a second line the correct distance inside the marked line based on the sink you have. Allow for a 5mm internal overhang.



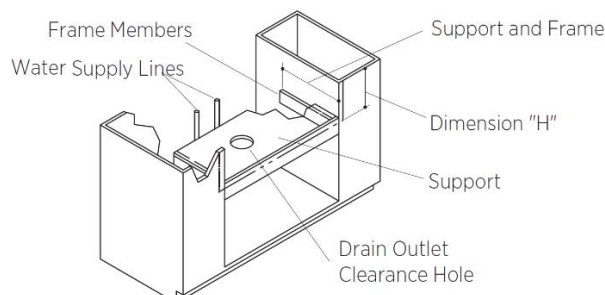
3. Cut out the bench top on the inside line, and polish inside edge.



4. Install the waste in the sink, using silicone between the top flange and the sink



5. Measure the overall height of the sink (Dimension "H") and install a shelf or supporting beams the same distance down the inside of the cabinet, place the sink on this shelf



6. Apply some approved flexible watertight silicone to the top of the sink. **DO NOT USE EPOXY OR ANY OTHER SOLID ADHESIVE AS THIS MAY CRACK THE SINK OVERTIME AND WILL VOID THE WARRANTY,** then place the benchtop over the top of the sink. wipe away excess silicone, and leave to cure for 24 hours before use



FINE FIRECLAY SINK CARE INFORMATION

As the glazed surface is extremely smooth and non-porous, cleaning with soapy water is usually all that is required to keep your sink clean. To maintain the original appearance, it is important to do a regular clean with non-abrasive cleaners and a soft sponge or cloth.

Fireclay sinks are created by firing the clay at high temperatures therefore some visual distortion may occur. This is not a defect but can be seen to add to the beauty of the product.

Water Stains from Hard Water

In hard water areas limescale can build-up on the surface and become visible when stained by food and drink. We recommend regular cleaning with a solution of 3-parts hot water and 1-part white vinegar or specific limescale cleaners can be used for example Viakal. Rinse well after. Keeping the sink dry will avoid future water stains.

General Stains

Fine fireclay sinks are glazed so are completely nonporous and should not stain. However, if marks or stains occur, they should be removed immediately with hot water and a gentle cleaning agent. Cleaners, such as Jif, can be used to remove tougher stains.

For more stubborn stains, soak a water and detergent mixture overnight, scrub off any dirt and stains, and finally rinse with water.

Light Marks

Pans, metal cutlery and cooking utensils can leave grey metal marks on the surface as the glazed finish is much harder than the metal utensils used in the kitchen. These marks can be removed using a powder compound called Bar Keeper's Friend, or similar. To prevent metal marks, a rubber sink mat or stainless steel grid can be purchased from Turner Hastings to sit in the base whilst washing metal items

Scratches

Fireclay is extremely durable and long lasting. However, if scratches or chips do occur, Cramer Repair Kit is recommended for minor damages to the sink.

Plastic bowls

Avoid using plastic washing-up bowls, as particles of grit can become impregnated in the base of the bowl and act like sand paper causing scratching to the glazed surface.

Do Not Use

Fireclay sinks can withstand many chemical cleaning agents; however, it can cause damage to the wastes and taps. Below is not advised.

- Use of Steel wool, scourers or metal brush
- Harsh cleaners containing severe acidic or alkaline chemicals such as sodium hydroxide, sulfuric acid or hydrochloric acid
- Toilet cleaners such as Chlorinated Cleansers or bleach of any type

FINE FIRECLAY SINK WARRANTY INFORMATION

Turner Hastings ensures that all of its products are made using the highest quality materials and workmanship. Should you find a fault with either the materials or the workmanship within their warranty period noted below, Turner Hastings will, at its discretion, repair or supply a replacement for the faulty product or component.

Fine Fireclay Sinks – Lifetime Warranty

Waste Outlets – 1 year warranty

Warranty Details – All products

- 1 year parts and labour. Any claim made after this period is for parts only. Furthermore, the following product have a replacement warranty only: Toilet Seats, Stainless Steel Grids, and Rubber Sink Mat.
- 1 year warranty applies to commercial installations
- All water pipes must be flushed prior to connecting tapware or toilets to the supply
- Maximum water pressure cannot exceed 500Kpa - AS/NZS 3500.1.-2003 (Clause 3.3.4) specifies 500kPa maximum water supply pressure at any outlet within a building for new installations
- 5 years warranty on electroplated finishes (excluding chrome). Electroplated finishes on basket wastes have a 1 year warranty
- 10 years warranty on PVD finishes. PVD finishes on basket wastes have a 2 year warranty.
- 1 year warranty applies to washers, "O" rings, lip and other seals, shower hoses and all pull out sink mixer hoses and handsets.
- Fireclay, Ceramic and Vitreous China are natural products and therefore subject to variations. This should be seen as a quality that adds to its natural beauty. Variations +/- 2% to the specifications are common and acceptable.

Product must be inspected before installation! If a product has any unacceptable marks or has been damaged, DO NOT install it. Should faulty or damaged products be installed, Turner Hastings will not accept any obligation to provide labour for removal or replacement of the product.

Turner Hastings Product Warranty will only apply where the product has been installed by a qualified tradesman and in full accordance with installation instructions. This warranty does not cover damage by improper installation, accident, misuse, abuse, negligence, excessive wear and tear, improper care and maintenance, water and natural causes such as sunlight, humidity and other environmental conditions. All installation works should be carried out by a Licensed tradesman according to the Plumbing and Drainage Code of Practice and the requirements of any relevant Statutory body. Installations must be carried out strictly in accordance with the installation

instructions provided with each of Turner Hastings' products. Turner Hastings makes every effort to supply our clients with outstanding quality products. We can in no way be held responsible for any damages arising from failure due to the method the product was installed or commissioned.

Replacement products and parts must be delivered to the original store of purchase for WHS compliance.

Our goods come with guarantees that cannot be excluded under the Australian Consumer Law. You are entitled to a replacement or refund for a major failure and for compensation for any other reasonable foreseeable loss or damage. You are also entitled to have the goods repaired or replaced if the goods fail to be of acceptable quality and the failure does not amount to a major failure.

Warranty Details - Fine Fireclay Sinks

Fireclay is a natural product and therefore subject to variations. This should be seen as a quality that adds to its natural beauty. Variations +/- 2% to the specifications are common and acceptable. Never cut out or construct your bench top or kitchen cabinetry without having the sink onsite with you for measurements. If cabinetry or bench tops have been cut without the sink being measured, and the sink does not fit, Turner Hastings will not cover any costs of replacing or modifying any cabinetry or bench tops.

Do not over-tighten the waste as this can cause the sink to develop stress fractures over time.

A waterproof sealant should be used to help seal the sink and fill the gap between the sink and bench top. Do not use epoxy type glues – these glues harden and prevent the expansion and contraction of the sink which can lead to the sink cracking. The use of epoxy glues will void this warranty.

Your new fireclay sink may have a small crack or chip in an unglazed position such as the underside (in a place not seen after install). Small cracks and chips is not a manufacturing fault or defect, and in fact is common in ceramic, fine fireclay and other natural clay fired products. The cracks or chips is what is called a "firing crack", and it happens when the clay is baked in the oven during manufacturing, and is part of the heating and cooling process. The crack or chip is simply aesthetic only, and will not affect the installation, structure, or usability of the sink. The crack or chip will not grow over time either. This product still carries the full 30 years warranty Turner Hastings provides on fireclay sinks.

Warranty Details - Lifetime Warranty

Turner Hastings offers Lifetime warranty on certain product ranges. Our warranties are transferable from one product owner to the next. Proof of purchase must be submitted to make a warranty claim. Turner Hastings will repair or replace product or parts that are faulty due to a manufacturing defect. This does not cover general wear and tear or other exceptions detailed on this warranty page. Replacement labour costs are only covered in the first 12 months, like all of our warranties.