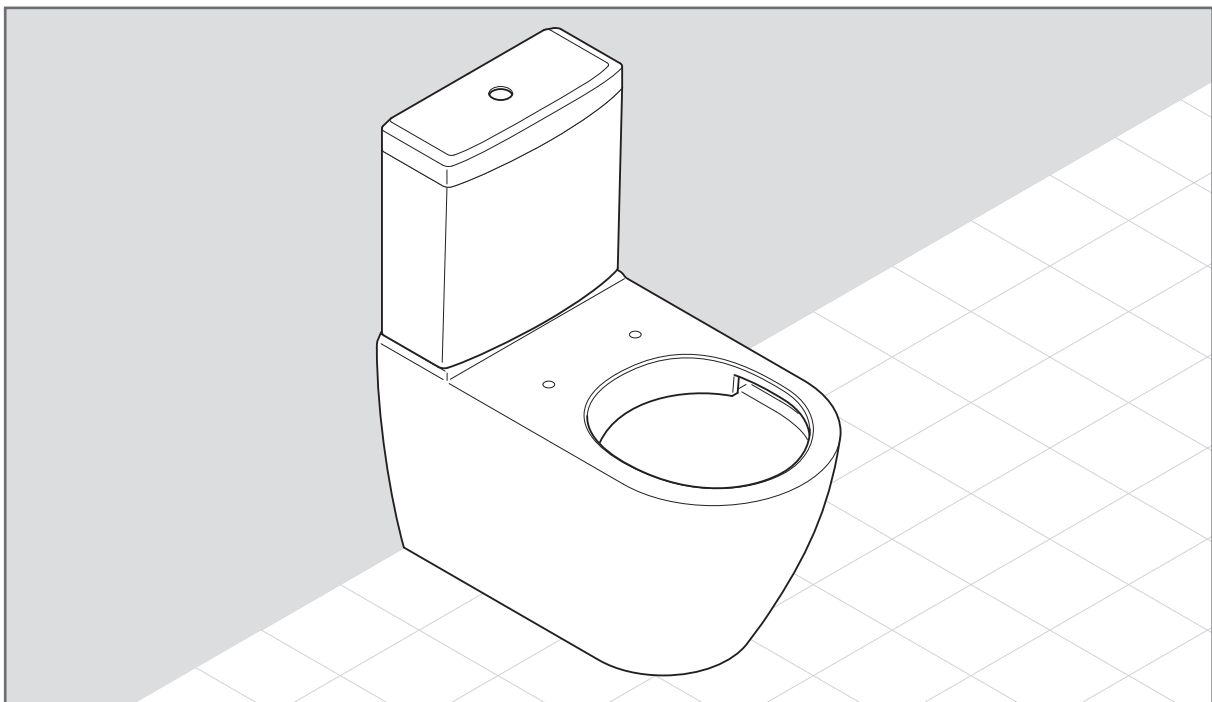


# General Instruction

**General  
Instruction**  
Villeroy & Boch



**EN** Installation instructions



ARGENTAUST.AU

1. Inspect all parts prior to installation for suitability and/or defects.
2. Any suspected defect should be reported as soon as possible.
3. Should any product be installed despite a fault having been found and reported, liability will not be accepted for the cost of labour to remove and install any replacement product/s.



***Important***

The product must be installed by a qualified person in a manner prescribed by local & statutory regulations and to the manufacturer's specifications.



***Important***

Inlet valve water pressure and pipe sizing must comply with AS3500-4 & Manufacturers specifications.

- Maximum 500 kpa static.
- Minimum 100 kpa dynamic.
- Not suitable for low pressure systems.

### 3 Warranty conditions



***Important***

Warranty is only valid if products are installed and operated in accordance with the manufacturers instructions.



***Important***

Documents of purchase and/or installer compliance certificates need to be produced to validate the product is within the manufacturers warranty period.



***Important***

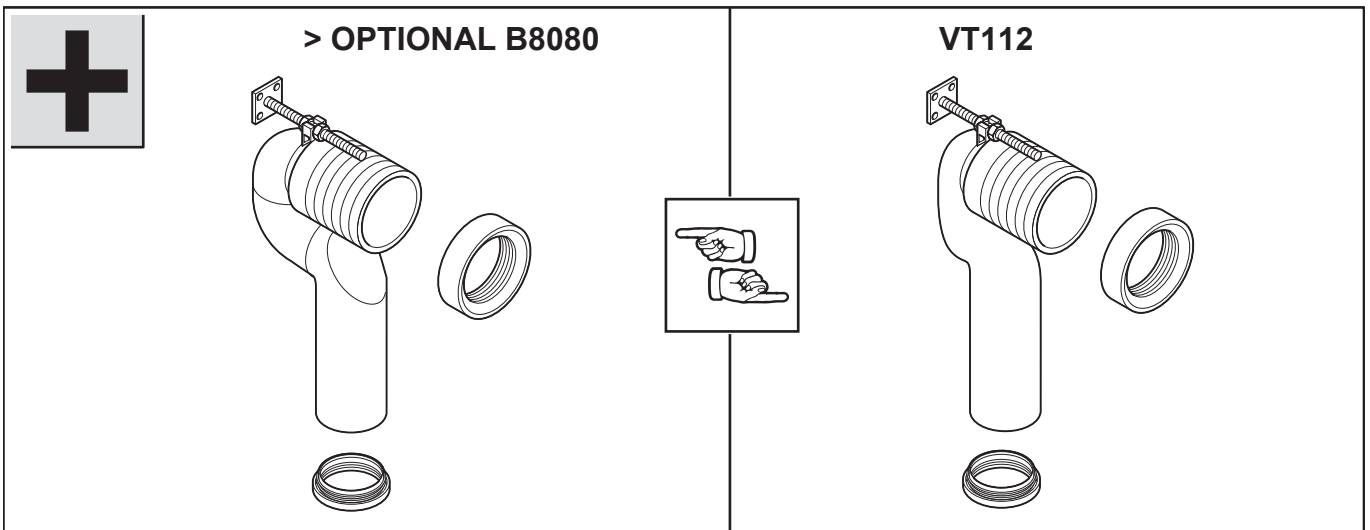
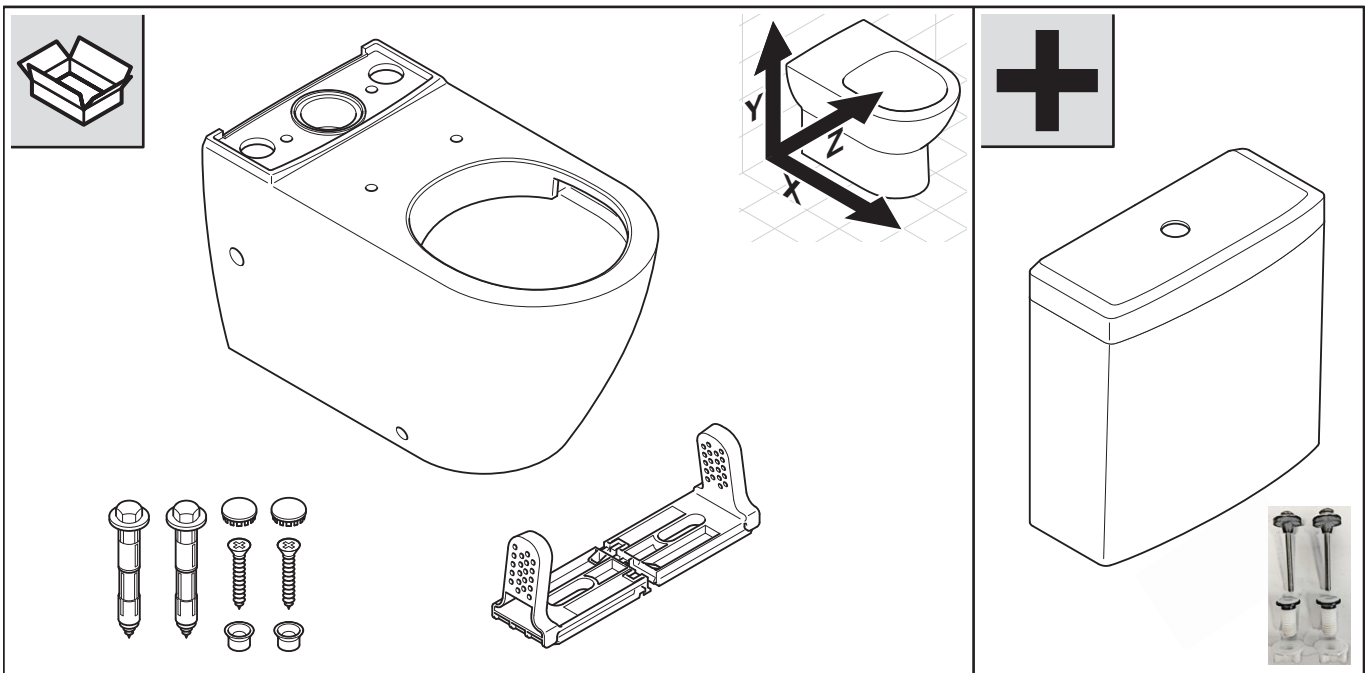
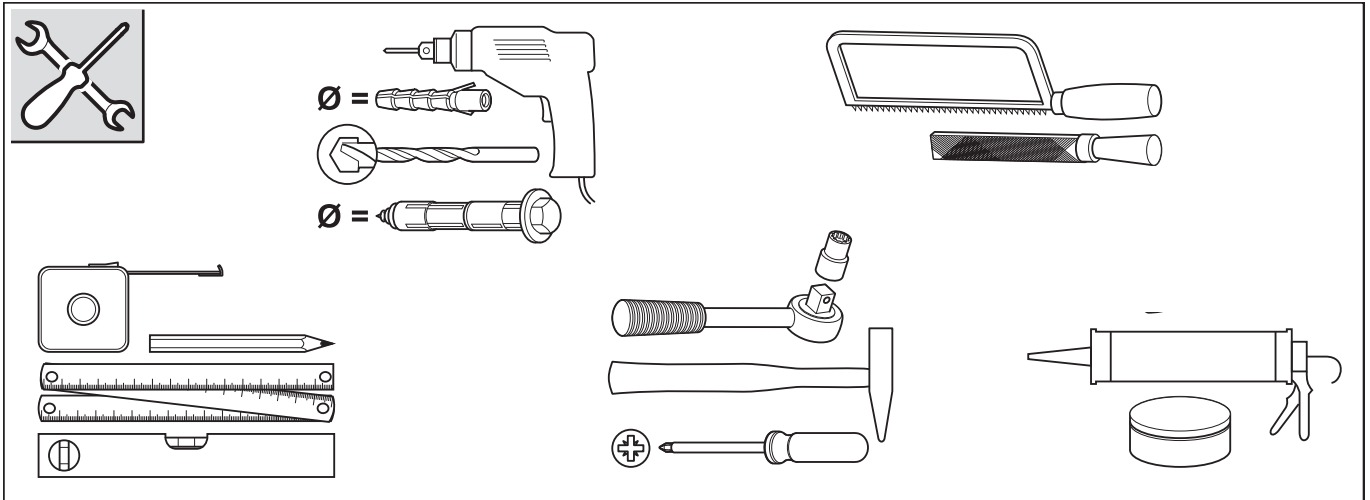
Argent Australia Pty Ltd is the authorised distributor and warranty agent for these products.

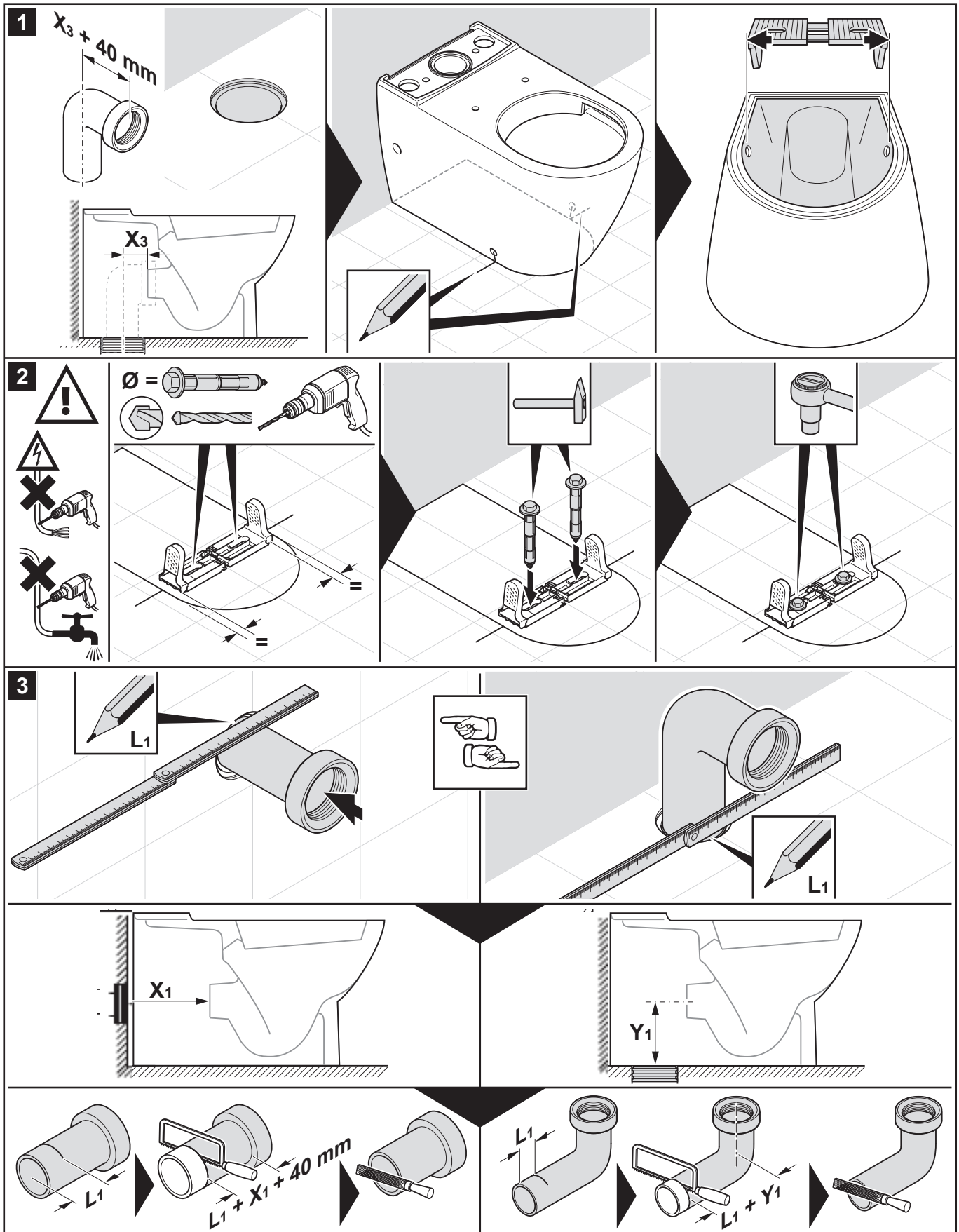
Argent Australia Pty Ltd must be contacted to authorise any service within the warranty period.

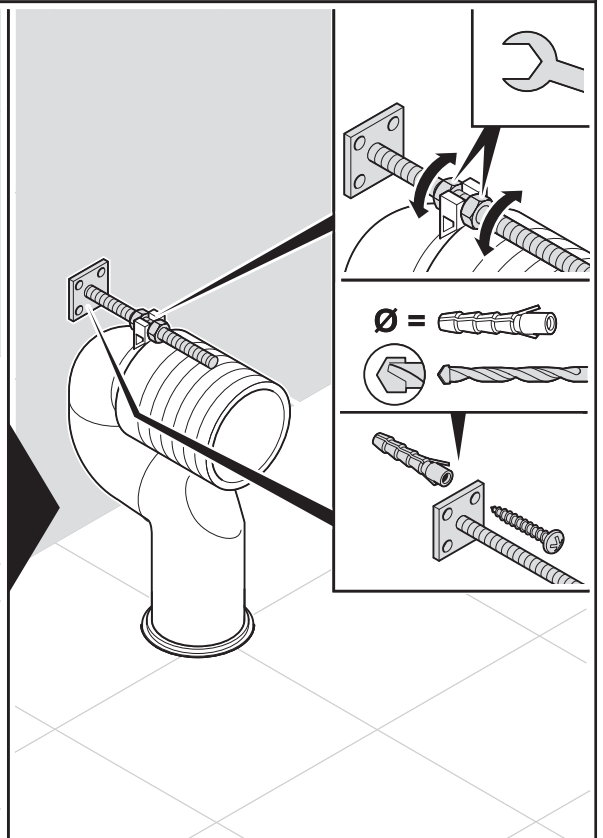
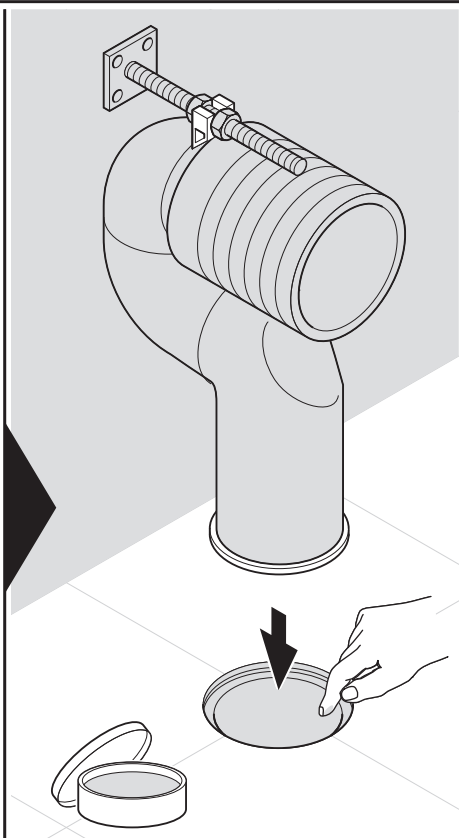
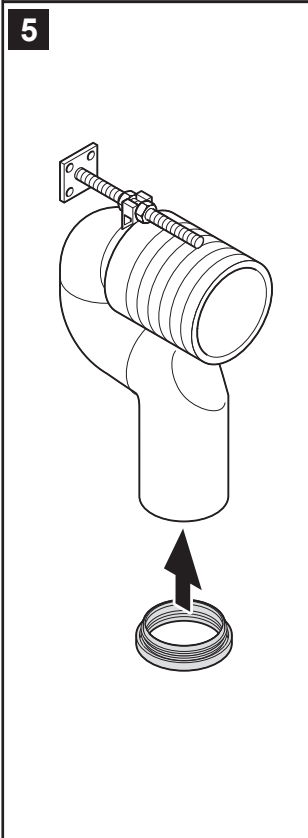
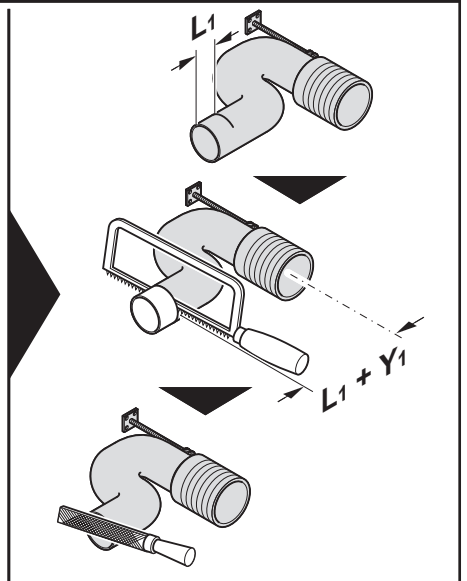
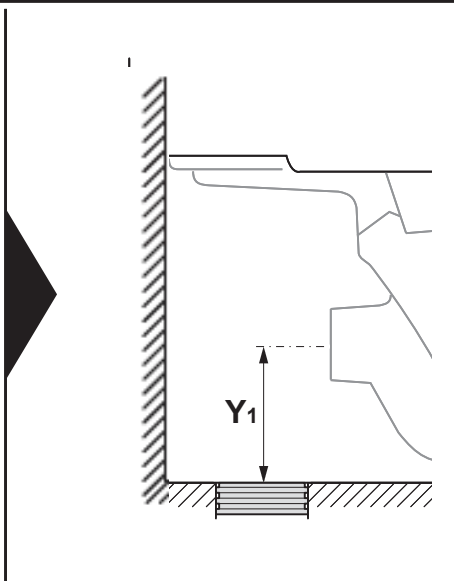
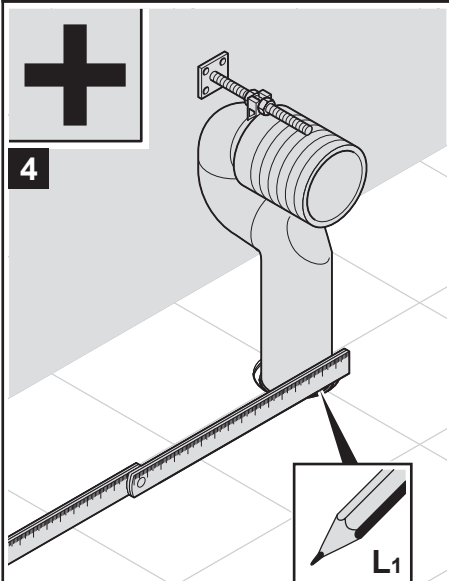
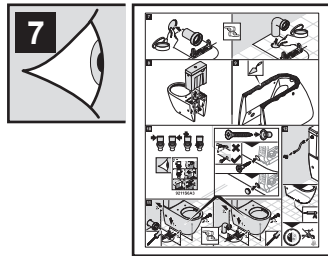


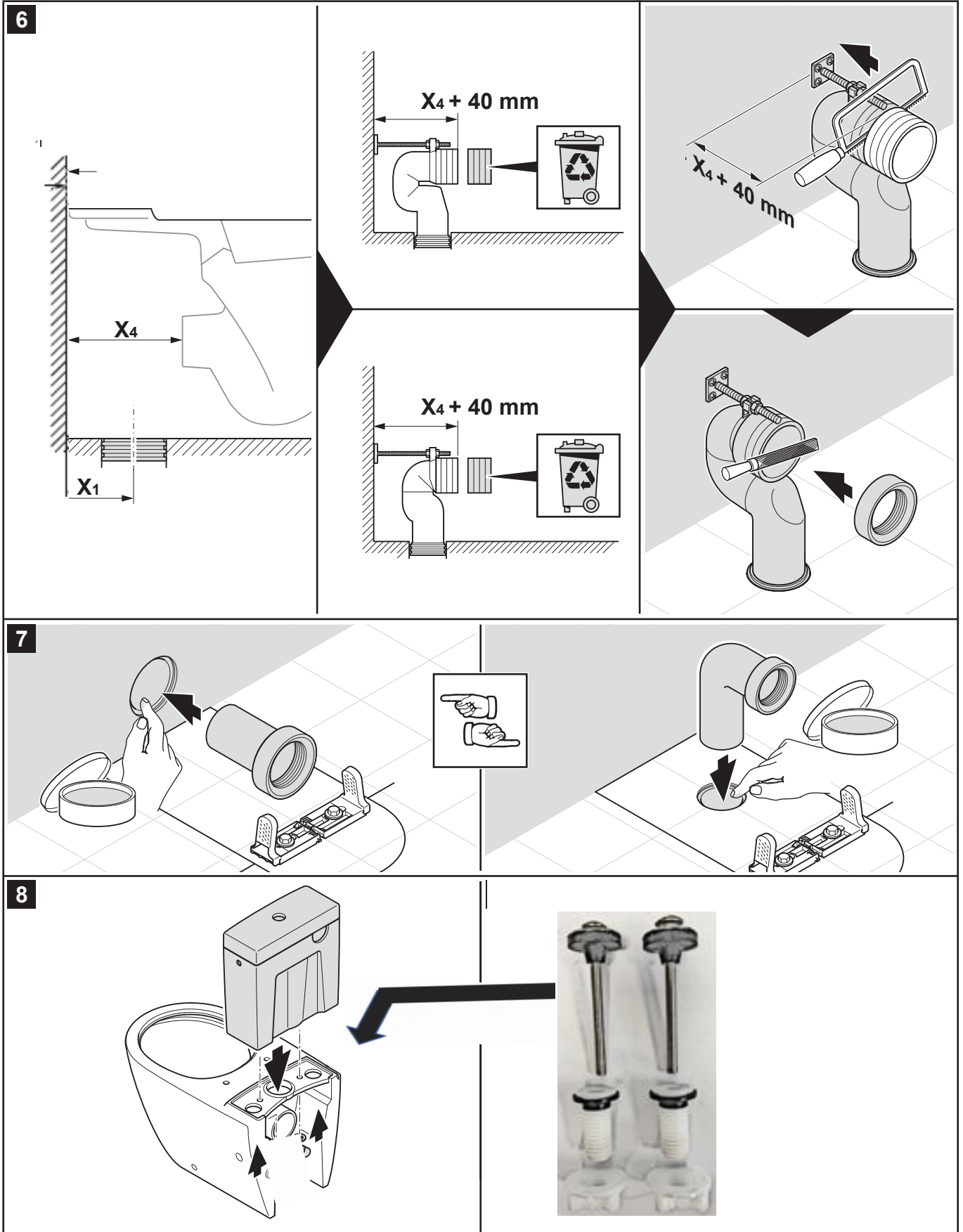
***Important***

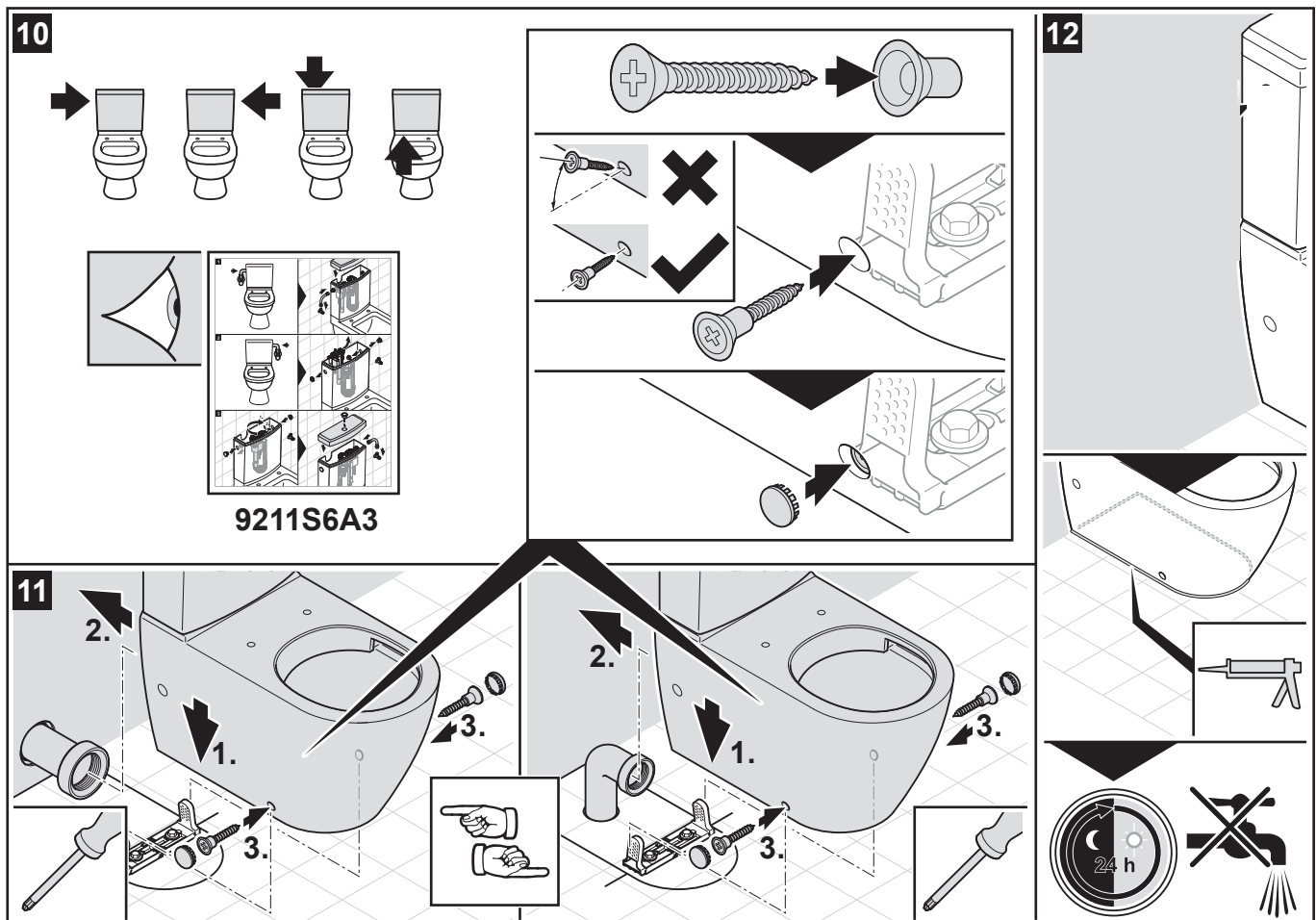
WELS and Watermark regulations are applicable to all WC toilets and flushing systems sold in the Australian market.







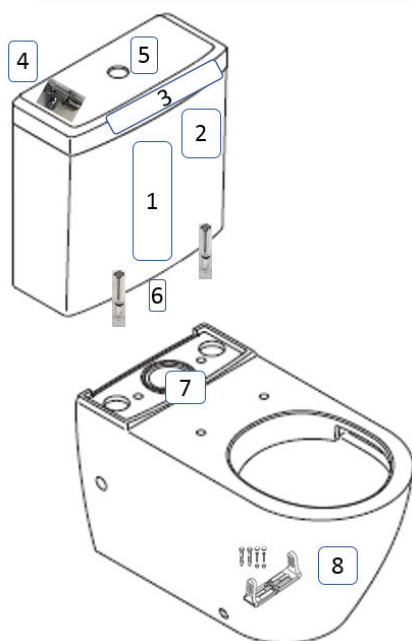




## Care and Maintenance

- With daily care, your Villeroy & Boch products will shine for many years to come.
- For the daily cleaning, we recommend using a soft, non-abrasive sponge or cloth. If you wish to use a cleaning agent, it is best to use a standard, general-purpose cleaning agent.
- You can use all standard cleaning agents.
- Villeroy & Boch products are resistant to all acids and alkalis typically used in the home (as well as cosmetic and medical products containing solvents, alcohol and acetone).
- Please do not use any aggressive cleaning agents that are harmful to the environment.
- As on all surfaces, Villeroy & Boch products will also be damaged by the regular use of scouring creams and powders, highly concentrated drain cleaning chemicals, special tap/metal cleaning agents or bleaching agents containing chlorine.
- Microfibre cloths are suitable for Villeroy & Boch ceramics.
- Tip: Dampen microfibre cloths before use.

## 5 Spare Parts



Pos	Description	Article Number
1	Outlet Valve Optima (O. novo & Architectura)	8L18 6000
1a	Outlet Valve Type290 (Subway & Venticello)	272.400.21.1
2	Inlet Valve Unifil (O. novo & Architectura)	261.467.001
2a	Inlet Valve - Bottom Inlet (O. novo)	222.100.00.1
2b	Inlet Valve Unifil with Flex (Subway & Venticello)	821.066.00.1
3a	300mm Flex Hose ½ x 3/8 (O.novo & Architectura)	9223 2100
4	Cistern Tap ½ x ½ Right Angle	9223 2300
5a	Dual Flush Button Chr (O.novo & Architectura)	8L18 9861
5b	Dual Flush Button White (O.novo & Architectura)	8L18 9868
5c	Dual Flush Button Chr (Subway & Venticello)	8L28 9861
5d	Dual Flush Button White (Subway & Venticello)	8L28 9868
6	Top Fixing Cistern to Pan fasteners	9221 4600
7	Pan to Cistern foam seal	7777 12
8	Pan to Floor Fixing Kit (O.novo & Venticello)	9222 3600
8a	Pan to Floor Fixing Kit (Architectura & Subway 2.0)	9224 8701

## VILLEROY & BOCH

### AUSTRALIA

Argent Australia Pty Ltd  
Level 1, 22 Arthur Street  
Fortitude Valley QLD 4006  
Australia

Customer Central: +61 1300 364 748  
Technical Hotline: +61 1800 356 717  
Email: [support@customer-central.com.au](mailto:support@customer-central.com.au)  
Homepage: <https://www.argentaust.com.au/>

### GERMANY

Villeroy & Boch AG  
Bathroom and Wellness Division  
Headquarters  
66693 Mettlach  
Germany

Tel: +49 (0) 68 64 / 81 0  
Fax: +49 (0) 68 64 / 81 1484