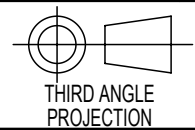


Sheet1 (Default)



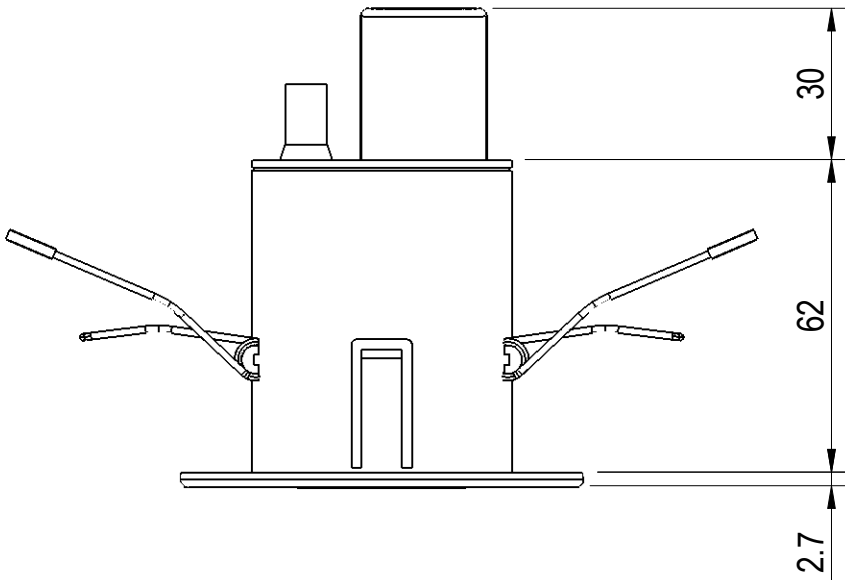
Dimensions in
millimetres

Drawing to
BS8888:2004

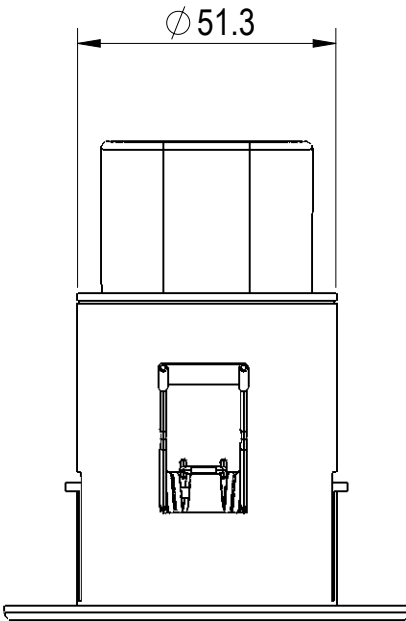
Screw threads to
BS 8498:2008

Zip Industries Pty Ltd
67 Allingham Street
Condell Park
Sydney
NSW 2200
Australia

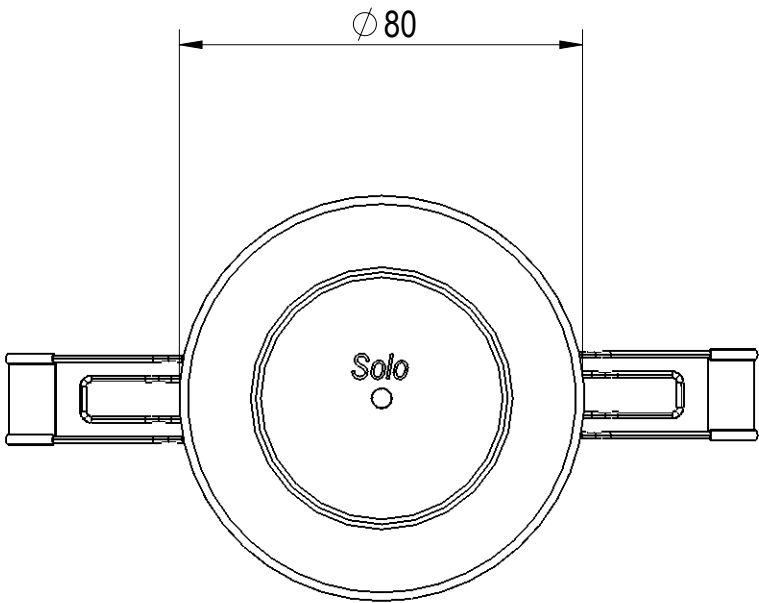
Web : www.zipindustries.com
Email : sales@zipindustries.com



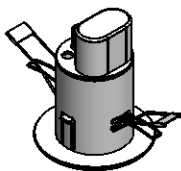
FRONT VIEW
SCALE 1 : 1.5



SIDE VIEW
SCALE 1 : 1.5



BOTTOM VIEW
SCALE 1 : 1.5



Isometric View
Configuration : Default
Scale : 1:5

This drawing is CONFIDENTIAL and is supplied on the express condition that it shall not be LOANED, COPIED or DISCLOSED to any other third party or used for any purpose without the written consent of Zip Industries Pty Ltd. If this document is printed in hardcopy form, it is for INFORMATION ONLY and therefore not subject to updating controls.
For the current revision ALWAYS refer to the NATIVE electronic form as stated in the top left-hand corner of this sheet.
© copyright Zip Industries Pty Ltd, 25/06/2013

Zip Industries **Zip**

Manufacturing Instructions			Approved by : Unapproved on 1/01/2001		Description : Zip FlushMaster Pearl Solo WS005 Ceiling Compact Sensor Narrow Beam					
Make or Buy : Assemble			Checked by : Unchecked on 1/01/2001							
Manufacturing Route : See Components			Updated by : edgarg on 25/06/2013 5:50:39 PM							
Raw material : See Components			Material : See Components		Project : Washroom Products®		Configuration : Default			
Remove all sharp edges. This drawing ONLY details information which cannot be ascertained from the 3D geometry of the part(s) attached. Model & dimensions are AFTER all finishing operations Comments :			See Components		Model : 42214		Created by & on EdgarG on 25/06/2013			
					Drawing : 42214		Created by & on Engineer on 25/06/2013		Rev 00	
							Size A3			
Volume (cm3) : 61.6			Area (cm2) : 371.2		Derived from : New			Colour : Colour		
Potable? No	Recyclable? Yes	Handed? No	Mass (g) : 85.6	Density (g/cm3) : 1.4	Scale : 1:1	Sheet : 1 of 1		Status : Design		