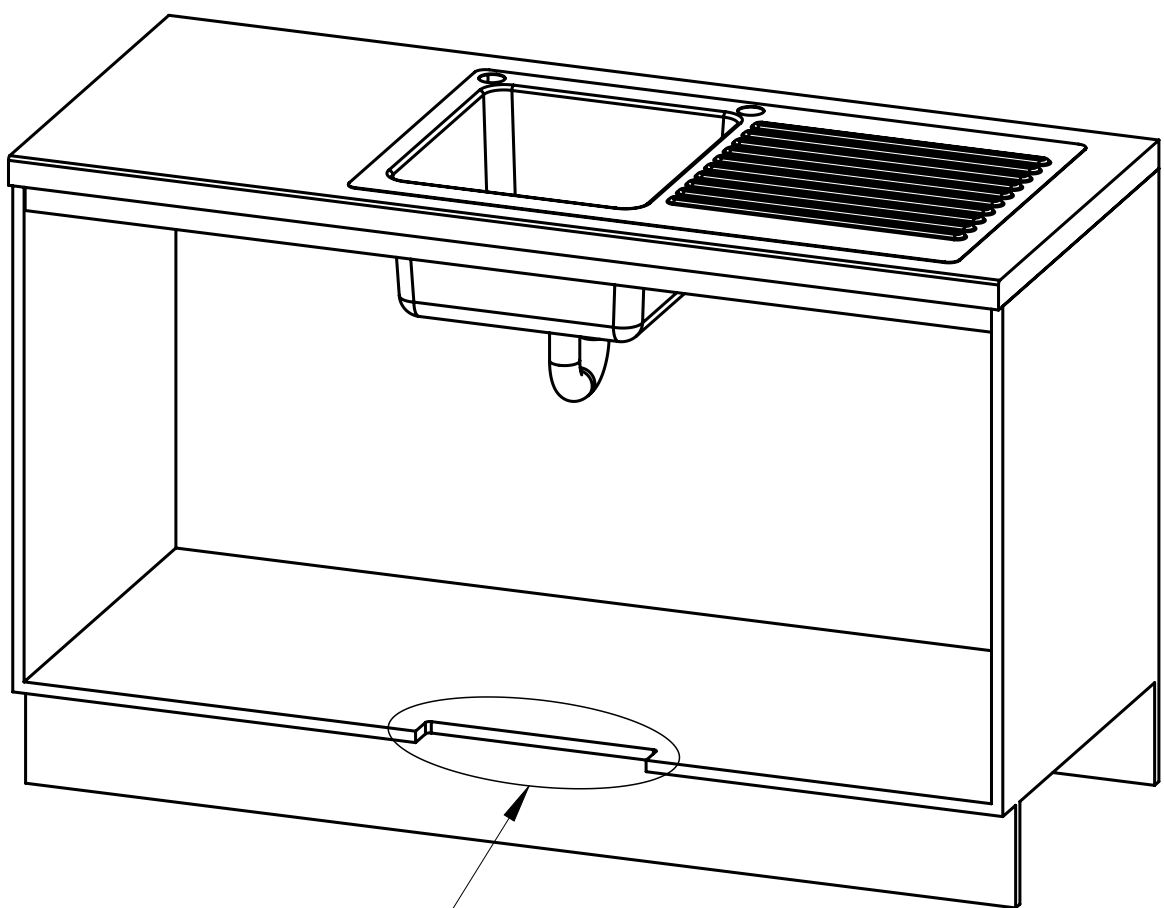


Table - Zip BOM (Assembly + Make/Buy)						
Item	Part	Rev	Description	Status	Qty	Make or Buy?
5	800221	C	Air Inlet Grill CFF	Production	1	Make
6	83393	A	Ventilation Grille Hafele	Production	1	Buy
7	802433	00	HydroTap Arc Tap	Design	1	Buy
10	1214AU	01	HydroTap G4 Residential BC Base Module	Prototype	1	Buy

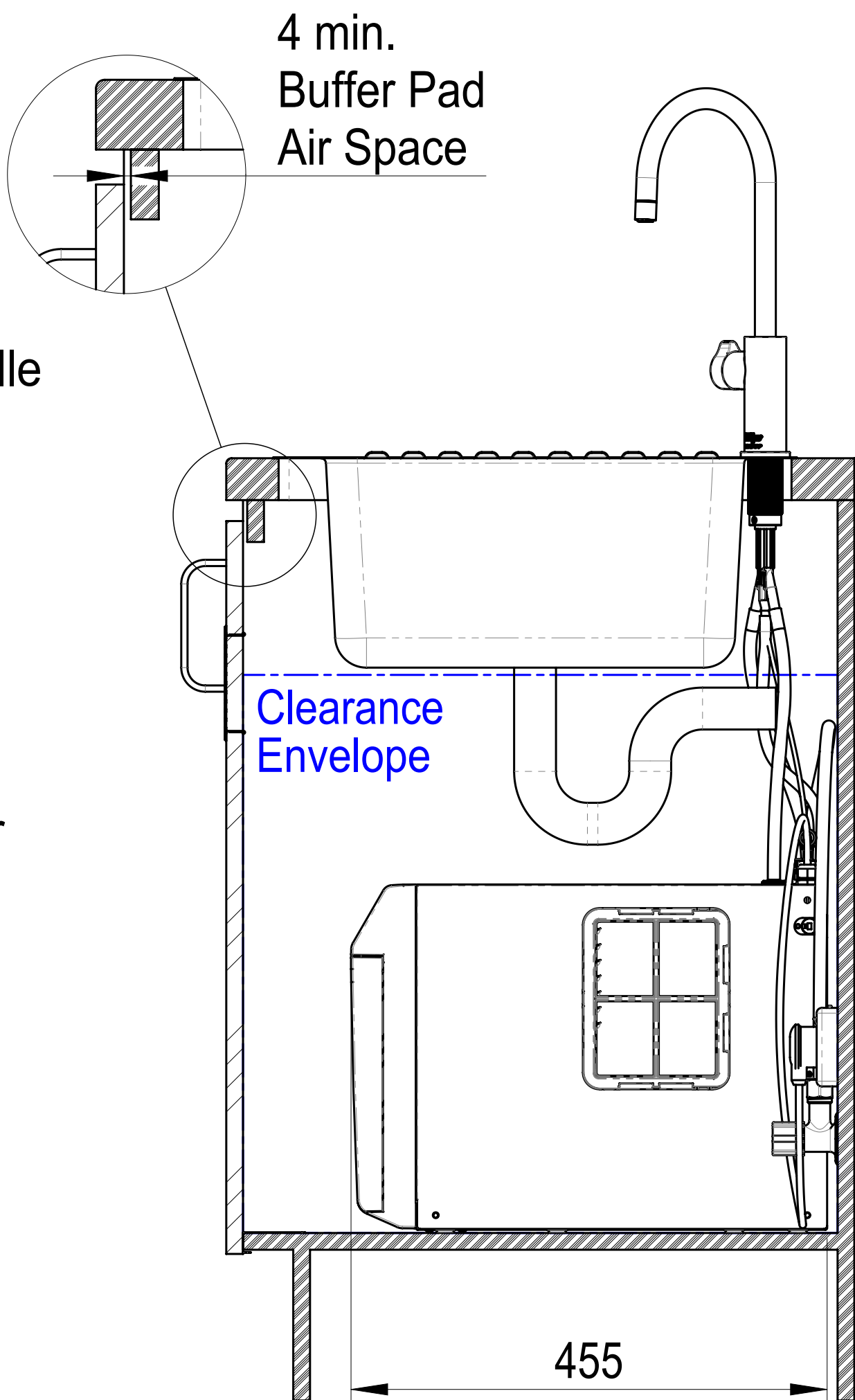
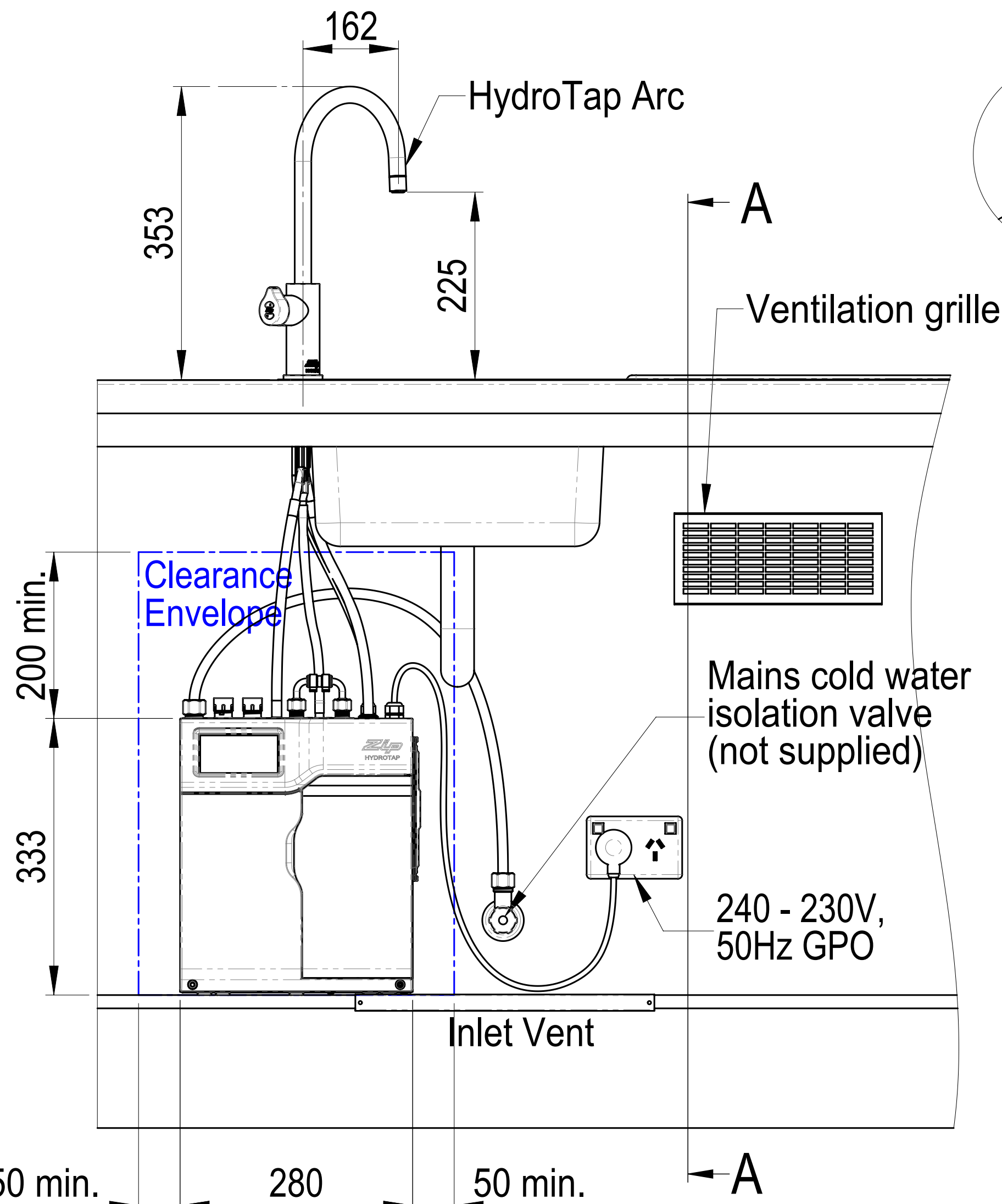


See Detail B
Ventilation Detail

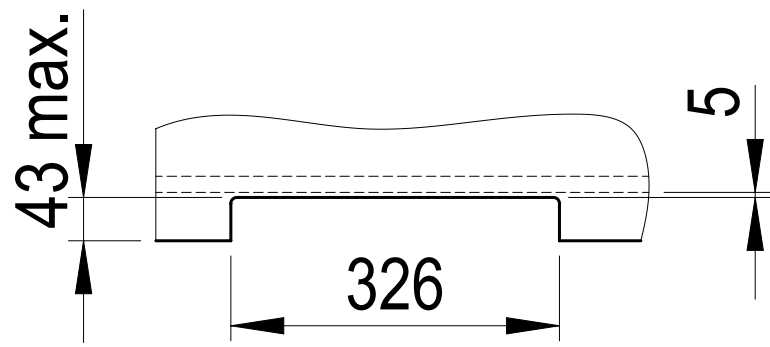
Position the Tap such that it dispenses into the sink bowl with ample clearance for a cup or a tea pot. Alternatively, the Tap could be mounted away from the sink using a Zip Font available as an accessory.

Sink shown only

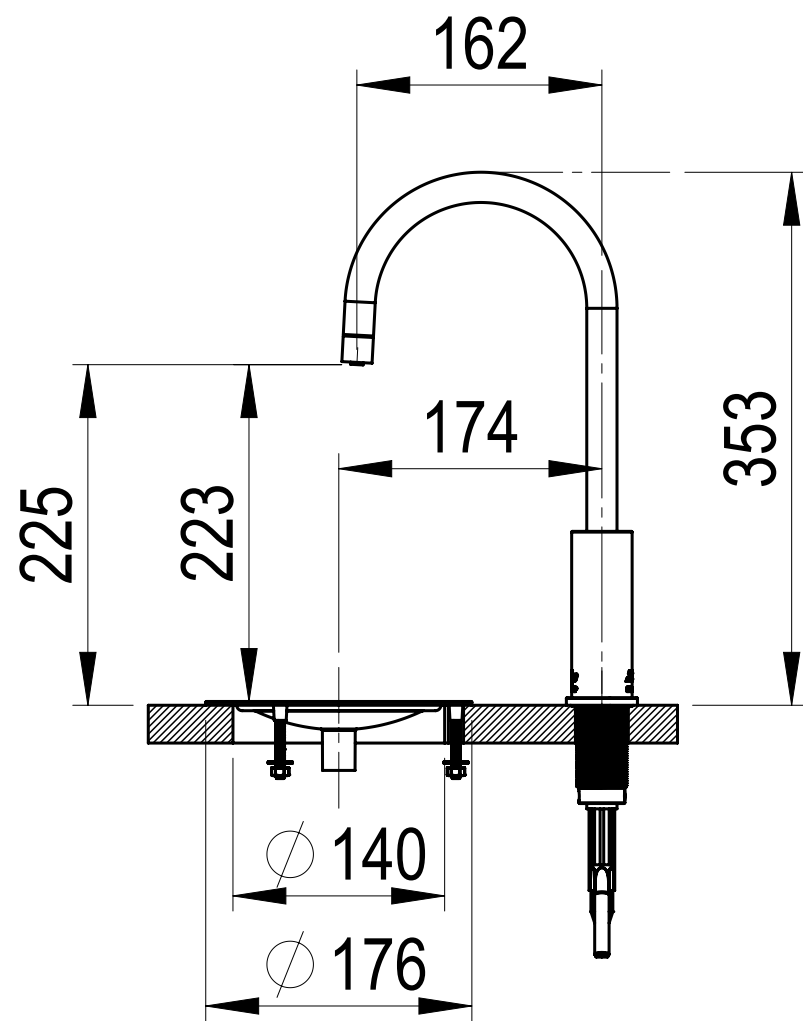
Ø 35 Hole for HydroTap Arc, HydroTap Cube or Elite Taps



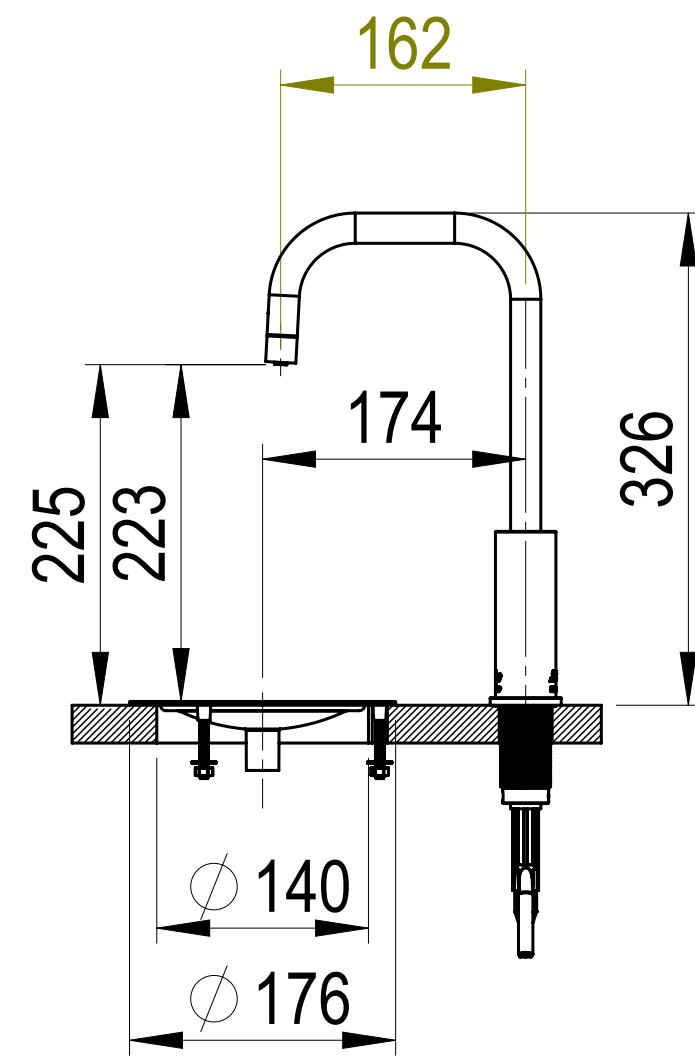
SECTION A-A
SCALE 1 : 5



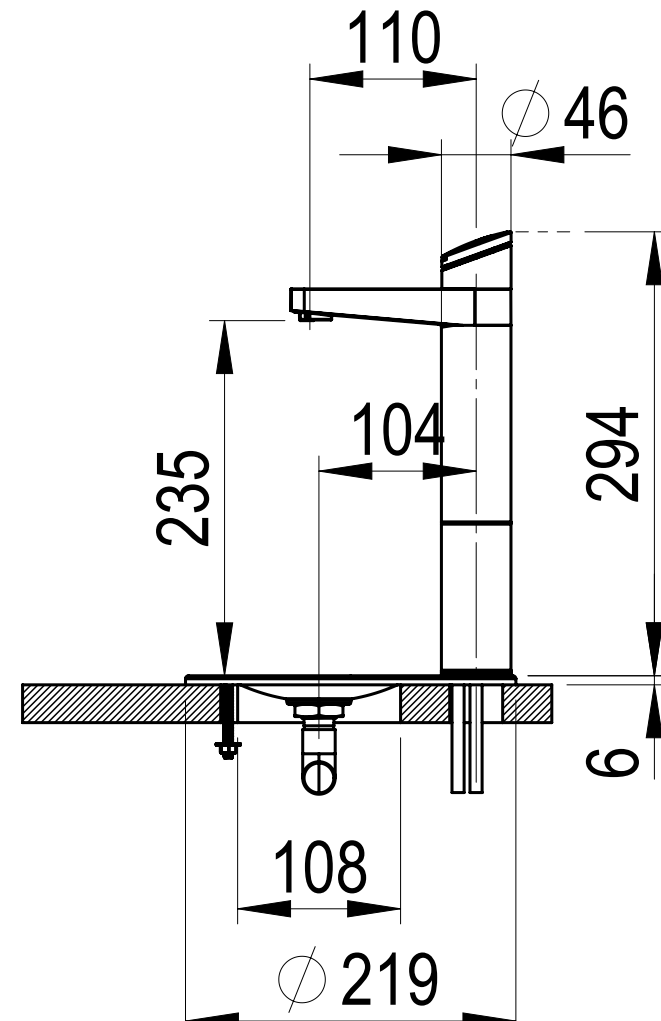
DETAIL B: Cabinet Floor Cut-Out
SCALE 1 : 7.5



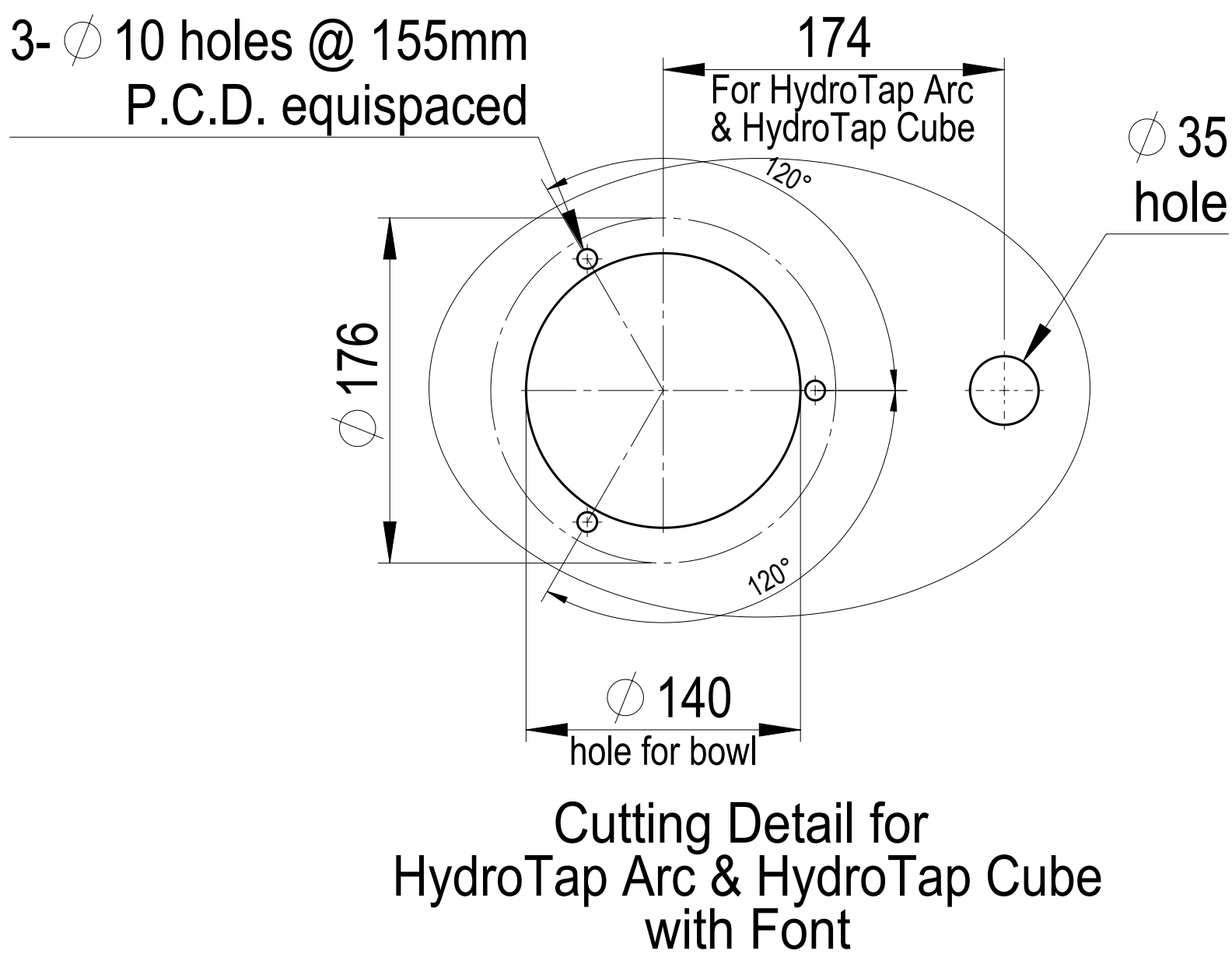
HydroTap Arc with Font



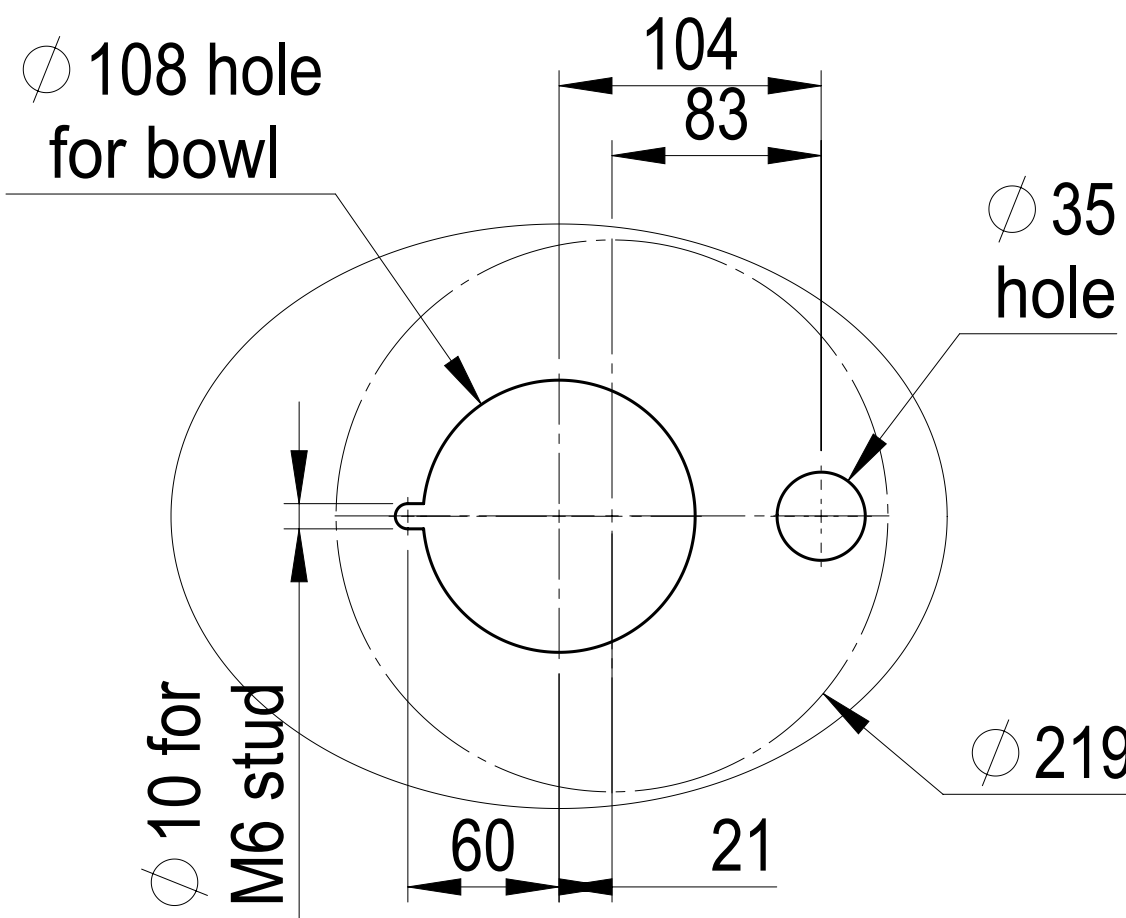
HydroTap Cube with Font



Elite Tap with Font

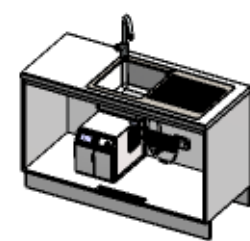


Cutting Detail for
HydroTap Arc & HydroTap Cube
with Font



Cutting Detail for
Elite Tap with Font

This set-up is applicable to:
BC Residential:
HT2784: 1214AU0T0ZN1R w/ HydroTap Arc Tap
HT3784: 1214AU0U0ZN1R w/ HydroTap Cube Tap
HT4784: 1214AU0E0ZN1R w/ Elite Tap



Configuration : Default

This drawing is CONFIDENTIAL and is supplied on the express condition that it will not be LOANED, COPIED or DISCLOSED to any other third party or used for any purpose without the written consent of Zip Industries Pty Ltd. This document is printed in hardcopy form. It is for INFORMATION ONLY and therefore not subject to copyright controls. For the current revision ALWAYS refer to the MATING electronic form as stated in the top left hand corner of this sheet. © copyright Zip Industries Pty Ltd. 16/05/2011				Zip Industries Zip			
Make or Buy: Buy		Approved by: nicks on 11/11/2014		Description: Assy - Kitchen Layout (HydroTap G4 Residential BC & HydroTap Arc, Cube & Elite Taps)		Rev: 01	
Manufacturing Route: Manufacturing Process		Updated by: edgar on 11/02/2015 8:16:23 AM		Project: HydroTap G4R		Created by & on: Edgarg on 4/05/2011	
Raw material: See Components		Material: See Components		Model: KL002_1214AU0T0ZN1R		Configuration: Default	
Remove all sharp edges. This drawing ONLY details information which cannot be ascertained from the 3D geometry of the part(s) attached. Model & dimensions are AFTER all finishing operations.		Finish: Finish		Drawing: KL002_1214AU0T0ZN1R		Size: A1	
Comments:		Volume (mm³): 75870.7		Area (mm²): 12485.5		Derived from: New	
Watermark Exp: 26-10-2017, CS Exp: 18-8-2014		Mass (g): 84104.8		Density (g/mm³): 1.1		Scale: 1:1	
Position: NO		Recyclable: NO		Handled: NO		Sheet: 1 of 1	
						Status: Prototype	
						Config: Property	
						Custom: Property	