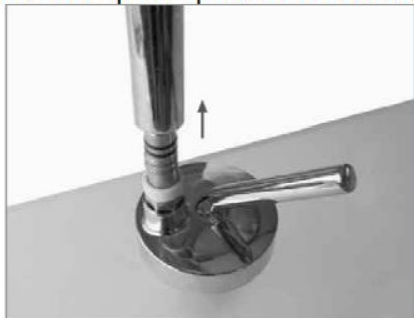


1. Pull the spout upwards to remove it.



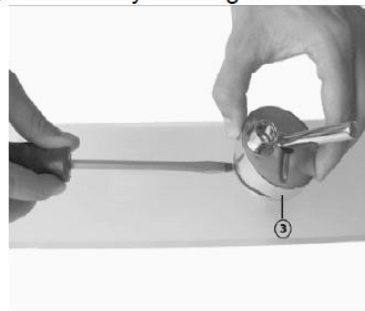
2. Loosen the nut (1) completely using a 14mm spanner.



3. Unscrew the joint (2) using an 8mm Allen key until it is removed from the base.



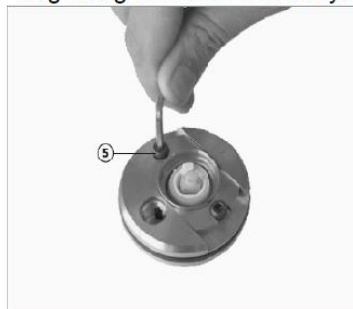
4. Remove the baseplate (3) from the body of the tap, if necessary levering on the surface.



5. Remove the handle (4) by pulling it up.



6. Loosen the two screws (5) on the locking ring using a 2.5mm Allen key.



7. Fit the new cartridge and secure the locking plate back on.

8. Then using the key as shown below, turn it fully anticlockwise and then clockwise until tight.

